

City of San Diego

CITY CONTACT: Brittany Friedenreich, Senior Contract Specialist, Email: BFriedenreic@saniego.gov
Phone No. (619) 533-3104

ADDENDUM A



FOR

HOWARD AVE - VILLAGE PINE TO IRIS SIDEWALK

BID NO.:	<u>K-22-2050-DBB-2</u>
SAP NO. (WBS/IO/CC):	<u>B-18019</u>
CLIENT DEPARTMENT:	<u>2116</u>
COUNCIL DISTRICT:	<u>8</u>
PROJECT TYPE:	<u>IK, IJ, II</u>
CDBG NO.:	<u>1000003-2021</u>

BID DUE DATE:

2:00 PM
April 5, 2022

CITY OF SAN DIEGO'S ELECTRONIC BIDDING SITE, PLANETBIDS

<http://www.sandiego.gov/cip/bidopps/index.shtml>

ENGINEER OF WORK

The Engineering Specifications and Special Provisions contained herein have been prepared by or under the direction of the following Registered Engineer:



City Engineer

3/23/2022
Date

Seal:



A. CHANGES TO CONTRACT DOCUMENTS

The following changes to the Contract Documents are hereby made effective as though originally issued with the bid package. Bidders are reminded that all previous requirements to this solicitation remain in full force and effect.

B. BIDDER'S QUESTIONS

Q1. On the Traffic Signal Modification Plans, note 4 says to protect existing conduit and install new conductors, but there is also a tag "AB" on all of the conduit that typically means "abandon if applied to conduit, remove conductors." Are we meant to protect in place and rewire through the existing conduit or are we meant to replace with new conduit?

A1. The intent is to have the existing conduit protected in place and re-wire through the existing conduit.

C. NOTICE INVITING BIDS

1. To Section 7, SUBCONTRACTING PARTICIPATION PERCENTAGES, page 8 Sub-Item **7.5. Federal Emergency Management Agency, DHS (FEMA), Department of Interior (DOI), Department of Energy (DOE), and Department of Housing and Urban Development (HUD);** to **7.5.1. and 7.5.2, DELETE** in their entirety and **SUBSTITUTE** with the following:

7.5.1. Submission of GFE documentation, as specified in Attachment D – CDBG/HUD Funding Agency Provisions Section 14.

7.5.2. Submit Good Faith Effort (GFE) documentation, saved in searchable Portable Document Format (PDF), demonstrating the Bidder made a good faith effort to conduct outreach to and include DBE Subcontractors as required in this solicitation by 5 PM 4 Working Days of the Bid opening.

All submittals in searchable PDF shall be submitted electronically within the prescribed time identified in the contract documents via PlanetBids by invitation to the point of contact named in the bid provided by the Contract Specialist to all bidders.

D. ATTACHMENTS

1. To Attachment C, Equal Opportunity Contracting Program (EOCP), SECTION B – SLBE-ELBE SUBCONTRACTING REQUIREMENTS, pages 37 through 45, **DELETE** in its entirety and **SUBSTITUTE** with the following:

EQUAL OPPORTUNITY CONTRACTING PROGRAM (EOCP)
SECTION B - SLBE-ELBE SUBCONTRACTING REQUIREMENTS

RESERVED

2. To Attachment D, Item 9, Wage Rates, pages 60 through 88, **DELETE** in their entirety and **SUBSTITUTE** with pages 5 through 39 of this Addendum.

E. SUPPLEMENTARY SPECIAL PROVISIONS

1. To Attachment E, Supplemental Special Provisions Appendices. Pages 188 through 193, **APPENDIX L, CALTRANS ENCROACHMENT PERMIT DELETE** in their entirety and **SUBSTITUTE** with Pages 40 through 69 of this Addendum.

Rania Amen, Director
Engineering & Capital Projects Department

Dated: *April 1, 2022*
San Diego, California

RA/DH/la

9. WAGE RATES This contract shall be subject to the following Davis-Bacon Wage Decisions:

"General Decision Number: CA20220001 04/01/2022

Superseded General Decision Number: CA20210001

State: California

Construction Types: Building, Heavy (Heavy and Dredging),
Highway and Residential

County: San Diego County in California.

BUILDING CONSTRUCTION PROJECTS; DREDGING PROJECTS (does not include hopper dredge work); HEAVY CONSTRUCTION PROJECTS (does not include water well drilling); HIGHWAY CONSTRUCTION PROJECTS; RESIDENTIAL CONSTRUCTION PROJECTS (consisting of single family homes and apartments up to and including 4 stories)

Note: Contracts subject to the Davis-Bacon Act are generally required to pay at least the applicable minimum wage rate required under Executive Order 14026 or Executive Order 13658.

Please note that these Executive Orders apply to covered contracts entered into by the federal government that are subject to the Davis-Bacon Act itself, but do not apply to contracts subject only to the Davis-Bacon Related Acts, including those set forth at 29 CFR 5.1(a)(2)-(60).

If the contract is entered into on or after January 30, 2022, or the contract is renewed or extended (e.g., an option is exercised) on or after January 30, 2022:	. Executive Order 14026 generally applies to the contract. . The contractor must pay all covered workers at least \$15.00 per hour (or the applicable wage rate listed on this wage determination, if it is higher) for all hours spent performing on the contract in 2022.
If the contract was awarded on or between January 1, 2015 and January 29, 2022, and the	. Executive Order 13658 generally applies to the contract.

contract is not renewed or extended on or after January 30, 2022:	. The contractor must pay all covered workers at least \$11.25 per hour (or the applicable wage rate listed on this wage determination, if it is higher) for all hours spent performing on that contract in 2022.
---	---

The applicable Executive Order minimum wage rate will be adjusted annually. If this contract is covered by one of the Executive Orders and a classification considered necessary for performance of work on the contract does not appear on this wage determination, the contractor must still submit a conformance request.

Additional information on contractor requirements and worker protections under the Executive Orders is available at <https://www.dol.gov/agencies/whd/government-contracts>.

Modification Number	Publication Date
0	01/07/2022
1	01/14/2022
2	01/21/2022
3	02/11/2022
4	02/25/2022
5	04/01/2022

ASBE0005-002 09/01/2021

	Rates	Fringes
Asbestos Workers/Insulator (Includes the application of all insulating materials, protective coverings, coatings, and finishes to all types of mechanical systems).....	\$ 47.25	24.45
Fire Stop Technician (Application of Firestopping Materials for wall openings and penetrations in walls, floors, ceilings and curtain walls).....	\$ 32.09	19.66

ASBE0005-004 07/05/2021

	Rates	Fringes
Asbestos Removal worker/hazardous material handler (Includes preparation, wetting, stripping, removal, scrapping, vacuuming, bagging and disposing of all insulation materials from mechanical systems, whether they contain asbestos or not)....	\$ 22.40	13.07

BOIL0092-003 01/01/2021

	Rates	Fringes
BOILERMAKER.....	\$ 46.03	38.81

BRCA0004-008 05/01/2021

	Rates	Fringes
BRICKLAYER; MARBLE SETTER.....	\$ 40.94	18.71

BRCA0018-004 06/01/2021

	Rates	Fringes
--	-------	---------

MARBLE FINISHER.....	\$ 35.90	14.11
TILE FINISHER.....	\$ 30.47	12.52
TILE LAYER.....	\$ 43.09	18.31

BRCA0018-010 09/01/2020

	Rates	Fringes
TERRAZZO FINISHER.....	\$ 33.66	14.20
TERRAZZO WORKER/SETTER.....	\$ 41.60	14.73

CARP0213-003 07/01/2021

	Rates	Fringes
Drywall		
(1) Work on wood framed construction of single family residences, apartments or condominiums under four stories		
Drywall Installer/Lather....	\$ 32.14	16.28
Drywall Stocker/Scraper....	\$ 22.16	8.62

CARP0619-002 07/01/2021

	Rates	Fringes
Drywall		
(2) All other work		
Drywall Installer/Lather....	\$ 42.80	16.28
Drywall Stocker/Scraper....	\$ 23.07	8.62

CARP0619-003 07/01/2021

	Rates	Fringes
CARPENTER		
(1) Bridge.....	\$ 51.53	16.28
(2) Commercial Building....	\$ 46.30	16.28
(3) Heavy & Highway.....	\$ 51.40	16.28
(4) Residential Carpenter..	\$ 38.47	16.28
(5) Residential		
Insulation Installer.....	\$ 24.16	15.76
PILEDRIVERMAN.....	\$ 51.53	16.28

CARP0619-004 07/01/2021

	Rates	Fringes
Diver		
(1) Wet.....	\$ 831.20	16.28
(2) Standby.....	\$ 444.24	16.28
(3) Tender.....	\$ 436.24	16.28
(4) Assistant Tender.....	\$ 412.24	16.28

Amounts in "'Rates' column are per day

CARP0721-001 07/01/2021

	Rates	Fringes
Modular Furniture Installer.....	\$ 21.85	7.15

CARP1607-004 07/01/2021

	Rates	Fringes
MILLWRIGHT.....	\$ 51.90	16.48

ELEC0569-001 06/01/2021

	Rates	Fringes
Electricians (Tunnel Work)		
Cable Splicer.....	\$ 54.36	3%+14.88
Electrician.....	\$ 53.61	3%+14.88
Electricians: (All Other Work, Including 4 Stories Residential)		
Cable Splicer.....	\$ 48.40	3%+14.88
Electrician.....	\$ 47.65	3%+14.88

ELEC0569-004 06/01/2021

	Rates	Fringes
ELECTRICIAN (Sound & Communications Sound Technician).....	\$ 35.20	13.84
SCOPE OF WORK Assembly, installation, operation, service and maintenance of components or systems as used in closed circuit television, amplified master television distribution, CATV on		

private property, intercommunication, burglar alarm, fire alarm, life support and all security alarms, private and public telephone and related telephone interconnect, public address, paging, audio, language, electronic, background music system less than line voltage or any system acceptable for class two wiring for private, commercial, or industrial use furnished by leased wire, frequency modulation or other recording devices, electrical apparatus by means of which electricity is applied to the amplification, transmission, transference, recording or reproduction of voice, music, sound, impulses and video. Excluded from this Scope of Work - transmission, service and maintenance of background music. All of the above shall include the installation and transmission over fiber optics.

ELEC0569-005 06/01/2021

	Rates	Fringes
Sound & Communications		
Sound Technician.....	\$ 35.20	13.84
SCOPE OF WORK Assembly, installation, operation, service and maintenance of components or systems as used in closed circuit television, amplified master television distribution, CATV on private property, intercommunication, burglar alarm, fire alarm, life support and all security alarms, private and public telephone and related telephone interconnect, public address, paging, audio, language, electronic, background music system less than line voltage or any system acceptable for class two wiring for private, commercial, or industrial use furnished by leased wire, frequency modulation or other recording devices, electrical apparatus by means of which electricity is applied to the amplification, transmission, transference, recording or reproduction of voice, music, sound, impulses and video. Excluded from this Scope of Work - transmission, service and maintenance of background music. All of the above shall include the installation and transmission over fiber optics.		
SOUND TECHNICIAN: Terminating, operating and performing final check-out		

ELEC0569-006 02/22/2021

Work on street lighting; traffic signals; and underground systems and/or established easements outside of buildings

	Rates	Fringes
Traffic signal, street light and underground work		
Utility Technician #1.....	\$ 35.17	9.01
Utility Technician #2.....	\$ 28.60	8.80

STREET LIGHT & TRAFFIC SIGNAL WORK:

UTILITY TECHNICIAN #1: Installation of street lights and traffic signals, including electrical circuitry, programmable controller, pedestal-mounted electrical meter enclosures and laying of pre-assembled cable in ducts. The layout of electrical systems and communication installation including proper position of trench depths, and radius at duct banks, location for manholes, street lights and traffic signals.

UTILITY TECHNICIAN #2: Distribution of material at jobsite, installation of underground ducts for electrical, telephone, cable TV and communication systems. The setting, leveling, grounding and racking of precast manholes, handholes and transformer pads.

ELEC0569-008 08/30/2021

	Rates	Fringes
ELECTRICIAN (Residential, 1-3 Stories).....	\$ 37.28	7.98

ELEC1245-001 01/01/2022

	Rates	Fringes
LINE CONSTRUCTION		
(1) Lineman; Cable splicer..	\$ 60.19	22.07
(2) Equipment specialist (operates crawler tractors, commercial motor vehicles, backhoes, trenchers, cranes (50 tons and below), overhead & underground distribution line equipment).....	\$ 48.08	20.86

(3) Groundman.....	\$ 36.76	20.46
(4) Powderman.....	\$ 51.87	18.79

HOLIDAYS: New Year's Day, M.L. King Day, Memorial Day,
Independence Day, Labor Day, Veterans Day, Thanksgiving Day
and day after Thanksgiving, Christmas Day

ELEV0018-001 01/01/2022

	Rates	Fringes
ELEVATOR MECHANIC.....	\$ 61.34	36.885+a+b

FOOTNOTE:

- a. PAID VACATION: Employer contributes 8% of regular hourly rate as vacation pay credit for employees with more than 5 years of service, and 6% for 6 months to 5 years of service.
 - b. PAID HOLIDAYS: New Year's Day, Memorial Day, Independence Day, Labor Day, Veterans' Day, Thanksgiving Day, Friday after Thanksgiving, and Christmas Day.
-

ENGI0012-003 07/01/2020

	Rates	Fringes
OPERATOR: Power Equipment		
(All Other Work)		
GROUP 1.....	\$ 48.25	27.20
GROUP 2.....	\$ 49.03	27.20
GROUP 3.....	\$ 49.32	27.20
GROUP 4.....	\$ 50.81	27.20
GROUP 5.....	\$ 48.96	25.25
GROUP 6.....	\$ 51.03	27.20
GROUP 8.....	\$ 51.14	27.20
GROUP 9.....	\$ 49.29	25.25
GROUP 10.....	\$ 51.26	27.20
GROUP 11.....	\$ 49.41	25.25
GROUP 12.....	\$ 51.43	27.20
GROUP 13.....	\$ 51.53	27.20
GROUP 14.....	\$ 51.56	27.20
GROUP 15.....	\$ 51.64	27.20
GROUP 16.....	\$ 51.76	27.20
GROUP 17.....	\$ 51.93	27.20
GROUP 18.....	\$ 52.03	27.20

GROUP 19.....	\$ 52.14	27.20
GROUP 20.....	\$ 52.26	27.20
GROUP 21.....	\$ 52.43	27.20
GROUP 22.....	\$ 52.53	27.20
GROUP 23.....	\$ 52.64	27.20
GROUP 24.....	\$ 52.76	27.20
GROUP 25.....	\$ 52.93	27.20
OPERATOR: Power Equipment (Cranes, Piledriving & Hoisting)		
GROUP 1.....	\$ 49.60	27.20
GROUP 2.....	\$ 50.38	27.20
GROUP 3.....	\$ 50.67	27.20
GROUP 4.....	\$ 50.81	27.20
GROUP 5.....	\$ 51.03	27.20
GROUP 6.....	\$ 51.14	27.20
GROUP 7.....	\$ 51.26	27.20
GROUP 8.....	\$ 51.43	27.20
GROUP 9.....	\$ 51.60	27.20
GROUP 10.....	\$ 52.60	27.20
GROUP 11.....	\$ 53.60	27.20
GROUP 12.....	\$ 54.60	27.20
GROUP 13.....	\$ 55.60	27.20
OPERATOR: Power Equipment (Tunnel Work)		
GROUP 1.....	\$ 50.10	27.20
GROUP 2.....	\$ 50.88	27.20
GROUP 3.....	\$ 51.17	27.20
GROUP 4.....	\$ 51.31	27.20
	Rates	Fringes
GROUP 5.....	\$ 51.53	27.20
GROUP 6.....	\$ 51.64	27.20
GROUP 7.....	\$ 51.76	27.20

PREMIUM PAY:

\$3.75 per hour shall be paid on all Power Equipment Operator work on the following Military Bases: China Lake Naval Reserve, Vandenberg AFB, Point Arguello, Seely Naval Base, Fort Irwin, Nebo Annex Marine Base, Marine Corp Logistics Base Yermo, Edwards AFB, 29 Palms Marine Base and Camp Pendleton

Workers required to suit up and work in a hazardous material environment: \$2.00 per hour additional. Combination mixer and compressor operator on gunite work shall be classified as a concrete mobile mixer operator.

SEE ZONE DEFINITIONS AFTER CLASSIFICATIONS

POWER EQUIPMENT OPERATORS CLASSIFICATIONS

GROUP 1: Bargeman; Brakeman; Compressor operator; Ditch Witch, with seat or similar type equipment; Elevator operator-inside; Engineer Oiler; Forklift operator (includes loed, lull or similar types under 5 tons; Generator operator; Generator, pump or compressor plant operator; Pump operator; Signalman; Switchman

GROUP 2: Asphalt-rubber plant operator (nurse tank operator); Concrete mixer operator-skip type; Conveyor operator; Fireman; Forklift operator (includes loed, lull or similar types over 5 tons; Hydrostatic pump operator; oiler crusher (asphalt or concrete plant); Petromat laydown machine; PJU side dum jack; Screening and conveyor machine operator (or similar types); Skiploader (wheel type up to 3/4 yd. without attachment); Tar pot fireman; Temporary heating plant operator; Trenching machine oiler

GROUP 3: Asphalt-rubber blend operator; Bobcat or similar type (Skid steer); Equipment greaser (rack); Ford Ferguson (with dragtype attachments); Helicopter radioman (ground); Stationary pipe wrapping and cleaning machine operator

GROUP 4: Asphalt plant fireman; Backhoe operator (mini-max or similar type); Boring machine operator; Boxman or mixerman (asphalt or concrete); Chip spreading machine operator; Concrete cleaning decontamination machine operator; Concrete Pump Operator (small portable); Drilling machine operator, small auger types (Texoma super economatic or similar types - Hughes 100 or 200 or similar types - drilling depth of 30' maximum); Equipment greaser (grease truck); Guard rail post driver operator; Highline cableway signalman; Hydra-hammer-aero stomper; Micro Tunneling (above ground tunnel); Power concrete curing machine operator; Power concrete saw operator; Power-driven jumbo form setter operator; Power sweeper operator; Rock Wheel Saw/Trencher; Roller operator (compacting); Screed operator (asphalt or concrete); Trenching machine operator (up to 6 ft.); Vacuum or much truck

GROUP 5: Equipment Greaser (Grease Truck/Multi Shift).

GROUP 6: Articulating material hauler; Asphalt plant engineer; Batch plant operator; Bit sharpener; Concrete

joint machine operator (canal and similar type); Concrete planer operator; Dandy digger; Deck engine operator; Derrickman (oilfield type); Drilling machine operator, bucket or auger types (Calweld 100 bucket or similar types - Watson 1000 auger or similar types - Texoma 330, 500 or 600 auger or similar types - drilling depth of 45' maximum); Drilling machine operator; Hydrographic seeder machine operator (straw, pulp or seed), Jackson track maintainer, or similar type; Kalamazoo Switch tamper, or similar type; Machine tool operator; Maginnis internal full slab vibrator, Mechanical berm, curb or gutter (concrete or asphalt); Mechanical finisher operator (concrete, Clary-Johnson-Bidwell or similar); Micro tunnel system (below ground); Pavement breaker operator (truck mounted); Road oil mixing machine operator; Roller operator (asphalt or finish), rubber-tired earth moving equipment (single engine, up to and including 25 yds. struck); Self-propelled tar pipelining machine operator; Skiploader operator (crawler and wheel type, over 3/4 yd. and up to and including 1-1/2 yds.); Slip form pump operator (power driven hydraulic lifting device for concrete forms); Tractor operator-bulldozer, tamper-scraper (single engine, up to 100 h.p. flywheel and similar types, up to and including D-5 and similar types); Tugger hoist operator (1 drum); Ultra high pressure waterjet cutting tool system operator; Vacuum blasting machine operator

GROUP 8: Asphalt or concrete spreading operator (tamping or finishing); Asphalt paving machine operator (Barber Greene or similar type); Asphalt-rubber distribution operator; Backhoe operator (up to and including 3/4 yd.), small ford, Case or similar; Cast-in-place pipe laying machine operator; Combination mixer and compressor operator (gunite work); Compactor operator (self-propelled); Concrete mixer operator (paving); Crushing plant operator; Drill Doctor; Drilling machine operator, Bucket or auger types (Calweld 150 bucket or similar types - Watson 1500, 2000 2500 auger or similar types - Texoma 700, 800 auger or similar types - drilling depth of 60' maximum); Elevating grader operator; Grade checker; Gradall operator; Grouting machine operator; Heavy-duty repairman; Heavy equipment robotics operator; Kalamazoo balliste regulator or similar type; Kolman belt loader and similar type; Le Tourneau blob compactor or similar type; Loader operator (Athey, Euclid, Sierra and similar types); Mobark Chipper or similar; Ozzie padder or similar types; P.C. slot saw; Pneumatic concrete placing machine operator (Hackley-Presswell or similar type);

Pumpcrete gun operator; Rock Drill or similar types; Rotary drill operator (excluding caisson type); Rubber-tired earth-moving equipment operator (single engine, caterpillar, Euclid, Athey Wagon and similar types with any and all attachments over 25 yds. up to and including 50 cu. yds. struck); Rubber-tired earth-moving equipment operator (multiple engine up to and including 25 yds. struck); Rubber-tired scraper operator (self-loading paddle wheel type-John Deere, 1040 and similar single unit); Self-propelled curb and gutter machine operator; Shuttle buggy; Skiploader operator (crawler and wheel type over 1-1/2 yds. up to and including 6-1/2 yds.); Soil remediation plant operator; Surface heaters and planer operator; Tractor compressor drill combination operator; Tractor operator (any type larger than D-5 - 100 flywheel h.p. and over, or similar-bulldozer, tamper, scraper and push tractor single engine); Tractor operator (boom attachments), Traveling pipe wrapping, cleaning and bending machine operator; Trenching machine operator (over 6 ft. depth capacity, manufacturer's rating); trenching Machine with Road Miner attachment (over 6 ft depth capacity): Ultra high pressure waterjet cutting tool system mechanic; Water pull (compaction) operator

GROUP 9: Heavy Duty Repairman

GROUP 10: Drilling machine operator, Bucket or auger types (Calweld 200 B bucket or similar types-Watson 3000 or 5000 auger or similar types-Texoma 900 auger or similar types-drilling depth of 105' maximum); Dual drum mixer, dynamic compactor LDC350 (or similar types); Monorail locomotive operator (diesel, gas or electric); Motor patrol-blade operator (single engine); Multiple engine tractor operator (Euclid and similar type-except Quad 9 cat.); Rubber-tired earth-moving equipment operator (single engine, over 50 yds. struck); Pneumatic pipe ramming tool and similar types; Prestressed wrapping machine operator; Rubber-tired earth-moving equipment operator (single engine, over 50 yds. struck); Rubber tired earth moving equipment operator (multiple engine, Euclid, caterpillar and similar over 25 yds. and up to 50 yds. struck), Tower crane repairman; Tractor loader operator (crawler and wheel type over 6-1/2 yds.); Woods mixer operator (and similar Pugmill equipment)

GROUP 11: Heavy Duty Repairman - Welder Combination, Welder - Certified.

GROUP 12: Auto grader operator; Automatic slip form operator; Drilling machine operator, bucket or auger types (Calweld, auger 200 CA or similar types - Watson, auger 6000 or similar types - Hughes Super Duty, auger 200 or similar types - drilling depth of 175' maximum); Hoe ram or similar with compressor; Mass excavator operator less than 750 cu. yards; Mechanical finishing machine operator; Mobile form traveler operator; Motor patrol operator (multi-engine); Pipe mobile machine operator; Rubber-tired earth-moving equipment operator (multiple engine, Euclid, Caterpillar and similar type, over 50 cu. yds. struck); Rubber-tired self-loading scraper operator (paddle-wheel-auger type self-loading - two (2) or more units)

GROUP 13: Rubber-tired earth-moving equipment operator operating equipment with push-pull system (single engine, up to and including 25 yds. struck)

GROUP 14: Canal liner operator; Canal trimmer operator; Remote-control earth-moving equipment operator (operating a second piece of equipment: \$1.00 per hour additional); Wheel excavator operator (over 750 cu. yds.)

GROUP 15: Rubber-tired earth-moving equipment operator, operating equipment with push-pull system (single engine, Caterpillar, Euclid, Athey Wagon and similar types with any and all attachments over 25 yds. and up to and including 50 yds. struck); Rubber-tired earth-moving equipment operator, operating equipment with push-pull system (multiple engine-up to and including 25 yds. struck)

GROUP 16: Rubber-tired earth-moving equipment operator, operating equipment with push-pull system (single engine, over 50 yds. struck); Rubber-tired earth-moving equipment operator, operating equipment with push-pull system (multiple engine, Euclid, Caterpillar and similar, over 25 yds. and up to 50 yds. struck)

GROUP 17: Rubber-tired earth-moving equipment operator, operating equipment with push-pull system (multiple engine, Euclid, Caterpillar and similar, over 50 cu. yds. struck); Tandem tractor operator (operating crawler type tractors in tandem - Quad 9 and similar type)

GROUP 18: Rubber-tired earth-moving equipment operator, operating in tandem (scrapers, belly dumps and similar

types in any combination, excluding compaction units - single engine, up to and including 25 yds. struck)

GROUP 19: Rotex concrete belt operator (or similar types); Rubber-tired earth-moving equipment operator, operating in tandem (scrapers, belly dumps and similar types in any combination, excluding compaction units - single engine, Caterpillar, Euclid, Athey Wagon and similar types with any and all attachments over 25 yds. and up to and including 50 cu. yds. struck); Rubber-tired earth-moving equipment operator, operating in tandem (scrapers, belly dumps and similar types in any combination, excluding compaction units - multiple engine, up to and including 25 yds. struck)

GROUP 20: Rubber-tired earth-moving equipment operator, operating in tandem (scrapers, belly dumps and similar types in any combination, excluding compaction units - single engine, over 50 yds. struck); Rubber-tired earth-moving equipment operator, operating in tandem (scrapers, belly dumps, and similar types in any combination, excluding compaction units - multiple engine, Euclid, Caterpillar and similar, over 25 yds. and up to 50 yds. struck)

GROUP 21: Rubber-tired earth-moving equipment operator, operating in tandem (scrapers, belly dumps and similar types in any combination, excluding compaction units - multiple engine, Euclid, Caterpillar and similar type, over 50 cu. yds. struck)

GROUP 22: Rubber-tired earth-moving equipment operator, operating equipment with the tandem push-pull system (single engine, up to and including 25 yds. struck)

GROUP 23: Rubber-tired earth-moving equipment operator, operating equipment with the tandem push-pull system (single engine, Caterpillar, Euclid, Athey Wagon and similar types with any and all attachments over 25 yds. and up to and including 50 yds. struck); Rubber-tired earth-moving equipment operator, operating with the tandem push-pull system (multiple engine, up to and including 25 yds. struck)

GROUP 24: Rubber-tired earth-moving equipment operator, operating equipment with the tandem push-pull system (single engine, over 50 yds. struck); Rubber-tired earth-moving equipment operator, operating equipment with

the tandem push-pull system (multiple engine, Euclid, Caterpillar and similar, over 25 yds. and up to 50 yds. struck)

GROUP 25: Concrete pump operator-truck mounted; Rubber-tired earth-moving equipment operator, operating equipment with the tandem push-pull system (multiple engine, Euclid, Caterpillar and similar type, over 50 cu. yds. struck)

CRANES, PILEDRIVING AND HOISTING EQUIPMENT CLASSIFICATIONS

GROUP 1: Engineer oiler; Fork lift operator (includes loed, lull or similar types)

GROUP 2: Truck crane oiler

GROUP 3: A-frame or winch truck operator; Ross carrier operator (jobsite)

GROUP 4: Bridge-type unloader and turntable operator; Helicopter hoist operator

GROUP 5: Hydraulic boom truck; Stinger crane (Austin-Western or similar type); Tugger hoist operator (1 drum)

GROUP 6: Bridge crane operator; Cretor crane operator; Hoist operator (Chicago boom and similar type); Lift mobile operator; Lift slab machine operator (Vagtborg and similar types); Material hoist and/or manlift operator; Polar gantry crane operator; Self Climbing scaffold (or similar type); Shovel, backhoe, dragline, clamshell operator (over 3/4 yd. and up to 5 cu. yds. mrc); Tugger hoist operator

GROUP 7: Pedestal crane operator; Shovel, backhoe, dragline, clamshell operator (over 5 cu. yds. mrc); Tower crane repair; Tugger hoist operator (3 drum)

GROUP 8: Crane operator (up to and including 25 ton capacity); Crawler transporter operator; Derrick barge operator (up to and including 25 ton capacity); Hoist operator, stiff legs, Guy derrick or similar type (up to and including 25 ton capacity); Shovel, backhoe, dragline, clamshell operator (over 7 cu. yds., M.R.C.)

GROUP 9: Crane operator (over 25 tons and up to and including 50 tons mrc); Derrick barge operator (over 25 tons up to and including 50 tons mrc); Highline cableway operator;

Hoist operator, stiff legs, Guy derrick or similar type (over 25 tons up to and including 50 tons mrc); K-crane operator; Polar crane operator; Self erecting tower crane operator maximum lifting capacity ten tons

GROUP 10: Crane operator (over 50 tons and up to and including 100 tons mrc); Derrick barge operator (over 50 tons up to and including 100 tons mrc); Hoist operator, stiff legs, Guy derrick or similar type (over 50 tons up to and including 100 tons mrc), Mobile tower crane operator (over 50 tons, up to and including 100 tons M.R.C.); Tower crane operator and tower gantry

GROUP 11: Crane operator (over 100 tons and up to and including 200 tons mrc); Derrick barge operator (over 100 tons up to and including 200 tons mrc); Hoist operator, stiff legs, Guy derrick or similar type (over 100 tons up to and including 200 tons mrc); Mobile tower crane operator (over 100 tons up to and including 200 tons mrc)

GROUP 12: Crane operator (over 200 tons up to and including 300 tons mrc); Derrick barge operator (over 200 tons up to and including 300 tons mrc); Hoist operator, stiff legs, Guy derrick or similar type (over 200 tons, up to and including 300 tons mrc); Mobile tower crane operator (over 200 tons, up to and including 300 tons mrc)

GROUP 13: Crane operator (over 300 tons); Derrick barge operator (over 300 tons); Helicopter pilot; Hoist operator, stiff legs, Guy derrick or similar type (over 300 tons); Mobile tower crane operator (over 300 tons)

TUNNEL CLASSIFICATIONS

GROUP 1: Skiploader (wheel type up to 3/4 yd. without attachment)

GROUP 2: Power-driven jumbo form setter operator

GROUP 3: Dinkey locomotive or motorperson (up to and including 10 tons)

GROUP 4: Bit sharpener; Equipment greaser (grease truck); Slip form pump operator (power-driven hydraulic lifting device for concrete forms); Tugger hoist operator (1 drum); Tunnel locomotive operator (over 10 and up to and including 30 tons)

GROUP 5: Backhoe operator (up to and including 3/4 yd.); Small Ford, Case or similar; Drill doctor; Grouting machine operator; Heading shield operator; Heavy-duty repairperson; Loader operator (Athey, Euclid, Sierra and similar types); Mucking machine operator (1/4 yd., rubber-tired, rail or track type); Pneumatic concrete placing machine operator (Hackley-Presswell or similar type); Pneumatic heading shield (tunnel); Pumpcrete gun operator; Tractor compressor drill combination operator; Tugger hoist operator (2 drum); Tunnel locomotive operator (over 30 tons)

GROUP 6: Heavy Duty Repairman

GROUP 7: Tunnel mole boring machine operator

ENGINEERS ZONES

\$1.00 additional per hour for all of IMPERIAL County and the portions of KERN, RIVERSIDE & SAN BERNARDINO Counties as defined below:

That area within the following Boundary: Begin in San Bernardino County, approximately 3 miles NE of the intersection of I-15 and the California State line at that point which is the NW corner of Section 1, T17N, R14E, San Bernardino Meridian. Continue W in a straight line to that point which is the SW corner of the northwest quarter of Section 6, T27S, R42E, Mt. Diablo Meridian. Continue North to the intersection with the Inyo County Boundary at that point which is the NE corner of the western half of the northern quarter of Section 6, T25S, R42E, MDM. Continue W along the Inyo and San Bernardino County boundary until the intersection with Kern County, as that point which is the SE corner of Section 34, T24S, R40E, MDM. Continue W along the Inyo and Kern County boundary until the intersection with Tulare County, at that point which is the SW corner of the SE quarter of Section 32, T24S, R37E, MDM. Continue W along the Kern and Tulare County boundary, until that point which is the NW corner of T25S, R32E, MDM. Continue S following R32E lines to the NW corner of T31S, R32E, MDM. Continue W to the NW corner of T31S, R31E, MDM. Continue S to the SW corner of T32S, R31E, MDM. Continue W to SW corner of SE quarter of Section 34, T32S, R30E, MDM. Continue S to SW corner of T11N, R17W, SBM. Continue E along south boundary of T11N, SBM to SW corner of T11N, R7W, SBM. Continue S to SW corner of T9N, R7W, SBM. Continue E along south boundary of T9N, SBM to SW corner of T9N, R1E, SBM.

Continue S along west boundary of R1E, SMB to Riverside County line at the SW corner of T1S, R1E, SBM. Continue E along south boundary of T1S, SBM (Riverside County Line) to SW corner of T1S, R10E, SBM. Continue S along west boundary of R10E, SBM to Imperial County line at the SW corner of T8S, R10E, SBM. Continue W along Imperial and Riverside county line to NW corner of T9S, R9E, SBM. Continue S along the boundary between Imperial and San Diego Counties, along the west edge of R9E, SBM to the south boundary of Imperial County/California state line. Follow the California state line west to Arizona state line, then north to Nevada state line, then continuing NW back to start at the point which is the NW corner of Section 1, T17N, R14E, SBM

\$1.00 additional per hour for portions of SAN LUIS OBISPO, KERN, SANTA BARBARA & VENTURA as defined below:

That area within the following Boundary: Begin approximately 5 miles north of the community of Cholame, on the Monterey County and San Luis Obispo County boundary at the NW corner of T25S, R16E, Mt. Diablo Meridian. Continue south along the west side of R16E to the SW corner of T30S, R16E, MDM. Continue E to SW corner of T30S, R17E, MDM. Continue S to SW corner of T31S, R17E, MDM. Continue E to SW corner of T31S, R18E, MDM. Continue S along West side of R18E, MDM as it crosses into San Bernardino Meridian numbering area and becomes R30W. Follow the west side of R30W, SBM to the SW corner of T9N, R30W, SBM. Continue E along the south edge of T9N, SBM to the Santa Barbara County and Ventura County boundary at that point which is the SW corner of Section 34. T9N, R24W, SBM, continue S along the Ventura County line to that point which is the SW corner of the SE quarter of Section 32, T7N, R24W, SBM. Continue E along the south edge of T7N, SBM to the SE corner to T7N, R21W, SBM. Continue N along East side of R21W, SBM to Ventura County and Kern County boundary at the NE corner of T8N, R21W. Continue W along the Ventura County and Kern County boundary to the SE corner of T9N, R21W. Continue North along the East edge of R21W, SBM to the NE corner of T12N, R21W, SBM. Continue West along the north edge of T12N, SBM to the SE corner of T32S, R21E, MDM. [T12N SBM is a think strip between T11N SBM and T32S MDM]. Continue North along the East side of R21E, MDM to the Kings County and Kern County border at the NE corner of T25S, R21E, MDM, continue West along the Kings County and Kern County Boundary until the intersection of San Luis Obispo County. Continue west along the Kings County and San Luis Obispo County boundary until the intersection with Monterey County. Continue West along the Monterey County and San Luis

Obispo County boundary to the beginning point at the NW corner of T25S, R16E, MDM.

\$2.00 additional per hour for INYO and MONO Counties and the Northern portion of SAN BERNARDINO County as defined below:

That area within the following Boundary: Begin at the intersection of the northern boundary of Mono County and the California state line at the point which is the center of Section 17, T10N, R22E, Mt. Diablo Meridian. Continue S then SE along the entire western boundary of Mono County, until it reaches Inyo County at the point which is the NE corner of the Western half of the NW quarter of Section 2, T8S, R29E, MDM. Continue SSE along the entire western boundary of Inyo County, until the intersection with Kern County at the point which is the SW corner of the SE 1/4 of Section 32, T24S, R37E, MDM. Continue E along the Inyo and Kern County boundary until the intersection with San Bernardino County at that point which is the SE corner of section 34, T24S, R40E, MDM. Continue E along the Inyo and San Bernardino County boundary until the point which is the NE corner of the Western half of the NW quarter of Section 6, T25S, R42E, MDM. Continue S to that point which is the SW corner of the NW quarter of Section 6, T27S, R42E, MDM. Continue E in a straight line to the California and Nevada state border at the point which is the NW corner of Section 1, T17N, R14E, San Bernardino Meridian. Then continue NW along the state line to the starting point, which is the center of Section 18, T10N, R22E, MDM.

REMAINING AREA NOT DEFINED ABOVE RECIEVES BASE RATE

ENGI0012-004 08/01/2020

	Rates	Fringes
OPERATOR: Power Equipment		
(DREDGING)		
(1) Leverman.....	\$ 56.40	30.00
(2) Dredge dozer.....	\$ 50.43	30.00
(3) Deckmate.....	\$ 50.32	30.00
(4) Winch operator (stern winch on dredge).....	\$ 49.77	30.00
(5) Fireman-Oiler, Deckhand, Bargeman, Leveehand.....	\$ 49.23	30.00
(6) Barge Mate.....	\$ 49.84	30.00

IRON0229-001 07/01/2021

	Rates	Fringes
IRONWORKER		
Fence Erector.....	\$ 38.08	24.91
Ornamental, Reinforcing and Structural.....	\$ 43.00	33.55

PREMIUM PAY:

\$6.00 additional per hour at the following locations:

China Lake Naval Test Station, Chocolate Mountains Naval
Reserve-Niland,
Edwards AFB, Fort Irwin Military Station, Fort Irwin Training
Center-Goldstone, San Clemente Island, San Nicholas Island,
Susanville Federal Prison, 29 Palms - Marine Corps, U.S. Marine
Base - Barstow, U.S. Naval Air Facility - Seale, Vandenberg AFB

\$4.00 additional per hour at the following locations:

Army Defense Language Institute - Monterey, Fallon Air Base,
Naval Post Graduate School - Monterey, Yermo Marine Corps
Logistics Center

\$2.00 additional per hour at the following locations:

Port Hueneme, Port Mugu, U.S. Coast Guard Station - Two Rock

LABO0089-001 07/01/2020

	Rates	Fringes
LABORER (BUILDING and all other Residential Construction)		
Group 1.....	\$ 34.18	20.48
Group 2.....	\$ 34.86	20.48
Group 3.....	\$ 35.57	20.48
Group 4.....	\$ 36.37	20.48
Group 5.....	\$ 38.30	20.48
LABORER (RESIDENTIAL		

CONSTRUCTION - See definition
below)

(1) Laborer.....	\$ 30.82	18.80
(2) Cleanup, Landscape, Fencing (Chain Link & Wood).	\$ 29.53	18.80

RESIDENTIAL DEFINITION: Wood or metal frame construction of single family residences, apartments and condominiums - excluding (a) projects that exceed three stories over a garage level, (b) any utility work such as telephone, gas, water, sewer and other utilities and (c) any fine grading work, utility work or paving work in the future street and public right-of-way; but including all rough grading work at the job site behind the existing right of way

LABORER CLASSIFICATIONS

GROUP 1: Cleaning and handling of panel forms; Concrete Screeding for Rought Strike-off; Concrete, water curing; Demolition laborer; Flagman; Gas, oil and/or water pipeline laborer; General Laborer; General clean-up laborer; Landscape laborer; Jetting laborer; Temporary water and air lines laborer; Material hoseman (walls, slabs, floors and decks); Plugging, filling of Shee-bolt holes; Dry packing of concrete; Railroad maintenance, Repair Trackman and road beds, Streetcar and railroad construction trac laborers; Slip form raisers; Slurry seal crews (mixer operator, applicator operator, squeegee man, Shuttle man, top man), filling of cracks by any method on any surface; Tarman and mortar man; Tool crib or tool house laborer; Window cleaner; Wire Mesh puling-all concrete pouring operations

GROUP 2: Asphalt Shoveler; Cement Dumper (on 1 yard or larger mixer and handling bulk cement); Cesspool digger and installer; Chucktender; Chute man, pouring concrete, the handling of the cute from ready mix trucks, such as walls, slabs, decks, floors, foundations, footings, curbs, gutters and sidewalks; Concrete curer-impervious membrane and form oiler; Cutting torch operator (demoliton); Guinea chaser; Headboard man-asphlt; Laborer, packing rod steel and pans; membrane vapor barrier installer; Power broom sweepers (small); Riiprap, stonepaver, placing stone or wet sacked concrete; Roto scraper and tiller; Tank sealer and cleaner; Tree climber, faller, chain saw operator, Pittsburgh Chipper and similar type brush shredders; Underground laborers, including caisson bellower

GROUP 3: Buggymobile; Concrete cutting torch; Concrete cutting torch; Concrete pile cutter; Driller, jackhammer, 2 1/2 feet drill steel or longer; Dri Pak-it machine; High sealer (including drilling of same); Hydro seeder and similar type; Impact wrench, mult-plate; Kettlemen, potmen and men applying asphalt, lay-kold, creosote, line caustic and similar type materials (applying means applying, dipping, brushing or handling of such materials for pipe wrapping and waterproofing); Operators of pneumatic, gas, electric tools, vibrating machines, pavement breakers, air blasting, come-along, and similar mechanical tools not separately classified herein; Pipelayers back up man coating, grouting, making of joints, sealing, caulking, diapering and including rubber gasket joints, pointing and any and all other services; Rotary Scarifier or multiple head concrete chipping scarifier; Steel header board man and guideline setter; Tampers, Barko, Wacker and similar type; Trenching machine, handpropelled

GROUP 4: Asphalt raker, luterman, ironer, asphalt dumpman and asphalt spreader boxes (all types); Concrete core cutter (walls, floors or ceilings), Grinder or sander; Concrete saw man; cutting walls or flat work, scoring old or new concrete; Cribber, shorer, lagging, sheeting and trench bracing, hand-guided lagging hammer; Laser beam in connection with laborer's work; Oversize concrete vibrator operator 70 pounds and over; Pipelayer performing all services in the laying, installation and all forms of connection of pipe from the point of receiving pipe in the ditch until completion of operation, including any and all forms of tubular material, whether pipe, metallic or non-metallic, conduit, and any other stationary type of tubular device used for the conveying of any substance or element, whether water, sewage, solid, gas, air or other product whatsoever and without regard to the nature of material from which the tubular material is fabricated; No joint pipe and stripping of same; Prefabricated manhole installer; Sandblaster (nozzleman), Porta shot-blast, water blasting

GROUP 5: Blasters Powderman-All work of loading holes, placing and blasting of all powder and explosives of whatever type, regardless of method used for such loading and placing; Driller-all power drills, excluding jackhammer, whether core, diamond, wagon, track, multiple unit, and any and all other types of mechanical drills without regard to the form of motive power.

LABO0089-002 11/01/2020

	Rates	Fringes
LABORER (MASON TENDER).....	\$ 33.00	19.23

LABO0089-004 07/01/2020

HEAVY AND HIGHWAY CONSTRUCTION

	Rates	Fringes
Laborers:		
Group 1.....	\$ 35.30	20.48
Group 2.....	\$ 35.76	20.48
Group 3.....	\$ 36.17	20.48
Group 4.....	\$ 37.01	20.48
Group 5.....	\$ 40.28	20.48

LABORER CLASSIFICATIONS

GROUP 1: Laborer: General or Construction Laborer, Landscape Laborer. Asphalt Rubber Material Loader. Boring Machine Tender (outside), Carpenter Laborer (cleaning, handling, oiling & blowing of panel forms and lumber), Concrete Laborer, Concrete Screeding for rough strike-off, Concrete water curing. Concrete Curb & Gutter laborer, Certified Confined Space Laborer, Demolition laborer & Cleaning of Brick and lumber, Expansion Joint Caulking; Environmental Remediation, Monitoring Well, Toxic waste and Geotechnical Drill tender, Fine Grader, Fire Watcher, Limbers, Brush Loader, Pilers and Debris Handlers. flagman. Gas Oil and Water Pipeline Laborer. Material Hoseman (slabs, walls, floors, decks); Plugging, filling of shee bolt holes; Dry packing of concrete and patching; Post Holer Digger (manual); Railroad maintenance, repair trackman, road beds; Rigging & signaling; Scaler, Slip-Form Raisers, Filling cracks on any surface, tool Crib or Tool House Laborer, Traffic control (signs, barriers, barricades, delineator, cones etc.), Window Cleaner

GROUP 2: Asphalt abatement; Buggymobile; Cement dumper (on 1 yd. or larger mixers and handling bulk cement); Concrete curer, impervious membrane and form oiler; Chute man, pouring concrete; Concrete cutting torch; Concrete pile

cutter; driller/Jackhammer, with drill steel 2 1/2 feet or longer; Dry pak-it machine; Fence erector; Pipeline wrapper, gas, oil, water, pot tender & form man; Grout man; Installation of all asphalt overlay fabric and materials used for reinforcing asphalt; Irrigation laborer; Kettleman-Potman hot mop, includes applying asphalt, lay-kold, creosote, lime caustic and similar tyhpes of materials (dipping, brushing, handling) and waterproofing; Membrane vapor barrier installer; Pipelayer backup man (coating, grouting, making of joints, sealing caulkiing, diapering including rubber basket joints, pointing); Rotary scarifier, multiple head concrete chipper; Rock slinger; Roto scraper & tiller; Sandblaster pot tender; Septic tank digger/installer; Tamper/wacker operator; Tank scaler & cleaner; Tar man & mortar man; Tree climber/faller, chainb saw operator, Pittsburgh chipper & similar type brush shredders.

GROUP 3: Asphalt, installation of all frabrics; Buggy Mobile Man, Bushing hammer; Compactor (all types), Concrete Curer - Impervious membrane, Form Oiler, Concrete Cutting Torch, Concrete Pile Cutter, Driller/Jackhammer with drill steel 2 1/2 ft or longer, Dry Pak-it machine, Fence erector including manual post hole digging, Gas oil or water Pipeline Wrapper - 6 ft pipe and over, Guradrail erector, Hydro seeder, Impact Wrench man (multi plate), kettleman-Potman Hot Mop includes applying Asphalt, Lay-Kold, Creosote, lime caustic and similar types of materials (dipping, brushing or handling) and waterproofing. Laser Beam in connection with Laborer work. High Scaler, Operators of Pneumatic Gas or Electric Tools, Vibrating Machines, Pavement Breakers, Air Blasting, Come-Alongs and similar mechanical tools, Remote-Controlled Robotic Tools in connection with Laborers work. Pipelayer Backup Man (Coating, grouting, m makeing of joints, sealing, caulking, diapering including rubber gasket joints, pointing and other services). Power Post Hole Digger, Rotary Scarifier (multiple head concrete chipper scarifier), Rock Slinger, Shot Blast equipment (8 to 48 inches), Steel Headerboard Man and Guideline Setter, Tamper/Wacker operator and similar types, Trenching Machine hand propelled.

GROUP 4: Any worker exposed to raw sewage. Asphalt Raker, Luteman, Asphalt Dumpman, Asphalt Spreader Boxes, Concrete Core Cutter, Concrete Saw Man, Cribber, Shorer, Head Rock Slinger. Installation of subsurface instrumentation,

monitoring wells or points, remediation system installer; Laborer, asphalt-rubber distributor bootman; Oversize concrete vibrator operators, 70 pounds or over. Pipelayer, Prefabricated Manhole Installer, Sandblast Nozzleman (Water Blasting-Porta Shot Blast), Traffic Lane Closure.

GROUP 5: Blasters Powderman-All work of loading holes, placing and blasting of all powder and explosives of whatever type, regardless of method used for such loading and placing; Horizontal directional driller, Boring system, Electronic tracking, Driller: all power drills excluding jackhammer, whether core, diamond, wagon, track, multiple unit, and all other types of mechanical drills without regard to form of motive power. Environmental remediation, Monitoring well, Toxic waste and Geotechnical driller, Toxic waste removal. Welding in connection with Laborer's work.

LABO0300-005 03/01/2021

	Rates	Fringes
Asbestos Removal Laborer.....	\$ 37.49	21.88

SCOPE OF WORK: Includes site mobilization, initial site cleanup, site preparation, removal of asbestos-containing material and toxic waste, encapsulation, enclosure and disposal of asbestos- containing materials and toxic waste by hand or with equipment or machinery; scaffolding, fabrication of temporary wooden barriers and assembly of decontamination stations.

LABO0345-001 07/01/2021

	Rates	Fringes
LABORER (GUNITE)		
GROUP 1.....	\$ 46.50	20.42
GROUP 2.....	\$ 45.55	20.42
GROUP 3.....	\$ 42.01	20.42

FOOTNOTE: GUNITE PREMIUM PAY: Workers working from a Bosn'n's Chair or suspended from a rope or cable shall receive 40 cents per hour above the foregoing applicable classification rates. Workers doing gunite and/or

shotcrete work in a tunnel shall receive 35 cents per hour above the foregoing applicable classification rates, paid on a portal-to-portal basis. Any work performed on, in or above any smoke stack, silo, storage elevator or similar type of structure, when such structure is in excess of 75'-0" above base level and which work must be performed in whole or in part more than 75'-0" above base level, that work performed above the 75'-0" level shall be compensated for at 35 cents per hour above the applicable classification wage rate.

GUNITE LABORER CLASSIFICATIONS

GROUP 1: Rodmen, Nozzlemen

GROUP 2: Gunmen

GROUP 3: Reboundmen

LAB01184-001 07/01/2021

	Rates	Fringes
Laborers: (HORIZONTAL DIRECTIONAL DRILLING)		
(1) Drilling Crew Laborer...	\$ 38.89	17.10
(2) Vehicle Operator/Hauler.	\$ 39.06	17.10
(3) Horizontal Directional Drill Operator.....	\$ 40.91	17.10
(4) Electronic Tracking Locator.....	\$ 42.91	17.10
Laborers: (STRIPING/SLURRY SEAL)		
GROUP 1.....	\$ 40.10	20.12
GROUP 2.....	\$ 41.40	20.12
GROUP 3.....	\$ 43.41	20.12
GROUP 4.....	\$ 45.15	20.12

LABORERS - STRIPING CLASSIFICATIONS

GROUP 1: Protective coating, pavement sealing, including repair and filling of cracks by any method on any surface in parking lots, game courts and playgrounds; carstops; operation of all related machinery and equipment; equipment repair technician

GROUP 2: Traffic surface abrasive blaster; pot tender - removal of all traffic lines and markings by any method (sandblasting, waterblasting, grinding, etc.) and preparation of surface for coatings. Traffic control person: controlling and directing traffic through both conventional and moving lane closures; operation of all related machinery and equipment

GROUP 3: Traffic delineating device applicator: Layout and application of pavement markers, delineating signs, rumble and traffic bars, adhesives, guide markers, other traffic delineating devices including traffic control. This category includes all traffic related surface preparation (sandblasting, waterblasting, grinding) as part of the application process. Traffic protective delineating system installer: removes, relocates, installs, permanently affixed roadside and parking delineation barricades, fencing, cable anchor, guard rail, reference signs, monument markers; operation of all related machinery and equipment; power broom sweeper

GROUP 4: Striper: layout and application of traffic stripes and markings; hot thermo plastic; tape traffic stripes and markings, including traffic control; operation of all related machinery and equipment

LAB01414-003 08/05/2020

	Rates	Fringes
LABORER		
PLASTER CLEAN-UP LABORER....	\$ 36.03	21.01
PLASTER TENDER.....	\$ 38.58	21.01

Work on a swing stage scaffold: \$1.00 per hour additional.

Work at Military Bases - \$3.00 additional per hour:

Coronado Naval Amphibious Base, Fort Irwin, Marine Corps Air Station-29 Palms, Imperial Beach Naval Air Station, Marine Corps Logistics Supply Base, Marine Corps Pickle Meadows, Mountain Warfare Training Center, Naval Air Facility-Seeley, North Island Naval Air Station, Vandenberg AFB.

PAIN0036-001 07/01/2020

	Rates	Fringes
Painters: (Including Lead Abatement)		
(1) Repaint (excludes San Diego County).....	\$ 29.59	17.12
(2) All Other Work.....	\$ 33.12	17.24

REPAINT of any previously painted structure. Exceptions: work involving the aerospace industry, breweries, commercial recreational facilities, hotels which operate commercial establishments as part of hotel service, and sports facilities.

PAIN0036-010 10/01/2021

	Rates	Fringes
DRYWALL FINISHER/TAPER		
(1) Building & Heavy Construction.....	\$ 37.14	20.90
(2) Residential Construction (Wood frame apartments, single family homes and multi-duplexes up to and including four stories).....	\$ 32.27	14.70

PAIN0036-012 10/01/2020

	Rates	Fringes
GLAZIER.....	\$ 45.55	18.06

PAIN0036-019 01/01/2021

	Rates	Fringes
SOFT FLOOR LAYER.....	\$ 33.52	17.59

PLAS0200-005 08/04/2021

	Rates	Fringes
PLASTERER.....	\$ 45.77	18.39

NORTH ISLAND NAVAL AIR STATION, COLORADO NAVAL AMPHIBIOUS
BASE, IMPERIAL BEACH NAVAL AIR STATION: \$3.00 additional
per hour.

PLAS0500-001 07/01/2018

	Rates	Fringes
CEMENT MASON/CONCRETE FINISHER		
GROUP 1.....	\$ 26.34	19.77
GROUP 2.....	\$ 27.99	19.77
GROUP 3.....	\$ 30.07	21.12

CEMENT MASONS - work inside the building line, meeting the
following criteria:

GROUP 1: Residential wood frame project of any size; work
classified as Type III, IV or Type V construction;
interior tenant improvement work regardless the size of the
project; any wood frame project of four stories or less.

GROUP 2: Work classified as type I and II construction

GROUP 3: All other work

PLUM0016-006 09/01/2021

	Rates	Fringes
PLUMBER, PIPEFITTER, STEAMFITTER		
Camp Pendleton; Vandenberg Air Force Base.....	\$ 58.33	25.36
Work ONLY on new additions and remodeling of commercial buildings, bars, restaurants, and stores not to exceed 5,000 sq. ft. of floor space.....	\$ 52.20	24.38
Work ONLY on strip malls, light commercial, tenant improvement and remodel work.....	\$ 39.91	22.71
All other work except work on new additions and		

remodeling of bars, restaurant, stores and commercial buildings not to exceed 5,000 sq. ft. of floor space and work on strip malls, light commercial, tenant improvement and remodel work.....	\$ 53.83	25.36

PLUM0016-011 09/01/2021		
	Rates	Fringes
PLUMBER/PIPEFITTER Residential.....	\$ 42.74	21.28

PLUM0345-001 09/01/2021		
	Rates	Fringes
PLUMBER Landscape/Irrigation Fitter..	\$ 36.85	24.75
Sewer & Storm Drain Work....	\$ 40.94	22.13

ROOF0045-001 07/01/2021		
	Rates	Fringes
ROOFER.....	\$ 37.75	10.24

* SFCA0669-001 04/01/2022		
	Rates	Fringes
SPRINKLER FITTER.....	\$ 44.99	25.16

SHEE0206-001 07/01/2020		
	Rates	Fringes
SHEET METAL WORKER Camp Pendleton.....	\$ 42.62	29.55
Except Camp Pendleton.....	\$ 40.62	29.55
Sheet Metal Technician.....	\$ 30.51	9.49

SHEET METAL TECHNICIAN - SCOPE:

a. Existing residential buildings, both single and multi-family, where each unit is heated and/or cooled by a separate system b. New single family residential buildings including tracts. c. New multi-family residential buildings, not exceeding five stories of living space in height, provided each unit is heated or cooled by a separate system. Hotels and motels are excluded. d. LIGHT COMMERCIAL WORK: Any sheet metal, heating and air conditioning work performed on a project where the total construction cost, excluding land, is under \$1,000,000 e. TENANT IMPROVEMENT WORK: Any work necessary to finish interior spaces to conform to the occupants of commercial buildings, after completion of the building shell

TEAM0166-001 09/01/2019

	Rates	Fringes
Truck drivers:		
GROUP 1.....	\$ 18.90	34.69
GROUP 2.....	\$ 26.49	34.69
GROUP 3.....	\$ 26.69	34.69
GROUP 4.....	\$ 26.89	34.69
GROUP 5.....	\$ 27.09	34.69
GROUP 6.....	\$ 27.59	34.69
GROUP 7.....	\$ 29.09	34.69

FOOTNOTE: HAZMAT PAY: Work on a hazmat job, where hazmat certification is required, shall be paid, in addition to the classification working in, as follows: Levels A, B and C - +\$1.00 per hour. Workers shall be paid hazmat pay in increments of four (4) and eight (8) hours.

TRUCK DRIVER CLASSIFICATIONS

GROUP 1: Fuel Man, Swamper

GROUP 2: 2-axle Dump Truck, 2-axle Flat Bed, Concrete Pumping Truck, Industrial Lift Truck, Motorized Traffic Control, Pickup Truck on Jobsite

GROUP 3: 2-axle Water Truck, 3-axle Dump Truck, 3-axle Flat Bed, Erosion Control Nozzleman, Dump Crete Truck under 6.5 yd, Forklift 15,000 lbs and over, Prell Truck, Pipeline Work Truck Driver, Road Oil Spreader, Cement Distributor or Slurry Driver, Bootman, Ross Carrier

GROUP 4: Off-road Dump Truck under 35 tons 4-axles but less than 7-axles, Low-Bed Truck & Trailer, Transit Mix Trucks under 8 yd, 3-axle Water Truck, Erosion Control Driver, Grout Mixer Truck, Dump Crete 6.5yd and over, Dumpster Trucks, DW 10, DW 20 and over, Fuel Truck and Dynamite, Truck Greaser, Truck Mounted Mobile Sweeper 2-axle Winch Truck

GROUP 5: Off-road Dump Truck 35 tons and over, 7-axles or more, Transit Mix Trucks 8 yd and over, A-Frame Truck, Swedish Cranes

GROUP 6: Off-Road Special Equipment (including but not limited to Water Pull Tankers, Athey Wagons, DJB, B70 Wuclids or like Equipment)

GROUP 7: Repairman

WELDERS - Receive rate prescribed for craft performing operation to which welding is incidental.

=====

Note: Executive Order (EO) 13706, Establishing Paid Sick Leave for Federal Contractors applies to all contracts subject to the Davis-Bacon Act for which the contract is awarded (and any solicitation was issued) on or after January 1, 2017. If this contract is covered by the EO, the contractor must provide employees with 1 hour of paid sick leave for every 30 hours they work, up to 56 hours of paid sick leave each year. Employees must be permitted to use paid sick leave for their own illness, injury or other health-related needs, including preventive care; to assist a family member (or person who is like family to the employee) who is ill, injured, or has other health-related needs, including preventive care; or for reasons resulting from, or to assist a family member (or person who is like family to the employee) who is a victim of, domestic violence, sexual assault, or stalking. Additional information on contractor requirements and worker protections under the EO is available at <https://www.dol.gov/agencies/whd/government-contracts>.

Unlisted classifications needed for work not included within the scope of the classifications listed may be added after award only as provided in the labor standards contract clauses (29CFR 5.5 (a) (1) (ii)).

The body of each wage determination lists the classification and wage rates that have been found to be prevailing for the cited type(s) of construction in the area covered by the wage determination. The classifications are listed in alphabetical order of "identifiers" that indicate whether the particular rate is a union rate (current union negotiated rate for local), a survey rate (weighted average rate) or a union average rate (weighted union average rate).

Union Rate Identifiers

A four letter classification abbreviation identifier enclosed in dotted lines beginning with characters other than "SU" or "UAVG" denotes that the union classification and rate were prevailing for that classification in the survey. Example: PLUM0198-005 07/01/2014. PLUM is an abbreviation identifier of the union which prevailed in the survey for this classification, which in this example would be Plumbers. 0198 indicates the local union number or district council number where applicable, i.e., Plumbers Local 0198. The next number, 005 in the example, is an internal number used in processing the wage determination. 07/01/2014 is the effective date of the most current negotiated rate, which in this example is July 1, 2014.

Union prevailing wage rates are updated to reflect all rate changes in the collective bargaining agreement (CBA) governing this classification and rate.

Survey Rate Identifiers

Classifications listed under the "SU" identifier indicate that no one rate prevailed for this classification in the survey and the published rate is derived by computing a weighted average rate based on all the rates reported in the survey for that classification. As this weighted average rate includes all rates reported in the survey, it may include both union and non-union rates. Example: SULA2012-007 5/13/2014. SU indicates the rates are survey rates based on a weighted average calculation of rates and are not majority rates. LA indicates the State of Louisiana. 2012 is the year of survey on which these classifications and rates are based. The next number, 007 in the example, is an internal number used in producing the wage determination. 5/13/2014 indicates the survey completion date for the classifications and rates under that identifier.

Survey wage rates are not updated and remain in effect until a new survey is conducted.

Union Average Rate Identifiers

Classification(s) listed under the UAVG identifier indicate that no single majority rate prevailed for those classifications; however, 100% of the data reported for the classifications was union data. EXAMPLE: UAVG-OH-0010 08/29/2014. UAVG indicates that the rate is a weighted union average rate. OH indicates the state. The next number, 0010 in the example, is an internal number used in producing the wage determination. 08/29/2014 indicates the survey completion date for the classifications and rates under that identifier.

A UAVG rate will be updated once a year, usually in January of each year, to reflect a weighted average of the current negotiated/CBA rate of the union locals from which the rate is based.

WAGE DETERMINATION APPEALS PROCESS

1.) Has there been an initial decision in the matter? This can be:

- * an existing published wage determination
- * a survey underlying a wage determination
- * a Wage and Hour Division letter setting forth a position on a wage determination matter
- * a conformance (additional classification and rate) ruling

On survey related matters, initial contact, including requests for summaries of surveys, should be with the Wage and Hour National Office because National Office has responsibility for the Davis-Bacon survey program. If the response from this initial contact is not satisfactory, then the process described in 2.) and 3.) should be followed.

With regard to any other matter not yet ripe for the formal process described here, initial contact should be with the Branch of Construction Wage Determinations. Write to:

Branch of Construction Wage Determinations
Wage and Hour Division
U.S. Department of Labor

200 Constitution Avenue, N.W.
Washington, DC 20210

2.) If the answer to the question in 1.) is yes, then an interested party (those affected by the action) can request review and reconsideration from the Wage and Hour Administrator (See 29 CFR Part 1.8 and 29 CFR Part 7). Write to:

Wage and Hour Administrator
U.S. Department of Labor
200 Constitution Avenue, N.W.
Washington, DC 20210

The request should be accompanied by a full statement of the interested party's position and by any information (wage payment data, project description, area practice material, etc.) that the requestor considers relevant to the issue.

3.) If the decision of the Administrator is not favorable, an interested party may appeal directly to the Administrative Review Board (formerly the Wage Appeals Board). Write to:

Administrative Review Board
U.S. Department of Labor
200 Constitution Avenue, N.W.
Washington, DC 20210

4.) All decisions by the Administrative Review Board are final.

=====

END OF GENERAL DECISIO"

ENCROACHMENT PERMIT

TR-0120 (REV. 6/2012)

Page 1 of 4

Permit No. 11-22-NCS-0067	
Dist/Co/Rte/PM 11-SD-905/3.63	
Date MARCH 16, 2022	
Fee Paid \$ 0.00 (EXEMPT)	Deposit \$ 0.00 (EXEPMT)
Performance Bond Amount (1) \$ 0.00	Payment Bond Amount (2) \$ 0.00
Bond Company N/A	
Bond Number (1) N/A	Bond Number (2) N/A

In compliance with (Check one):

☒ Your application of **JANUARY 22, 2022**

☐ Utility Notice No. _____ of _____

☐ Agreement No. _____ of _____

☐ R/W Contract No. _____ of _____

CITY OF SAN DIEGO
525 B STREET, SUITE 750, MS 908A
TO: SAN DIEGO, CA 92101

ATTN: ALEJANDRA GONZALEZ
PHONE: (619) 533-5155

, PERMITTEE

And subject to the following, PERMISSION IS HEREBY GRANTED to:

enter upon State Highway right of way in San Diego County, City of San Diego, on Route 905, post mile 3.63, to install 12 linear feet of new concrete sidewalk, curb, gutter, new curb ramp and to revegetate an small area, as shown on the attached plans, in accordance with the requirements and conditions contained herein and as further directed or approved by the State's Inspector, Pedro Aguilar, telephone number (858) 688-1605, or e-mail at pedro.aguilar@dot.ca.gov.

The State's Inspector shall be notified seven working days prior to starting work and prior to requesting a lane closure or an activity that may cause a traffic impact.

Working hours shall be as directed or approved by the State's Inspector and in accordance with the attached lane closure requirement chart no. 1.

No vehicles or equipment shall be parked within the highway right of way at any time, except for those vehicles or that equipment actually engaged in the work, during the working hours specified herein.

(CONTINUED)

THIS PERMIT IS NOT A PROPERTY RIGHT AND DOES NOT TRANSFER WITH THE PROPERTY TO A NEW OWNER

The following attachments are also included as part of this permit (Check applicable):

<input checked="" type="checkbox"/> Yes	<input type="checkbox"/> No	General Provisions
<input type="checkbox"/> Yes	<input checked="" type="checkbox"/> No	Utility Maintenance Provisions
<input checked="" type="checkbox"/> Yes	<input type="checkbox"/> No	Special Provisions
<input type="checkbox"/> Yes	<input checked="" type="checkbox"/> No	A Cal-OSHA permit, if required: Permit No. _____
<input type="checkbox"/> Yes	<input checked="" type="checkbox"/> No	As-Built Plans Submittal Route Slip for Locally Advertised Projects
<input type="checkbox"/> Yes	<input checked="" type="checkbox"/> No	Water Pollution Control Plan

In addition to fee, the permittee will be billed actual costs for:

<input type="checkbox"/> Yes	<input checked="" type="checkbox"/> No	Review
<input type="checkbox"/> Yes	<input checked="" type="checkbox"/> No	Inspection
<input type="checkbox"/> Yes	<input checked="" type="checkbox"/> No	Field Work

(If any Caltrans effort expended)

☒ Yes ☐ No The information in the environmental documentation has been reviewed and considered prior to approval of this permit.

This permit is void unless the work is complete before

DECEMBER 31, 2022.

This permit is to be strictly construed and no other work other than specifically mentioned is hereby authorized.

No project work shall be commenced until all other necessary permits and environmental clearances have been obtained.

WOV:ts

cc: Permits
TValles, Reg. Mgr.
PAguilar, Inspector
Permittee
Permittee's Contractor

APPROVED:

Gustavo Dallarda, District Director

William O. Viver

For Joy J. Lee, P.E., District Permit Engineer

ADA NOTICE: For individuals with sensory disabilities, this document is available in alternate formats. For alternate format information, contact the Forms Management Unit at (916) 445-1233, FM 91 1436 TTY 771, or write to Records and Forms Management, 1120 N Street, MS-89, Sacramento, CA 95814.

A pre-construction meeting with the State's Inspector is required prior to start of any work under this permit. Failure to do so may result in permit cancellation and resubmittal may be required.

The following District Standard Special Provisions are generalizations of the Department Standard Specifications and are included only as a Permittee convenience. Permittee's attention is directed to the current Department Standard Specifications and Encroachment Permit General Provisions (TR-0045) for complete, unabridged, specification requirements.

Once begun, that portion of the work within the State Highway right of way shall be prosecuted to completion as rapidly as possible.

All personnel on foot within the State Highway right of way shall wear personal protective equipment, including safety glasses, hard hats and American National Standards Institute (ANSI) compliant Class II vests. In addition, all personnel working at night, on foot within the State Highway right of way shall wear ANSI Class III warning garments.

The Permittee is responsible for locating and protecting all utilities both underground and aerial. Any costs incurred for locating and protecting and/or relocating any utilities shall be borne by the Permittee.

Permittee is responsible for the actual cost of inspection, which may be more or less than the deposit. A bill or refund shall be sent upon satisfactory completion of the work. Payment of any bill is a condition of the permit.

The State of California, Department of Transportation, makes no assurance or expressed warranty that the plans are complete or that the planned construction fits field conditions. Should additional work or modifications of the work be required in order to meet established Department Standards or in order to fit field conditions, the work shall be performed by Permittee as directed by the State's Inspector at no cost to the State.

All work shall be coordinated with the State highway contractor's operations and under no circumstances shall the work granted herein interfere. All standards of construction shall be identical to similar work performed under adjacent highway contract.

Traffic control when permitted or directed by the State's Inspector, shall consist of closing traffic lanes and shoulders in accordance with attached Caltrans 2018 Standard Plan T9, T10 (Shoulder Closure), Revised Standard Plan (RSP), T13, RSP T13A, RSP T13B, T32, Part 6 "Temporary Traffic Control" of the California Manual on Uniform Traffic Control Devices (California MUTCD) 2014 Revision 6 edition, Section 12 "Temporary Traffic Control" of the current Caltrans Standard Specifications, and these Special Provisions.

If any component in the traffic control system is displaced, or ceases to operate or function as specified, from any cause, during the progress of the work, the Permittee shall immediately repair said component to its original condition or replace said component and shall restore the component to its original location.

Notwithstanding General Provision No. 4, your contractor is required to apply for and obtain an encroachment permit prior to starting work. A fee/deposit of \$1,120.00 is required at the time of application. Also, your contractor must submit proof insurance.

When existing pedestrian facilities are disrupted, closed, or relocated in a Temporary Traffic Control zone, the temporary facilities shall be detectable and include accessibility features consistent with the features present in the existing pedestrian facility as determined by the State's Inspector. Where pedestrians with visual disabilities normally use the closed sidewalk, a barrier that is detectable by a person with a visual disability traveling with the aid of a long cane shall be placed across the full width of the closed sidewalk.

The Permittee shall retain a Civil Engineer, licensed to practice in California, who shall upon completion of the placement or regrading of materials requiring compaction, furnish to the State's Inspector, a report certifying that the compaction work has been accomplished in accordance with Caltrans Standard Specifications and Standard Plans. Compaction testing, in accordance with Caltrans testing procedures and policies, shall be performed by a certified testing laboratory. Copies of the test shall accompany the engineer's report.

All work shall be performed in accordance with the current Department of Transportation Standard Specifications and the Department of Transportation Storm Water Special Provisions for Minimal or No Impact dated May, 2018.

Sidewalk shall be sawcut to an existing expansion joint or scoreline. New concrete shall match existing concrete color, texture and score pattern.

Curbs and gutters shall be installed over 6 inches of Class 2 Aggregate Base. Sidewalks shall be placed over 4 inches of Class 3 Aggregate Subbase.

Pavement shall be sawcut a minimum of 0.2 foot deep prior to paving.

Upon completion of the work provided herein, the Permittee shall complete the "Post Construction Certification" section of the attached Certification of Compliance with Americans with Disabilities Act (ADA) [TR-0405] and submit it to the District 11 Caltrans Permit Office. Encroachment Permit projects that create, alter, or affect pedestrian facilities are required to be designed and constructed in accordance with the policies and standards in Design Information Bulletin 82-06 (DIB 82-06).

Notwithstanding General Provision 24, the Permittee's Contractor's bonds shall remain in full force through completion of the work and acceptance by the Department. Upon fulfillment of all obligations under this permit the Department will notify the Permittee when the Permittee's Contractor's bonds may be released.

The Permittee must provide a minimum of one (1) Portable Changeable Message Sign (PCMS) for each direction of traffic. Additional PCMS(s) must be provided if required by the State's Inspector. PCMS(s) must be placed at locations directed by the State's Inspector and moved or relocated as needed. Each PCMS must comply with the provisions in Section 12-3.32 of the Standard Specifications.

Message to be displayed on the PCMS(s) must be coordinated with the State's Inspector.

All existing planting and irrigation not directly impacted by construction activities shall be protected in place.

Mitigation for any existing landscaping damaged by the Permittee shall be as directed and approved by the State's Inspector. Mitigation may be, but is not limited to replacement planting, irrigation, and a plant establishment period as directed and approved by the State's Inspector.

Prior to any grading, all trees to be removed must be tagged prior to removal. All adjacent trees, not tagged for removal, must be protected in place with ESA fencing placed along the drip line of each tree. Landscape inspector must inspect prior to any grading activities.

Revegetation must comply with all Resource Agency Permits and conditions.

The provisions in this section will not relieve the Permittee from his responsibility to provide additional devices or take such measures as may be necessary for the safety of traffic and the public to comply with the provisions in Section 7-1.04, "Public Safety" of the Standard Specifications.

Upon completion of the work, the attached card shall be completed and returned.

ENCROACHMENT PERMIT GENERAL PROVISIONS

TR – 0045 (REV. 04/2021)

1. **AUTHORITY:** The California Department of Transportation ("Department") has authority to issue encroachment permits under Division 1, Chapter 3, Article 1, Sections 660 through 734 of the Streets and Highways Code.
2. **REVOCATION:** Encroachment permits are revocable on five (5) business days' notice unless otherwise stated on the permit and except as provided by law for public corporations, franchise holders, and utilities. Notwithstanding the foregoing, in an emergency situation as determined by the Department, an encroachment permit may be revoked immediately. These General Provisions and any applicable Special Provisions are subject to modification or abrogation by the Department at any time. Permittees' joint use agreements, franchise rights, reserved rights or any other agreements for operating purposes in State of California ("State") highway right-of-way may be exceptions to this revocation.
3. **DENIAL FOR NONPAYMENT OF FEES:** Failure to pay encroachment permit fees when due may result in rejection of future applications and denial of encroachment permits.
4. **ASSIGNMENT:** This encroachment permit allows only the Permittee or Permittee's authorized agent to work within or encroach upon the State highway right-of-way, and the Permittee may not assign or transfer this encroachment permit. Any attempt to assign or transfer this encroachment permit shall be null and void.
5. **ACCEPTANCE OF PROVISIONS:** Permittee understands and agrees to accept and comply with these General Provisions, the Special Provisions, any and all terms and/or conditions contained in or incorporated into the encroachment permit, and all attachments to the encroachment permit (collectively "the Permit Conditions"), for any encroachment, work, and/or activity to be performed under this encroachment permit and/or under color of authority of this encroachment permit. Permittee understands and agrees the Permit Conditions are applicable to and enforceable against Permittee as long as the encroachment remains in, under, or over any part of the State highway right-of-way.
6. **BEGINNING OF WORK:** When traffic is not impacted (see General Provision Number 35), the Permittee must notify the Department's representative two (2) business days before starting permitted work. Permittee must notify the Department's representative if the work is to be interrupted for a period of five (5) business days or more, unless otherwise agreed upon. All work must be performed on weekdays during regular work hours, excluding holidays, unless otherwise specified in this encroachment permit.
7. **STANDARDS OF CONSTRUCTION:** All work performed within State highway right-of-way must conform to all applicable Departmental construction standards including but not limited to: Standard Specifications, Standard Plans, Project Development Procedures Manual, Highway Design Manual and Special Provisions.
Other than as expressly provided by these General Provisions, the Special Provisions, the Standard Specifications, Standard Plans, and other applicable Departmental standards, nothing in these General Provisions is intended to give any third party any legal or equitable right, remedy, or claim with respect to the encroachment permit and/or to these General Provisions or any provision herein. These General Provisions are for the sole and exclusive benefit of the Permittee and the Department.
Where reference is made in such standards to "Contractor" and "Engineer," these are amended to be read as "Permittee" and "Department's representative," respectively, for purposes of this encroachment permit.
8. **PLAN CHANGES:** Deviations from plans, specifications, and/or the Permit Conditions as defined in General Provision Number 5 are not allowed without prior approval from the Department's representative and the Federal Highway Administration ("FHWA") representative if applicable.
9. **RIGHT OF ENTRY, INSPECTION AND APPROVAL:** All work is subject to monitoring and inspection. The United States, the State, the Department, and the Directors, officers, employees, agents, and/or contractors of the State and/or of the Department, and other state, and federal agencies, and the FHWA, through their agents or representatives, must have full access to highway facilities/encroachment area, at any and all times for the purpose of inspection, maintenance, activities needed for construction/reconstruction, and operation of the State highway right-of-way.
Upon completion of work, Permittee must request a final inspection for acceptance and approval by the Department. The local public agency Permittee must not give final construction approval to its contractor until final acceptance and approval by the Department is obtained.
10. **PERMIT AT WORKSITE:** Permittee must keep the permit package or a copy thereof at the work site at all times and must show it upon request to any Department representative or law enforcement officer. If the permit package, or a copy thereof, is not kept and made available at the work site at all times, the work must be suspended.
11. **CONFLICTING ENCROACHMENTS:** Permittee must yield start of work to ongoing, prior authorized work adjacent to or within the limits of the Permittee's project site. When existing encroachments conflict with Permittee's work, the Permittee must bear all cost for rearrangements (e.g., relocation, alteration, removal, etc.).

ENCROACHMENT PERMIT GENERAL PROVISIONS

12. PERMITS AND APPROVALS FROM OTHER PUBLIC AGENCIES AND/OR ENTITIES: This encroachment permit is invalidated if the Permittee has not obtained all permits and approvals necessary and required by law, including but not limited to permits from the California Public Utilities Commission ("CPUC"), California Occupational Safety and Health Administration ("Cal-OSHA"), and any other public agency and/or entity having jurisdiction. Permittee warrants all such permits and approvals have been obtained before beginning work under this encroachment permit. The Department may, at the Department's discretion, require the Permittee to demonstrate that Permittee has obtained all such permits/approvals, and Permittee shall demonstrate this at the time and in the manner specified by the Department.

13. PEDESTRIAN AND BICYCLIST SAFETY: A safe continuous passageway must be maintained through the work area at existing pedestrian or bicycle facilities. At no time must pedestrians be diverted onto a portion of the street used for vehicular traffic. At locations where safe alternate passageways cannot be provided, appropriate signs and barricades must be installed at the limits of construction and in advance of the limits of construction at the nearest crosswalk or intersection to detour pedestrians to facilities across the street. Attention is directed to Section 7-1.04 "Public Safety," and to Section 12-4.04 "Temporary Pedestrian Access Routes," and to Section 16-2.02 "Temporary Pedestrian Facility," of the Department's Standard Specifications, and to California Vehicle Code section 21760, subdivision (c).

14. PUBLIC TRAFFIC CONTROL: The Permittee must provide traffic control protection, warning signs, lights, safety devices, etc., and take all other measures necessary for the traveling public's safety as required by law and/or the Department. While providing traffic control, the needs of all road users, including but not limited to motorists, bicyclists and pedestrians, including persons with disabilities in accordance with the Americans with Disabilities Act, must be an essential part of the work activity.

Lane, Bike Lane, Sidewalk, Crosswalk, and/or shoulder closures must comply with the Department's Standard Specifications and Standard Plans for Temporary Traffic Control Systems & Temporary Pedestrian Access Routes, and with the applicable Special Provisions. Where issues are not addressed in the Standard Specifications, Standard Plans, and/or Special Provisions, the California Manual on Uniform Traffic Control Devices (Part 6, Temporary Traffic Control) must be followed.

15. MINIMUM INTERFERENCE WITH TRAFFIC: Permittee must plan and conduct work so as to create the least possible inconvenience to the traveling public (motorized vehicles, unmotorized vehicles such as bicycles, pedestrians, person(s) with disabilities, etc.), such that traffic is not unreasonably delayed.

16. STORAGE OF EQUIPMENT AND MATERIALS: The storage of equipment or materials is not allowed within

State highway right-of-way, unless specified within the Special Provisions of this encroachment permit. If encroachment permit Special Provisions allow for the storage of equipment or materials within the State highway right-of-way, the equipment and material storage must also comply with Section 7-1.04, Public Safety, of the Department's Standard Specifications.

17. CARE OF DRAINAGE: Permittee must provide alternate drainage for any work interfering with an existing drainage facility in compliance with the Department's Standard Specifications, Standard Plans, and/or as directed by the Department's representative.

18. RESTORATION AND REPAIRS IN STATE HIGHWAY RIGHT-OF-WAY: Permittee is responsible for restoration and repair of State highway right-of-way resulting from permitted work (Streets and Highways Code, section 670 et seq.).

19. STATE HIGHWAY RIGHT-OF-WAY CLEAN UP: Upon completion of work, Permittee must remove and dispose of all scraps, refuse, brush, timber, materials, etc. off the State highway right-of-way. The aesthetics of the highway must be as it was before work started or better.

20. COST OF WORK: Unless stated otherwise in the encroachment permit or a separate written agreement with the Department, the Permittee must bear all costs incurred for work within the State highway right-of-way and waives all claims for indemnification or contribution from the United States, the State, the Department, and from the Directors, officers, and employees of the State and/or the Department. Removal of Permittee's personal property and improvements shall be at no cost to the United States, the State, and the Department.

21. ACTUAL COST BILLING: When specified in the permit, the Department will bill the Permittee actual costs at the currently set Standard Hourly Rate for encroachment permits.

22. AS-BUILT PLANS: When required, Permittee must submit one (1) set of folded as-built plans within thirty (30) calendar days after completion and acceptance of work in compliance with requirements listed as follows:

- Upon completion of the work provided herein, the Permittee must submit a paper set of As-Built plans to the Department's representative.
- All changes in the work will be shown on the plans, as issued with the permit, including changes approved by Encroachment Permit Rider.
- The plans are to be prominently stamped or otherwise noted "AS-BUILT" by the Permittee's representative who was responsible for overseeing the work. Any original plan that was approved with a Department stamp, or by signature of the Department's representative, must be used for producing the As-Built plans.
- If construction plans include signing or striping, the dates of signing or striping removal, relocation, or installation must be shown on the As-Built plans when required as a condition of the encroachment permit. When the construction plans show signing and striping for staged construction on separate sheets,

ENCROACHMENT PERMIT GENERAL PROVISIONS

the sheet for each stage must show the removal, relocation, and installation dates of the appropriate staged striping and signing.

- e) As-Built plans must contain the Encroachment Permit Number, County, Route, and Post Mile on each sheet.
 - f) The As-Built Plans must not include a disclaimer statement of any kind that differs from the obligations and protections provided by sections 6735 through 6735.6 of the California Business and Professions Code. Such statements constitute non-compliance with Encroachment Permit requirements and may result in the Department retaining Performance Bonds or deposits until proper plans are submitted. Failure to comply may also result in denial of future encroachment permits or a provision requiring a public agency to supply additional bonding.
- 23. PERMITS FOR RECORD PURPOSES ONLY:** When work in the State highway right-of-way is within an area under a Joint Use Agreement (JUA) or a Consent to Common Use Agreement (CCUA), a fee exempt encroachment permit is issued to the Permittee for the purpose of providing a notice and record of work. The Permittee's prior rights must be preserved without the intention of creating new or different rights or obligations. "Notice and Record Purposes Only" must be stamped across the face of the encroachment permit.
- 24. BONDING:** The Permittee must file bond(s), in advance, in the amount(s) set by the Department and using forms acceptable to the Department. The bonds must name the Department as obligee. Failure to maintain bond(s) in full force and effect will result in the Department stopping all work under this encroachment permit and possibly revoking other encroachment permit(s). Bonds are not required of public corporations or privately-owned utilities unless Permittee failed to comply with the provisions and/or conditions of a prior encroachment permit. The surety company is responsible for any latent defects as provided in California Code of Civil Procedure section 337.15. A local public agency Permittee also must comply with the following requirements:
- a) In recognition that project construction work done on State property will not be directly funded and paid by State, for the purpose of protecting stop notice claimants and the interests of State relative to successful project completion, the local public agency Permittee agrees to require the construction contractor to furnish both a payment and performance bond in the local public agency's name with both bonds complying with the requirements set forth in Section 3-1.05 Contract Bonds of the Department's Standard Specifications before performing any project construction work.
 - b) The local public agency Permittee must defend, indemnify, and hold harmless the United States, the State and the Department, and the Directors, officers, and employees of the State and/or Department, from all project construction related claims by contractors, subcontractors, and suppliers, and from all stop notice and/or mechanic's lien claimants. The local public agency also agrees to remedy, in a timely manner and to the Department's satisfaction, any latent defects occurring as a result of the project construction work.
- 25. FUTURE MOVING OF INSTALLATIONS:** Permittee understands and agrees to relocate a permitted installation upon notice by the Department. Unless under prior property right or agreement, the Permittee must comply with said notice at the Permittee's sole expense.
- 26. ENVIRONMENTAL:**
- a) **ARCHAEOLOGICAL/HISTORICAL:** If any archaeological or historical resources are identified or encountered in the work vicinity, the Permittee must immediately stop work, notify the Department's representative, retain a qualified archaeologist who must evaluate the site at Permittee's sole expense, and make recommendations to the Department's representative regarding the continuance of work.
 - b) **HAZARDOUS MATERIALS:** If any hazardous waste or materials (such as underground storage tanks, asbestos pipes, contaminated soil, etc.) are identified or encountered in the work vicinity, the Permittee must immediately stop work, notify the Department's representative, retain a qualified hazardous waste/material specialist who must evaluate the site at the Permittee's sole expense, and make recommendations to the Department's representative regarding the continuance of work. Attention is directed to potential aerially deposited lead (ADL) presence in unpaved areas along highways. It is the Permittee's responsibility to take all appropriate measures to protect workers in conformance with California Code of Regulations Title 8, Section 1532.1, "Lead," and with Cal-OSHA Construction Safety Orders, and to ensure roadway soil management is in compliance with Department of Toxic Substances Control (DTSC) requirements.
 - c) **Biological:** If any regional, state, or federally listed biological resource is identified or encountered in the work vicinity, the Permittee must immediately stop work, notify the Department's representative, retain a qualified biologist who must evaluate the site at Permittee's sole expense, and make recommendations to the Department's representative regarding the continuance of work.
- 27. PREVAILING WAGES:** Work performed by or under an encroachment permit may require Permittee's contractors and subcontractors to pay appropriate prevailing wages as set by the California Department of Industrial Relations. Inquiries or requests for interpretations relative to enforcement of prevailing wage requirements must be directed to the California Department of Industrial Relations.
- 28. LIABILITY, DEFENSE, AND INDEMNITY:** The Permittee agrees to indemnify and save harmless the United States, the State, the Department, and the Directors, officers, employees, agents and/or contractors of the State and/or of the Department, including but not limited to the Director

ENCROACHMENT PERMIT GENERAL PROVISIONS

of Transportation and the Deputy Directors, from any and all claims, demands, damages, costs, liability, suits, or actions of every name, kind, and description, including but not limited to those brought for or on account of property damage, invasion of privacy, violation or deprivation of a right under a state or federal law, environmental damage or penalty, or injury to or death of any person including but not limited to members of the public, the Permittee, persons employed by the Permittee, and/or persons acting on behalf of the Permittee, arising out of or in connection with: (a) the issuance and/or use of this encroachment permit; and/or (b) the encroachment, work, and/or activity conducted pursuant to this encroachment permit, or under color of authority of this encroachment permit but not in full compliance with the Permit Conditions as defined in General Provision Number 5 ("Unauthorized Work or Activity"); and/or (c) the installation, placement, design, existence, operation, and/or maintenance of the encroachment, work, and/or activity; and/or (d) the failure by the Permittee or anyone acting on behalf of the Permittee to perform the Permittee's obligations under any part of the Permit Conditions as defined in General Provision Number 5, in respect to maintenance or any other obligation; and/or (e) any change to the Department's property or adjacent property, including but not limited to the features or conditions of either of them, made by the Permittee or anyone acting on behalf of the Permittee; and/or (f) a defect or obstruction related to or caused by the encroachment, work, and/or activity whether conducted in compliance with the Permit Conditions as defined in General Provision Number 5 or constituting Unauthorized Work or Activity, or from any cause whatsoever. The duty of the Permittee to indemnify and save harmless includes the duties to defend as set forth in Section 2778 of the Civil Code.

It is the intent of the parties that except as prohibited by law, the Permittee will defend, indemnify, and hold harmless as set forth in this General Provision Number 28 regardless of the existence or degree of fault or negligence, whether active or passive, primary or secondary, on the part of: the United States, the State; the Department; the Directors, officers, employees, agents and/or contractors of the State and/or of the Department, including but not limited to the Director of Transportation and the Deputy Directors; the Permittee; persons employed by the Permittee; and/or persons acting on behalf of the Permittee.

The Permittee waives any and all rights to any type of expressed or implied indemnity from or against the United States, the State, the Department, and the Directors, officers, employees, agents, and/or contractors of the State and/or of the Department, including but not limited to the Director of Transportation and the Deputy Directors.

The Permittee understands and agrees to comply with the obligations of Titles II and III of the Americans with Disabilities Act in the conduct of the encroachment, work, and/or activity whether conducted pursuant to this encroachment permit or constituting Unauthorized Work

or Activity, and further agrees to defend, indemnify, and save harmless the United States, the State, the Department, and the Directors, officers, employees, agents, and/or contractors of the State and/or of the Department, including but not limited to the Director of Transportation and the Deputy Directors, from any and all claims, demands, damages, costs, penalties, liability, suits, or actions of every name, kind, and description arising out of or by virtue of the Americans with Disabilities Act.

The Permittee understands and agrees the Directors, officers, employees, agents, and/or contractors of the State and/or of the Department, including but not limited to the Director of Transportation and the Deputy Directors, are not personally responsible for any liability arising from or by virtue of this encroachment permit.

For the purpose of this General Provision Number 28 and all paragraphs herein, "contractors of the State and/or of the Department" includes contractors, and their subcontractors, under contract to the State and/or the Department.

This General Provision Number 28 and all paragraphs herein take effect immediately upon issuance of this encroachment permit, and apply before, during, and after the encroachment, work, and/or activity contemplated under this encroachment permit, whether such work is in compliance with the Permit Conditions as defined in General Provision Number 5 or constitutes Unauthorized Work or Activity, except as otherwise provided by California law. The Permittee's obligations to defend, indemnify, and save harmless under this General Provision Number 28 take effect immediately upon issuance of this encroachment permit and have no expiration date, including but not limited to situations in which this encroachment permit expires or is revoked, the work or activity performed under this encroachment permit is accepted or not accepted by the Department, the encroachment, work, and/or activity is conducted in compliance with the Permit Conditions as defined in General Provision Number 5 or constitutes Unauthorized Work or Activity, and/or no work or activity is undertaken by the Permittee or by others on the Permittee's behalf.

If the United States or an agency, department, or board of the United States is the Permittee, the first two paragraphs of this General Provision Number 28 (beginning "The Permittee agrees to indemnify..." and "It is the intent of the parties...") are replaced by the following paragraph:

Claims for personal injury, death, or property damage allegedly caused by the negligent or wrongful act or omission of any employee of the United States acting within the scope of their official duties are subject to the Federal Tort Claims Act, as amended, 28 U.S.C. § 1346 and § 2671 et seq. (Chapter 171).

29. **NO PRECEDENT ESTABLISHED:** This encroachment permit is issued with the understanding that it does not establish a precedent.
30. **FEDERAL CIVIL RIGHTS REQUIREMENTS FOR PUBLIC ACCOMMODATION:**

ENCROACHMENT PERMIT GENERAL PROVISIONS

- a) As part of the consideration for being issued this encroachment permit, the Permittee, on behalf of Permittee and on behalf of Permittee's personal representatives, successors in interest, and assigns, does hereby covenant and agree that:
- No person on the grounds of race, color, or national origin may be excluded from participation in, be denied the benefits of, or be otherwise subjected to discrimination in the use of said facilities.
 - That in connection with the construction of any improvements on said lands and the furnishings of services thereon, no discrimination must be practiced in the selection and retention of first-tier subcontractors in the selection of second-tier subcontractors.
 - That such discrimination must not be practiced against the public in their access to and use of the facilities and services provided for public accommodations (such as eating, sleeping, rest, recreation), and operation on, over, or under the space of the State highway right-of-way.
 - That the Permittee must use the premises in compliance with all other requirements imposed pursuant to Title 15, Code of Federal Regulations, Commerce and Foreign Trade, Subtitle A. Office of the Secretary of Commerce, Part 8 (15 C.F.R. Part 8) and as said Regulations may be amended.
- b) That in the event of breach of any of the above nondiscrimination covenants, the State and the Department have the right to terminate this encroachment permit and to re-enter and repossess said land and the facilities thereon and hold the same as if said permit had never been made or issued.
31. **MAINTENANCE:** The Permittee is responsible at Permittee's sole expense for the encroachment, and the inspection, maintenance, repair, and condition thereof, so that it does not negatively impact State highway safety, maintenance, operations, construction, activities needed for construction/reconstruction, State facilities, or other encroachments. Additional permits or approval documents may be required authorizing additional work related to inspection, repair, and/or maintenance activities.
32. **SPECIAL EVENTS:** In accordance with subdivision (a) of Streets and Highways Code section 682.5 and 682.7, the Department is not responsible for the conduct or operation of the permitted activity, and the applicant agrees to defend, indemnify, and hold harmless the United States, the State, the Department, and the Directors, officers, employees, agents, and contractors of the State and/or of the Department, including but not limited to the Director of Transportation and the Deputy Directors, from any and all claims, demands, damages, costs, liability, suits, or actions of every name, kind and description arising out of any activity for which this encroachment permit is issued.

The Permittee is required, as a condition of this encroachment permit, for any event that awards prize compensation to competitors in gendered categories, for any participant level that receives prize compensation, to ensure the prize compensation for each gendered category is identical at each participant level. (Streets and Highways Code, section 682.7.)

The Permittee understands and agrees to comply with the obligations of Titles II and III of the Americans with Disabilities Act in the conduct of the event, and further agrees to defend, indemnify, and save harmless the United State, the State and the Department, and the Directors, officers, and employees of the State and/or Department, including but not limited to the Director of the Department and the Deputy Directors, from any and all claims, demands, damages, costs, liability, suits, or actions of every name, kind and description arising out of or by virtue of the Americans with Disabilities Act.

33. **PRIVATE USE OF STATE HIGHWAY RIGHT-OF-WAY:** State highway right-of-way must not be used for private purposes without compensation to the State. The gifting of public property uses and therefore public funds is prohibited under the California Constitution, Article XVI, Section 6.
34. **FIELD WORK REIMBURSEMENT:** Permittee must reimburse the Department for field work performed on Permittee's behalf to correct or remedy hazards or damaged facilities, or to clear refuse, debris, etc. not attended to by the Permittee.
35. **LANE CLOSURE REQUEST SUBMITTALS AND NOTIFICATION OF CLOSURES TO THE DEPARTMENT:** Lane closure request submittals and notifications must be in accordance with Section 12-4.02, and Section 12.4-04, of the Department's Standard Specifications or as directed by the Department's representative. The Permittee must notify the Department's representative and the Traffic Management Center ("TMC") before initiating a lane closure or conducting an activity that may cause a traffic impact. In emergency situations when the corrective work or the emergency itself may affect traffic, the Department's representative and the TMC must be notified as soon as possible.
36. **SUSPENSION OF TRAFFIC CONTROL OPERATION:** The Permittee, upon notification by the Department's representative, must immediately suspend all traffic lane, bike lane, sidewalk, crosswalk, and/or shoulder closure operations and any operation that impedes the flow of traffic. All costs associated with this suspension must be borne by the Permittee.
37. **UNDERGROUND SERVICE ALERT (USA) NOTIFICATION:** Any excavation requires compliance with the provisions of Government Code section 4216 et seq., including but not limited to notice to a regional notification center, such as Underground Service Alert (USA). The Permittee must provide notification to the Department representative at least five (5) business days before, and the regional notification center at least forty-

ENCROACHMENT PERMIT GENERAL PROVISIONS

eight (48) hours before, performing any excavation work within the State highway right-of-way.

38. **COMPLIANCE WITH THE AMERICANS WITH DISABILITIES ACT (ADA):** All work within the State highway right-of-way to construct and/or maintain any public facility must be designed, maintained, and constructed strictly in accordance with all applicable Federal Access laws and regulations (including but not limited to Section 504 of the Rehabilitation Act of 1973, codified at 29 U.S.C. § 794), California Access laws and regulations relating to ADA, along with its implementing regulations, Title 28 of the Code of Federal Regulations Parts 35 and 36 (28 C.F.R., Ch. I, Part 35, § 35.101 et seq., and Part 36, § 36.101 et seq.), Title 36 of the Code of Federal Regulations Part 1191 (36 C.F.R., Ch. XI, Part 1191, § 1191.1 et seq.), Title 49 of the Code of Federal Regulations Part 37 (49 C.F.R., Ch. A, Part 37, § 37.1 et seq.), the United States Department of Justice Title II and Title III for the ADA, and California Government Code section 4450 et seq., which require public facilities be made accessible to persons with disabilities.

Notwithstanding the requirements of the previous paragraph, all construction, design, and maintenance of public facilities must also comply with the Department's

Design Information Bulletin 82, "Pedestrian Accessibility Guidelines for Highway Projects" and Standard Plans & Specifications on "Temporary Pedestrian Access Routes."

39. **STORMWATER:** The Permittee is responsible for full compliance with the following:
- a) For all projects, the Department's Storm Water Program and the Department's National Pollutant Discharge Elimination System (NPDES) Permit requirements under Order No. 2012-0011-DWQ, NPDES No CAS000003; and
 - b) In addition, for projects disturbing one acre or more of soil, with the California Construction General Permit Order No. 2009-0009-DWQ, NPDES No CAS000002; and
 - c) In addition, for projects disturbing one acre or more of soil in the Lahontan Region with Order No. R6T-2016-0010, NPDES No CAG616002.
 - d) For all projects, it is the Permittee's responsibility to install, inspect, repair, and maintain all facilities and devices used for water pollution control practices (Best Management Practices/BMPs) before performing daily work activities.


DIST	COUNTY	ROUTE	POST MILES TOTAL PROJECT	SHEET TOTAL NO. SHEETS
<i>Atif Feroz</i> REGISTERED CIVIL ENGINEER				
May 31, 2018 PLANS APPROVAL DATE				
THE STATE OF CALIFORNIA OR ITS OFFICERS OR AGENTS SHALL NOT BE RESPONSIBLE FOR THE ACCURACY OR COMPLETENESS OF SCANNED COPIES OF THIS PLAN SHEET.				
				

TABLE 1

TAPER LENGTH CRITERIA AND CHANNELIZING DEVICE SPACING							
SPEED (S)	MINIMUM TAPER LENGTH * FOR WIDTH OF OFFSET 12 FEET (W)				MAXIMUM CHANNELIZING DEVICE SPACING		
	TANGENT 2L	MERGING L	SHIFTING L/2	SHOULDER L/3	X	Y	Z **
					TAPER	TANGENT	CONFLICT
mph	ft	ft	ft	ft	ft	ft	ft
20	160	80	40	27	20	40	10
25	250	125	63	42	25	50	12
30	360	180	90	60	30	60	15
35	490	245	123	82	35	70	17
40	640	320	160	107	40	80	20
45	1080	540	270	180	45	90	22
50	1200	600	300	200	50	100	25
55	1320	660	330	220	50	100	25
60	1440	720	360	240	50	100	25
65	1560	780	390	260	50	100	25
70	1680	840	420	280	50	100	25
75	1800	900	450	300	50	100	25

* - For other offsets, use the following merging taper length formula for L:
 For speed of 40 mph or less, $L = WS^2/60$
 For speed of 45 mph or more, $L = WS$

Where: L = Taper length in feet

W = Width of offset in feet

S = Posted speed limit, off-peak 85th-percentile
 speed prior to work starting, or the anticipated
 operating speed in mph

** - Use for taper and tangent sections where there are no pavement markings or where
 there is a conflict between existing pavement markings and channelizers (CA).

TABLE 2

LONGITUDINAL BUFFER SPACE AND FLAGGER STATION SPACING				
SPEED *	Min D **	DOWNGRADE Min D ***		
		-3%	-6%	-9%
		ft	ft	ft
mph	ft	ft	ft	ft
20	115	116	120	126
25	155	158	165	173
30	200	205	215	227
35	250	257	271	287
40	305	315	333	354
45	360	378	400	427
50	425	446	474	507
55	495	520	553	593
60	570	598	638	686
65	645	682	728	785
70	730	771	825	891
75	820	866	927	1003

* - Speed is posted speed limit, off-peak 85th-percentile
 speed prior to work starting, or the anticipated
 operating speed in mph

** - Longitudinal buffer space or flagger station spacing

*** - Use on sustained downgrade steeper than -3 percent
 and longer than 1 mile.

TABLE 3

ADVANCE WARNING SIGN SPACING			
ROAD TYPE	DISTANCE BETWEEN SIGNS *		
	A	B	C
	ft	ft	ft
URBAN - 25 mph OR LESS	100	100	100
URBAN - MORE THAN 25 mph TO 40 mph	250	250	250
URBAN - MORE THAN 40 mph	350	350	350
RURAL	500	500	500
EXPRESSWAY / FREEWAY	1000	1500	2640

* - The distances are approximate, are intended for guidance
 purposes only, and should be applied with engineering judgment.
 These distances should be adjusted by the Engineer for field
 conditions, if necessary, by increasing or decreasing the
 recommended distances.

STATE OF CALIFORNIA
 DEPARTMENT OF TRANSPORTATION

TRAFFIC CONTROL SYSTEM TABLES FOR LANE AND RAMP CLOSURES

NO SCALE

T9

Return to Table of Contents

NOTES:

See Standard Plan T9 for tables.

Use cone spacing X for taper segment, Y for tangent segment or Z for conflict situations, as appropriate, per Table 1, unless X, Y, or Z cone spacing is shown on this sheet.

Provide at least one person to continuously maintain traffic control devices for lane closures.

DIST	COUNTY	ROUTE	POST MILES TOTAL PROJECT	SHEET NO.	TOTAL SHEETS

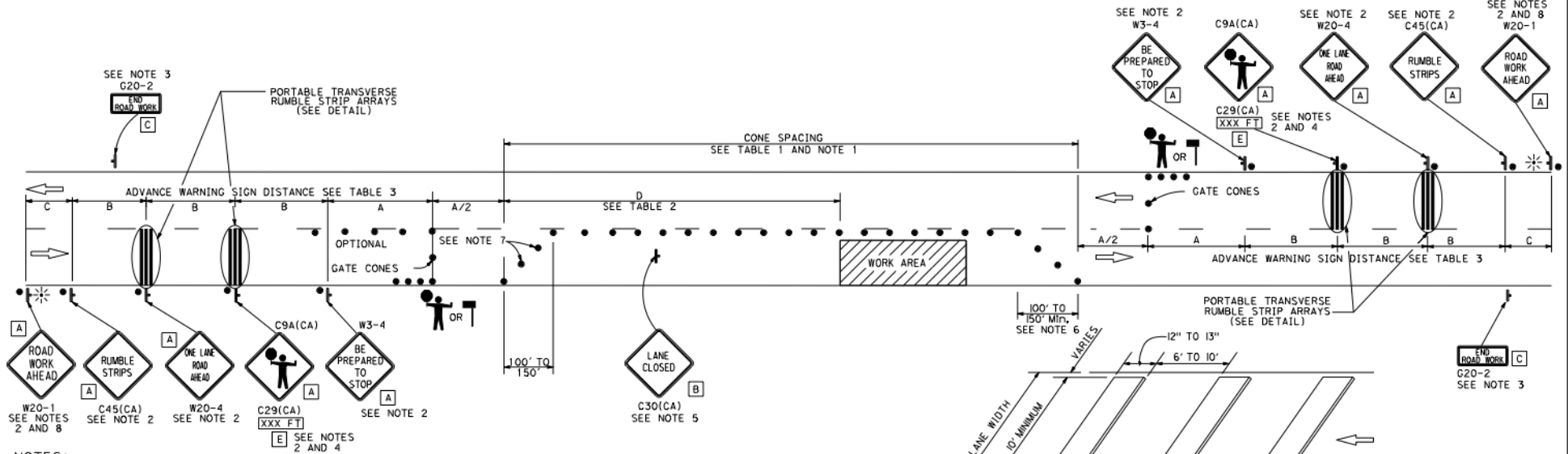
Atifa Ferrouz
REGISTERED CIVIL ENGINEER

April 16, 2021
PLANS APPROVAL DATE

Atifa Ferrouz
No. C80402
Exp. 3-31-23
CIVIL
STATE OF CALIFORNIA

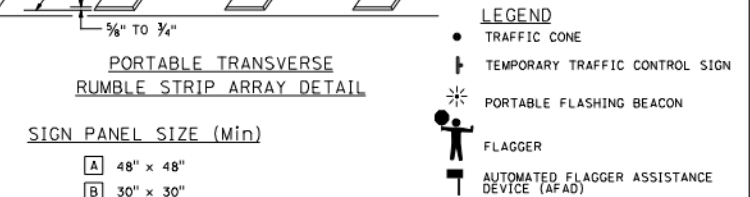
THE STATE OF CALIFORNIA OR ITS OFFICERS OR AGENTS SHALL NOT BE RESPONSIBLE FOR THE ACCURACY OR COMPLETENESS OF SCANNED COPIES OF THIS PLAN SHEET.

TO ACCOMPANY PLANS DATED _____



NOTES:

1. Portable delineators placed at one-half the spacing indicated for traffic cones may be used instead of cones for daytime closures only.
2. Sign must be equipped with at least two flags for daytime closures. Flags must be orange in color and at least 16 inches by 16 inches in size. Place flashing beacons as shown for closures during hours of darkness.
3. A G20-2 "END ROAD WORK" sign, shall be placed at the end of the lane closure unless the end of work area is obvious or ends within the larger project's limits.
4. An optional C29(CA) sign may be placed below the C9A(CA) sign.
5. Place C30(CA) "LANE CLOSED" sign at 500' to 1000' intervals throughout extended work area. They are optional if the work area is visible from the flagger station.
6. Length may be reduced by the Engineer to address site conditions.
7. Either traffic cones or barricades shall be placed on the taper. Barricades shall be Type I, II, or III.
8. If C45(CA) is not used, measure distance C from W20-4.



STATE OF CALIFORNIA DEPARTMENT OF TRANSPORTATION **TRAFFIC CONTROL SYSTEM WITH REVERSIBLE CONTROL ON TWO LANE CONVENTIONAL HIGHWAYS**

NO SCALE
RSP T13 DATED APRIL 16, 2021 SUPERSEDES RSP T13 DATED OCTOBER 18, 2019 AND
STANDARD PLAN T13 DATED MAY 31, 2018 - PAGE 291 OF THE STANDARD PLANS BOOK DATED 2018.

REVISED STANDARD PLAN RSP T13

2018 REVISED STANDARD PLAN RSP T13

LEGEND:

- TRAFFIC CONE
- ⚡ TEMPORARY TRAFFIC CONTROL SIGN
- ☀ PORTABLE FLASHING BEACON
- 🚚 TRAILER
- 🚧 FLAGGER
- PCMS PORTABLE CHANGEABLE MESSAGE SIGN

SIGN PANEL SIZE (Min):

A 48" x 48"

**FLAGGER
AHEAD**

**PREPARE
TO STOP**

DIST	COUNTY	ROUTE	POST MILES	SHEET	TOTAL
			TOTAL PROJECT	NO.	SHEETS

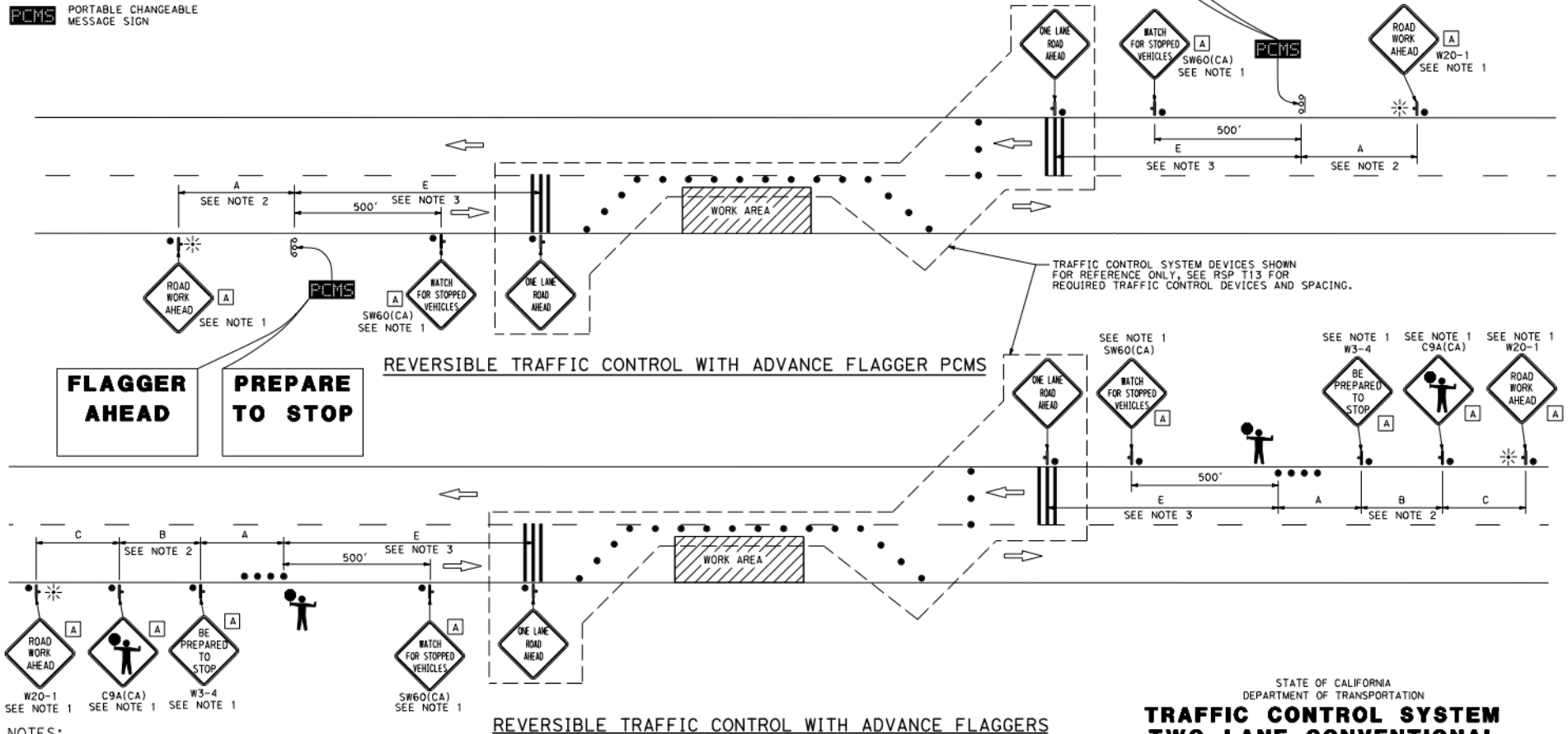
Atifa Ferrouz
REGISTERED CIVIL ENGINEER

April 16, 2021
PLANS APPROVAL DATE

Atifa Ferrouz
C80402
3-31-23
CIVIL
STATE OF CALIFORNIA

THE STATE OF CALIFORNIA OR ITS OFFICERS OR AGENTS SHALL NOT BE RESPONSIBLE FOR THE ACCURACY OR COMPLETENESS OF SCANNED COPIES OF THIS PLAN SHEET.

TO ACCOMPANY PLANS DATED _____



NOTES:

- Sign must be equipped with at least two flags for daytime closures. Flags must be orange in color and at least 16 inches by 16 inches in size. Place flashing beacons as shown for closures during hours of darkness.
- See Standard Plan T9, Table 3 for advanced warning sign spacing.
- See Standard Specification 12-4.02C.

STATE OF CALIFORNIA
DEPARTMENT OF TRANSPORTATION
**TRAFFIC CONTROL SYSTEM
TWO LANE CONVENTIONAL
HIGHWAYS**
NO SCALE

RSP T13A DATED APRIL 16, 2021 SUPPLEMENTS THE STANDARD PLANS BOOK DATED 2018.

REVISED STANDARD PLAN RSP T13A

2018 REVISED STANDARD PLAN RSP T13A

DIST	COUNTY	ROUTE	POST MILES TOTAL PROJECT	SHEET NO.	TOTAL SHEETS

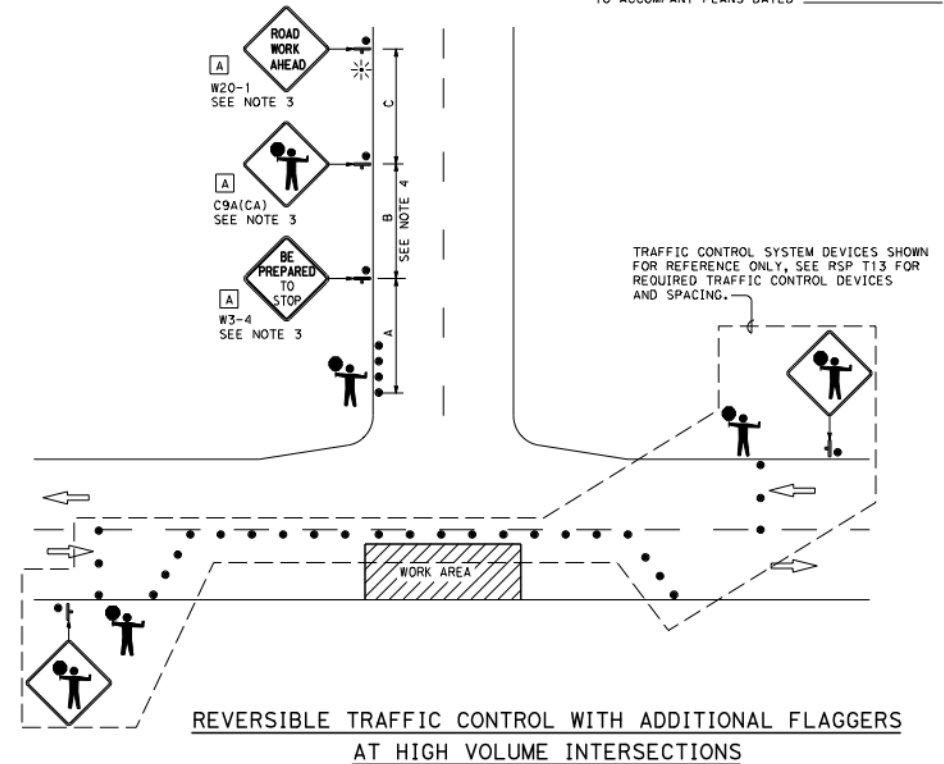
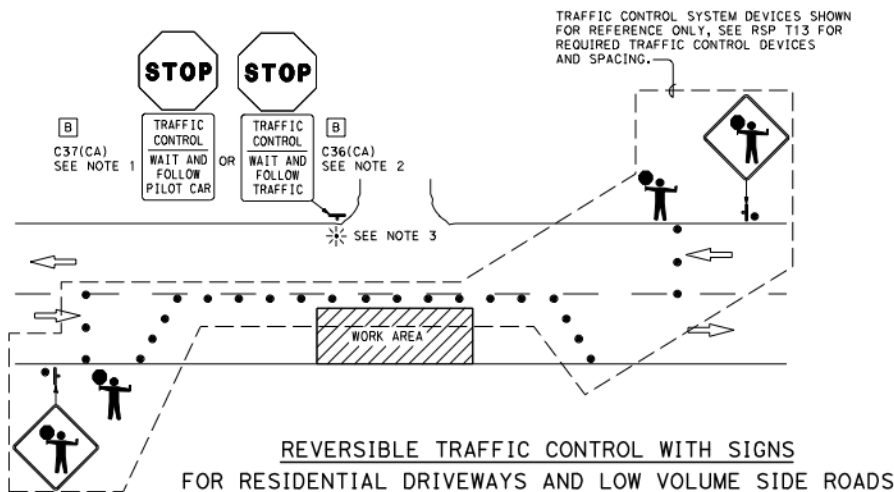
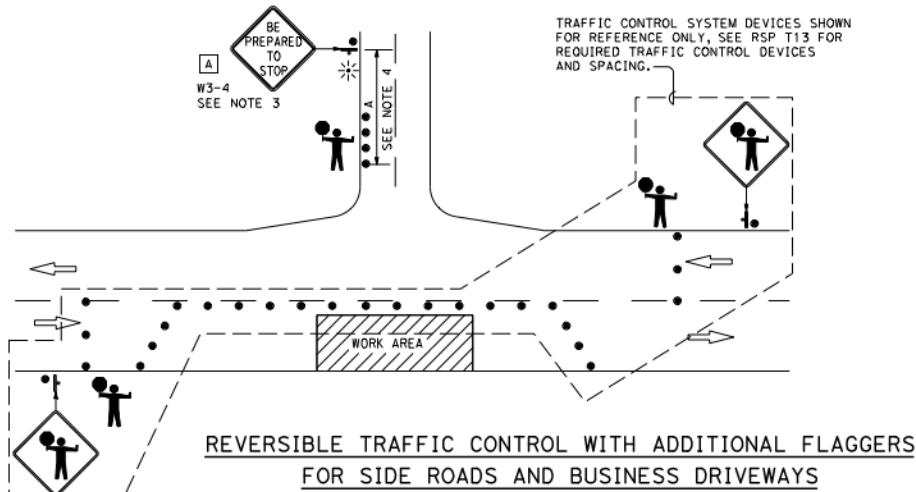
Atifa Ferouz
REGISTERED CIVIL ENGINEER

April 16, 2021
PLANS APPROVAL DATE

Atifa Ferouz
No. C80402
Exp. 3-31-23
CIVIL
STATE OF CALIFORNIA

THE STATE OF CALIFORNIA OR ITS OFFICERS
OR AGENTS SHALL NOT BE RESPONSIBLE FOR
THE ACCURACY OR COMPLETENESS OF SCANNED
COPIES OF THIS PLAN SHEET.

TO ACCOMPANY PLANS DATED _____



NOTES:

1. Place C37(CA) sign when pilot car is used.
2. Place C36(CA) sign when pilot car is not used.
3. Sign must be equipped with at least two flags for daytime closures. Flags must be orange in color and at least 16 inches by 16 inches in size. Place flashing beacons as shown for closures during hours of darkness.
4. See Standard Plan T9, Table 3 for advance warning sign spacing.

LEGEND:

- TRAFFIC CONE
- ⌋ TEMPORARY TRAFFIC CONTROL SIGN
- ⚡ PORTABLE FLASHING BEACON
- ⤴ FLAGGER

SIGN PANEL SIZE (Min)

- A 48" x 48"
- B 36" x 42"

STATE OF CALIFORNIA
DEPARTMENT OF TRANSPORTATION

**TRAFFIC CONTROL SYSTEM
TWO LANE CONVENTIONAL HIGHWAYS**

NO SCALE

RSP T13B DATED APRIL 16, 2021 SUPPLEMENTS THE STANDARD PLANS BOOK DATED 2018.

REVISED STANDARD PLAN RSP T13B

2018 REVISED STANDARD PLAN RSP T13B

10-15-20

NOTES:

1. Only signs related to pedestrians are shown. For all other signs see appropriate T-sheets.
2. Barricades closing sidewalk shall cover the full width of the sidewalk. Use R9-11 sign when there are destination points between the detour and the work area. Locate the R9-11 sign to allow pedestrian access.
3. Advance warning sign is not required if the work area is within the limits of a larger work zone. Sign shall be equipped with at least two flags for daytime closure. Each flag shall be orange or fluorescent red-orange in color.

NOTES:

See Standard Plan T9 for tables.

Use cone spacing X for taper segment, Y for tangent segment or Z for conflict situations, as appropriate, per Table 1 unless X, Y, or Z cone spacing is shown on this sheet.

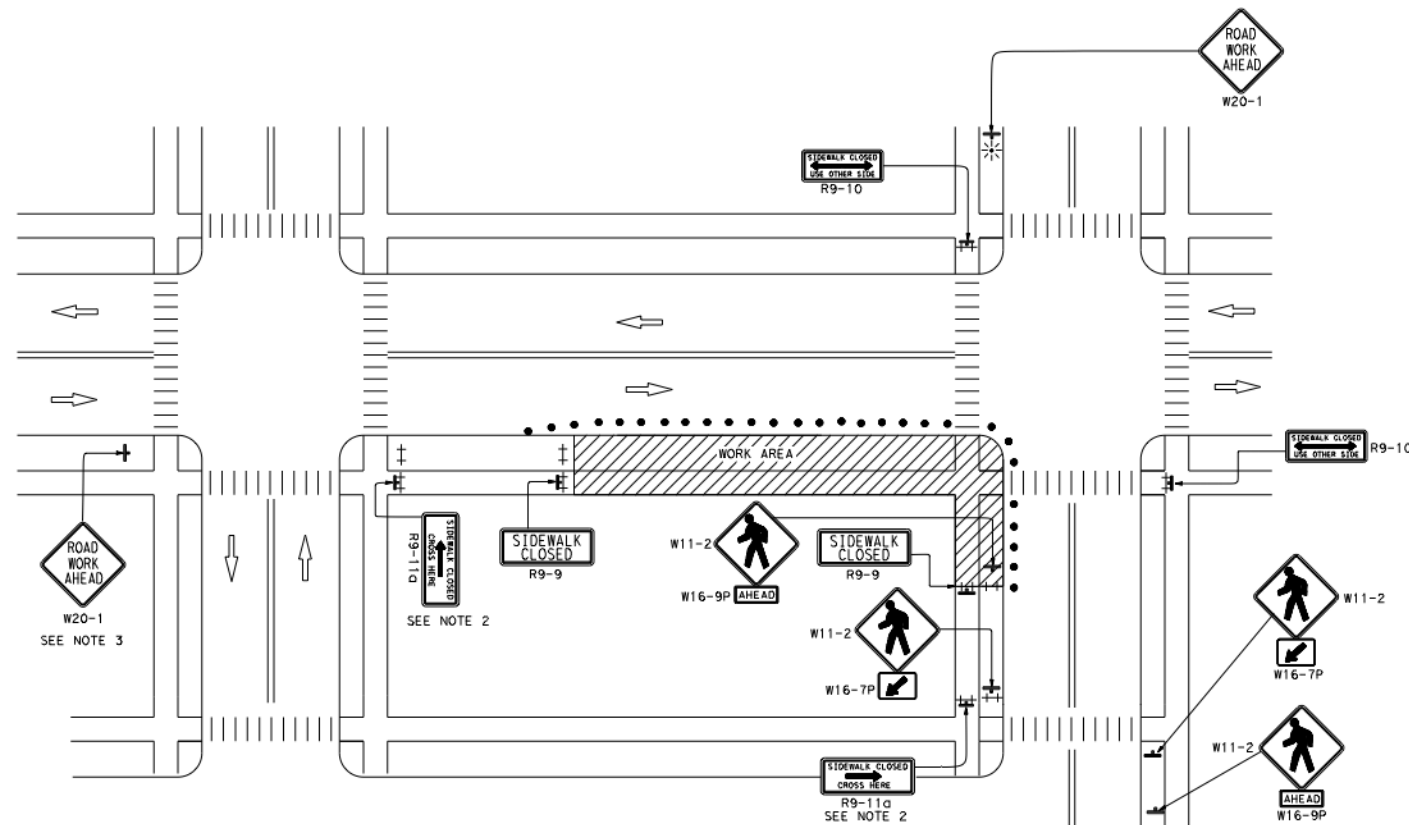
DIST	COUNTY	ROUTE	POST MILES TOTAL PROJECT	SHEET NO.	TOTAL SHEETS

Atifa Ferrouz
REGISTERED CIVIL ENGINEER

May 31, 2018
PLANS APPROVAL DATE

THE STATE OF CALIFORNIA OR ITS OFFICERS
OR AGENTS SHALL NOT BE RESPONSIBLE FOR
THE ACCURACY OR COMPLETENESS OF SCANNED
COPIES OF THIS PLAN SHEET.

Atifa Ferrouz
No. C80402
Exp. 3-31-19
CIVIL
STATE OF CALIFORNIA

**LEGEND:**

- † BARRICADE
- TRAFFIC CONE
- ★ PORTABLE FLASHING BEACON
- † TEMPORARY TRAFFIC CONTROL SIGN
- † TEMPORARY TRAFFIC CONTROL SIGN ON BARRICADE

SIGN PANEL SIZE (Min)

SIGN DESIGNATION	SIGN OR PLAQUE	SIGN SIZE
R9-9	SIDEWALK CLOSED	24" x 12"
R9-10	SIDEWALK CLOSED USE OTHER SIDE	24" x 12"
R9-11	SIDEWALK CLOSED AHEAD CROSS HERE	24" x 18"
R9-11a	SIDEWALK CLOSED CROSS HERE	24" x 12"
W11-2	PEDESTRIAN	36" x 36"
W16-7P	DIAGONAL DOWNWARD POINTING ARROW (PLAQUE)	24" x 12"
W16-9P	AHEAD (PLAQUE)	24" x 12"
W20-1	ROAD WORK AHEAD	36" x 36"

STATE OF CALIFORNIA
DEPARTMENT OF TRANSPORTATION

TEMPORARY PEDESTRIAN ACCESS ROUTES TYPICAL SIDEWALK/CROSSWALK CLOSURE AND PEDESTRIAN DETOUR

NO SCALE

T32

Chart No. <u>1</u> <u>Complete City Street Closure Hours</u>																									
Location: SD										Direction: NB - SB															
Closure limits: Howard Ave. At Iris Ave.																									
Hou	00	01	02	03	04	05	06	07	08	09	10	11	12	13	14	15	16	17	18	19	20	21	22	23	24
Mon– Thu	R	R	R	R	R						R	R	R	R	R	R						R	R	R	R
Fri	R	R	R	R	R						R	R	R	R	R	R									
Sat																									
Sun																						R	R	R	R
Legend: <div style="border: 1px solid black; padding: 2px; display: inline-block; width: 20px; text-align: center;">R</div> Provide at least 1 through traffic lane not less than 10 feet in width for use by both directions of travel.																									
REMARKS: <p>NOTE: When Reverse Traffic Control is used:</p> <ol style="list-style-type: none"> 1. Close one traffic lane and stop public traffic for periods not to exceed ten minutes. 2. Maximum length of one-way control between flaggers shall be (0.10) mi. <p>NOTE: Place a PCMS (Portable Changeable Message Sign) on NB-SB-EB-WB – warning the public of the road closure ahead</p>																									

Permit # 0067-(11-21-NCS)-SPSALEM-01-31-2022

HOWARD AVE – VILLAGE PINE TO IRIS SIDEWALK

CONTRACTOR'S RESPONSIBILITIES

- PURSUANT TO SECTION 426 OF THE CALIFORNIA GOVERNMENT CODE, AT LEAST 2 WORKING DAYS PRIOR TO EXCAVATION, YOU MUST CONTACT THE REGIONAL NOTIFICATION CENTER (E.G., UNDERGROUND SERVICE ALERT OF SOUTHERN CALIFORNIA) AND OBTAIN AN INQUIRY IDENTIFICATION NUMBER.
- NOTIFY SDG&E AT LEAST 10 WORKING DAYS PRIOR TO EXCAVATING WITHIN 10' OF SDG&E UNDERGROUND HIGH VOLTAGE TRANSMISSION POWER LINES (U.L., 69 KV & HIGHER).

CONSTRUCTION STORM WATER PROTECTION NOTES

- TOTAL SITE DISTURBANCE AREA (ACRES) 0.16
HYDROLOGIC UNIT / WATERSHED TUJANA MOUNTAIN / TUJANA RIVER WATERSHED
HYDROLOGIC SUBAREA NAME & NO. SAN YSIDRO RILL
- THE CONTRACTOR SHALL COMPLY WITH THE REQUIREMENTS OF THE
☒ WPCP
 THE PROJECT IS SUBJECT TO MUNICIPAL STORM WATER PERMIT NO. R9-2013-0001 AS AMENDED BY R9-2015-0001 AND R9-2015-0100
☐ SWPPP
 THE PROJECT IS SUBJECT TO MUNICIPAL STORM WATER PERMIT NO. R9-2013-0001 AS AMENDED BY R9-2015-0001 AND R9-2015-0100 AND CONSTRUCTION GENERAL PERMIT ORDER 2009-0009-DWO AS AMENDED BY ORDER 2009-0004-DWO AND 2012-0006-DWO
 TRADITIONAL RISK LEVEL ☐ 1 ☐ 2 ☐ 3
 LUP RISK TYPE ☐ 1 ☐ 2 ☐ 3
- CONSTRUCTION SITE PRIORITY
☐ ASBS ☐ HIGH ☐ MEDIUM ☒ LOW

PERMANENT STORM WATER BMP CATEGORY

- ☐ PRIORITY DEVELOPMENT PROJECT
☐ STANDARD DEVELOPMENT PROJECT
☐ PDP EXEMPT
☐ NOT SUBJECT TO PERMANENT STORM WATER REQUIREMENTS

MONUMENTATION SURVEY NOTES

THIS MAP WAS CREATED FROM A PARCEL LAYER AND DOES NOT DEPICT THE ACTUAL LOCATION OF THE PROPERTY LINES. NO BOUNDARY ANALYSIS WAS PERFORMED. THE SURVEY MONUMENTS HAVE BEEN LOCATED BY SURVEY GRADE MEASUREMENTS, AND ARE SHOWN FOR INFORMATIONAL PURPOSES ONLY.

THE CITY OF SAN DIEGO LAND SURVEYORS SHALL REPLACE SUCH MONUMENTS WITH APPROPRIATE MONUMENTS. WHEN SETTING SURVEY MONUMENTS USED FOR RE-ESTABLISHMENT OF THE DISTURBED CONTROLLING SURVEY MONUMENTS AS REQUIRED BY SECTIONS 6730.2 AND 8771 OF THE BUSINESS AND PROFESSIONS CODE OF THE STATE OF CALIFORNIA, A CORNER RECORD OR RECORD OF SURVEY, AS APPROPRIATE, SHALL BE FILED WITH THE COUNTY SURVEYOR.

IF ANY HORIZONTAL OR VERTICAL CONTROL IS TO BE DISTURBED OR DESTROYED, THE CITY OF SAN DIEGO FIELD SURVEY SECTION SHALL BE NOTIFIED IN WRITING AT LEAST 7 DAYS PRIOR TO CONSTRUCTION. THE CONTRACTOR SHALL BE RESPONSIBLE FOR THE COST OF REPLACING ANY HORIZONTAL CONTROL AND VERTICAL CONTROL BENCHMARKS DESTROYED BY THE CONSTRUCTION IF THE CITY OF SAN DIEGO SURVEY SECTIONS IS NOT NOTIFIED PRIOR TO CONSTRUCTION. THE FILING OF A CORNER RECORD OR RECORD OF SURVEY, AS APPROPRIATE, SHALL BE FILED WITH COUNTY SURVEYOR. A COPY OF THE FIELD DOCUMENT SHALL BE FURNISHED TO THE CITY OF SAN DIEGO SURVEY SECTION.

ABBREVIATIONS

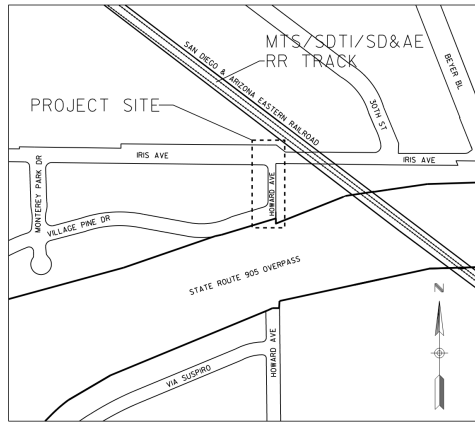
AB	ABANDON	EB	ENCASED BURIED	OH	OVER HEAD
ALG	ALIGNMENT	EL	ELEVATION	PROP	PROPOSED
BFP	BACK FLOW PREVENTER	ELEC	ELECTRIC	PRPB	PEDESTRIAN PUSH BUTTON
BTWN	BETWEEN	EX	EXISTING	SD&AE	SAN DIEGO & ARIZONA
CATV	CABLE TV	FH	FIRE HYDRANT	SDT	SAN DIEGO TROLLEY INC.
C	CENTER LINE	FL	FLOW LINE	SWR	SEWER
COND	CONDUIT	FS	FIRE SERVICE	TEL	TELEPHONE
CONT	CONTINUED	HP	HIGH PRESSURE	UNK	UNKNOWN
CONTR	CONTRACTOR	IE	INVERT ELEVATION	WM	WATER METER
DB	DIRECT BURIED	MTD	MULTIPLE TELEPHONE DUCT	WTR	WATER
DI	DUCTILE IRON	MTS	SAN DIEGO METROPOLITAN TRANSIT SYSTEM		

DISCIPLINE CODE

- G GENERAL
 D DEMOLITION
 C CIVIL
 E ELECTRICAL

SHEET INDEX

SHEET NO.	DISCIPLINE CODE	TITLE	LIMITS
1	G-1	COVER SHEET	HOWARD AVE AND IRIS AVE
2	G-2	NOTES	HOWARD AVE AND IRIS AVE
3	D-1	DEMOLITION PLAN	HOWARD AVE AND IRIS AVE
4	C-1	IMPROVEMENT PLAN	HOWARD AVE AND IRIS AVE
5	C-2	BMP MAP FOR STANDARD PROJECT	HOWARD AVE AND IRIS AVE
6	C-3	SIGNING & STRIPING	HOWARD AVE AND IRIS AVE
7	C-4	ALIGNMENT REPORTS	HOWARD AVE AND IRIS AVE
8	E-1	TRAFFIC SIGNAL MODIFICATION	HOWARD AVE AND IRIS AVE



KEY MAP
NO SCALE

TRAFFIC CONTROL NOTES:

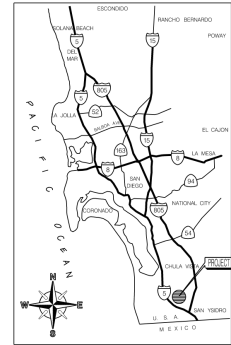
THE CONTRACTOR SHALL, PER SECTION 601.7 OF THE CONTRACT SPECIAL PROVISIONS, PREPARE TRAFFIC CONTROL WORKING DRAWINGS AND SUBMIT THEM TO THE RESIDENT ENGINEER. THE WORKING DRAWINGS WILL BE SENT TO THE ENGINEERING TRAFFIC CONTROL SECTION FOR REVIEW AND APPROVAL. THE CONTRACTOR SHALL ALLOW A MINIMUM OF 20 WORKING DAYS FOR REVIEW OF THE WORKING DRAWINGS. UPON APPROVAL OF THE TRAFFIC CONTROL PLAN, THE ENGINEERING TRAFFIC CONTROL SECTION WILL ISSUE A TRAFFIC CONTROL PLAN (TCP) PERMIT. WORK SHALL NOT BEGIN IN THE PUBLIC RIGHT OF WAY WITHOUT THE APPROVED TCP PERMIT.

LANDSCAPING NOTES

REVEGETATE SLOPE AS INDICATED IN SPECIAL PROVISIONS.

WORK TO BE DONE

THE IMPROVEMENTS CONSIST OF THE FOLLOWING WORK:
 INSTALL NEW SIDEWALK, CURB RAMPS,
 DRIVEWAYS, STRIPING, AND TRAFFIC SIGNAL MODIFICATION.
 ALL WORK TO BE DONE ACCORDING TO THE PLANS,
 STANDARD SPECIFICATIONS, AND THE STANDARD
 DRAWINGS OF THE CITY OF SAN DIEGO.



VICINITY MAP
NOT TO SCALE

TOPOGRAPHIC SOURCE

BASED ON FIELD SURVEY DATA PERFORMED BY THE CITY OF SAN DIEGO SURVEYING DIVISION ON JANUARY 4, 2018, WORK ORDER NO. B-18019.

STREET CLASSIFICATION

STREET NAME: HOWARD AVE
 COLLECTOR, ADT=4,398

STREET NAME: IRIS AVE
 COLLECTOR, ADT=7,045

REFERENCES:

CITY DRAWING: 13209-B, 14727-D, 14911-D, 17252-D,
 17277-D, 30050-D, 31992-D
 CALTRANS: L.O.2510.2, MAP 3431
 CORNER RECORDS: 35040, 36015
 RECORD OF SURVEY: 15514, 22523
 SUBDIVISION MAPS: 4680, 7185, SEC 35 T1B5 R2W

FIELD DATA

BENCHMARK: NWBP CORONADO/HAWAII
 ELEV.= 131.427 MSL, BASED ON NGVD 29
 FEET AS SHOWN IN THE CITY OF SAN DIEGO BENCH BOOK

BASIS OF BEARINGS / COORDINATES:

THE BASIS OF BEARINGS FOR THIS PROJECT WAS DERIVED FROM
 A PREVIOUS STATIC GPS SURVEY USING R.O.F. S.4492 NAD 83 FEET,
 ZONE 6 (EPOCH 1993.35), UTILIZING RTK/GPS FIELD PROCEDURES WITH
 A CALTRANS BASE STATION BROADCAST OF 2017 AND CONSTRAINING TO
 GPS 24, AND GPS 17, I.E. N 15°14'55"W.

LEGEND

STANDARD DRAWINGS

SYMBOL

SIDEWALK	SDG-109, SDG-155, SDG-156, G-10	
CURB AND GUTTER	SDG-154, TYPE G	
CURB RAMP	SDG-132, SDG-133, SDG-135	
DRIVEWAY	SDG-159, SDG-161	
SCHEDULE 'J' PAVING	SDG-113	
FIRE HYDRANT	SDW-104	
CROSS GUTTER	SDG-157	
CHAIN LINK FENCE	SDM-112	
ELECTRICAL CONDUIT	SDG-119	
CONTINENTAL CROSSWALK		
ROAD CENTERLINE		
STOP LINE		
NO. 6 PULLBOX	CALTRANS ES-8	
EXISTING RIGHT-OF-WAY		
PROPOSED RIGHT-OF-WAY		
DAYLIGHT LINE		
MINOR CONTOUR		
MAJOR CONTOUR		

EXISTING STRUCTURES

EX WATER VALVE	
EX WATER METER	
EX FIRE HYDRANT	
EX SEWER MAIN & MANHOLES	
EX DRAINS	
EX PAVEMENT (PROFILE)	
EX GROUND LINE (PROFILE)	
EX TRAFFIC SIGNAL	
EX STREET LIGHT	
GAS MAIN	
ELEC. COND., TEL. COND., CATV	
RAILROAD, TROLLEY TRACKS	
GAS MAIN	

G-1

PLANS FOR THE CONSTRUCTION OF HOWARD AVE – VILLAGE PINE TO IRIS SIDEWALK COVER SHEET

SPEC. NO.	CITY OF SAN DIEGO, CALIFORNIA PUBLIC WORKS DEPARTMENT SHEET 1 OF 8 SHEETS	NBS	B-18019
DATE	01/03/2022	DATE	01/03/2022
FOR CITY ENGINEER	NICOLE GEORGE	PROJECT ENGINEER	A. SALVANI
DESCRIPTION	ORIGINAL	BY	AS/VIS
APPROVED	DATE	FILMED	DATE
146-1743	1786-6303	41469-01-D	
CONTRACTOR		INSPECTOR	

The City of
SAN DIEGO Engineering & Capital Projects

IP_PWP-00154846(818019) Howard Ave.dgn

23-DEC-2021 12:57

ASalvani

MTS STANDARD CONSTRUCTION NOTES

MTS STANDARD CONSTRUCTION NOTES

1. A RIGHT OF ENTRY (ROE) PERMIT IS NECESSARY WHEN ENTERING MTS/SAN DIEGO AND ARIZONA, EASTERN (SD&AE) RIGHT-OF-WAY (MTS R/W), INCLUDING AIRSPACE, FOR ANY PURPOSE. A ROE PERMIT IS ALSO REQUIRED WHEN WORKING IN PUBLIC RIGHT-OF-WAY OCCUPIED BY MTS/SD&AE FACILITIES. INFORMATION TO APPLY FOR ROE CAN BE OBTAINED FROM MTS'S WEBSITE AT: WWW.SDMTS.COM/BUSINESS/PERMITS.ASP OR CONTACT MTS PERMITS AT: MTSROW@SDMTS.COM. APPLICANT/CONTRACTOR IS REFERRED TO AS THE "PERMITEE".
2. CERTIFICATE OF INSURANCE FROM YOUR INSURANCE COMPANY FOR GENERAL LIABILITY, AUTOMOBILE LIABILITY, POLLUTION LIABILITY (IF APPLICABLE), PROFESSIONAL LIABILITY (IF APPLICABLE), AND WORKMAN'S COMPENSATION MUST BE SUBMITTED AND APPROVED BY MTS BEFORE THE PERMIT WILL BE PROCESSED. FULL INSURANCE REQUIREMENT GUIDELINES CAN BE ACCESSED FROM THE MTS WEBSITE NOTED ABOVE.
3. MOST GENERAL LIABILITY INSURANCE POLICIES DO NOT COVER RAILROADS. ANY EXCLUSIONS RELATING TO PERFORMANCE OF OPERATIONS WITHIN THE VICINITY OF ANY RAILROAD, BRIDGE, TRESTLE, TRACK, ROADBED, TUNNEL, UNDERPASS, OR CROSSING MUST BE DELETED FROM ALL POLICIES BY ENDORSEMENT. ADDITIONALLY, A SEPARATE RAILROAD PROTECTIVE LIABILITY POLICY WILL MOST LIKELY BE REQUIRED AFTER PROJECT REVIEW AS DEEMED NECESSARY BY MTS.
4. ALL PERSONNEL PERFORMING WORK ON MTS R/W, ON ENTERING MTS R/W SHALL REQUIRE PROPER MTS RAIL SAFETY TRAINING CERTIFICATION PRIOR TO ENTERING MTS R/W. ANY CONTRACTORS OR SUBCONTRACTORS PERFORMING WORK ON BEHALF OF PERMITEE, SHALL BE DEEMED AS AGENTS OF PERMITEE AND SHALL REQUIRE SAID TRAINING AS WELL. FOR TRAINING INFORMATION, EMAIL MTSROW@SDMTS.COM. TRAINING CERTIFICATION IS VALID FOR ONE YEAR AND IS CONFINED TO MTS/SD&AE FACILITIES ONLY.
5. PERMITEE SHALL PROVIDE MTS WITH AN APPROVED SET OF TRAFFIC CONTROL PLANS THAT CONFORM TO THE MANUAL ON UNIFORM TRAFFIC CONTROL DEVICES (MUTCD) AND COMPLY IN PARTICULAR WITH PART 8 - TRAFFIC CONTROL FOR RAILROAD AND LIGHT RAIL TRANSIT GRADE CROSSINGS.
6. IF PROJECT INVOLVES CASING SLEEVES UNDER RAILROAD TRACKS AND ACROSS MTS R/W, PERMITEE SHALL ADHERE TO MTS JACK AND BORE DESIGN CRITERIA AND CONSTRUCTION NOTES.
7. A PRE-CONSTRUCTION MEETING WILL BE REQUIRED WITH MTS/SDTI PRIOR TO WORK COMMENCING WITHIN MTS R/W. A WRITTEN NOTICE OF PLANNED START OF WORK MUST BE SUBMITTED TO MTS 4 BUSINESS DAYS PRIOR TO WORK STARTING IN MTS R/W. ALL WORK WILL BE STOPPED AND PERMITEE WILL NOT BE ALLOWED IN MTS R/W WITHOUT PROPER NOTIFICATION.
8. PERMITEE'S ON-SITE SUPERVISION SHALL RETAIN/MAINTAIN A FULLY EXECUTED COPY OF THE RIGHT OF ENTRY PERMIT AT ALL TIMES WHILE ON MTS R/W.
9. SDTI RAIL FLAGGING WILL BE REQUIRED ANYTIME WORK IS WITHIN FIFTEEN (15) FEET OF ANY OPERABLE TRACK INCLUDING AIRSPACE OR AS DEEMED NECESSARY BY MTS. A SDTI FLAGPERSON/RIGHT-OF-WAY WORK REQUEST FORM MUST BE SUBMITTED TO SDTI 4 MINIMUM OF THREE (3) BUSINESS DAYS PRIOR TO ANTICIPATED WORK. FORMS ARE ATTACHED TO THE ROE PERMIT OR CAN BE REQUESTED THROUGH MTS RIGHT OF WAY SERVICES.
10. A SDTI TRACTION POWER SHUTDOWN MAY BE NECESSARY FOR THE WORK ZONE TO PROTECT AND MAINTAIN THE REQUIRED TEN (10) FOOT CLEARANCE FROM TROLLEY OVERHEAD HIGH VOLTAGE CATENARY SYSTEMS (OCS). PERMITEE SHALL SUBMIT A SDTI RAIL TAG/TRACTION POWER REMOVAL REQUEST FORM TO SDTI AT LEAST THREE (3) BUSINESS DAYS PRIOR TO THE START OF WORK. POWER SHUTDOWNS SHALL ONLY BE ALLOWED DURING NON-OPERATING TROLLEY HOURS. FORMS ARE ATTACHED TO THE ROE PERMIT OR CAN BE REQUESTED THROUGH MTS RIGHT OF WAY SERVICES.
11. PERMITEE SHALL CONTACT AND SCHEDULE DIG-ALERT AND CABLE PIPE AND LEAK (CPL) PRIOR TO ANY EXCAVATION IN MTS R/W. PERMITEE SHALL NOTIFY MTS 4 MINIMUM OF THREE (3) BUSINESS DAYS PRIOR TO THE SCHEDULED UTILITY MARKOUT REQUEST AND SHALL SUBMIT A SDTI FLAGPERSON/RIGHT-OF-WAY WORK REQUEST FORM. SDTI PERSONNEL SHALL ACCOMPANY CPL FOR ANY MARKOUT OF TROLLEY FACILITIES.
12. PERMITEE SHALL ADHERE TO CONSTRUCTION AND SAFETY STANDARDS REQUIRED BY MTS OF THEIR CONTRACTORS WHEN WORKING WITHIN MTS R/W.
13. PERMITEE SHALL PERFORM ALL WORK IN ACCORDANCE WITH APPLICABLE CALIFORNIA PUBLIC UTILITIES COMMISSION (CPUC) AND CALIFORNIA OCCUPATIONAL SAFETY AND HEALTH ADMINISTRATION (OSHA) REGULATIONS, MTS LIST DESIGN CRITERIA, AMERICAN RAILWAY ENGINEERING AND MAINTENANCE OF WAY ASSOCIATION (AREMA) STANDARD SPECIFICATIONS, MANUAL ON UNIFORM TRAFFIC CONTROL DEVICES (MUTCD) GUIDELINES AND MTS, SDTI AND SDMV OPERATIONS AND SAFETY POLICIES.
14. PERMITEE AGREES THAT NO WORK BY HIMSELF OR HIS AUTHORIZED AGENT WILL INTERFERE WITH RAILROAD/TROLLEY OPERATIONS.
15. PERMITEE AGREES TO COORDINATE ON A DAILY BASIS A REASONABLE ACCESS TO ALL MTS/SD&AE FACILITIES WITH CONTRACT OPERATORS, SDTI, AND SD&V. SDTI TROLLEY OPERATIONS ARE GENERALLY FROM THE HOURS OF 4:00 A.M. TO 2:00 A.M. THE FOLLOWING DAY. SD&V FREIGHT TRAINS NORMAL OPERATIONS ARE DURING NON-TROLLEY HOURS.
16. PERMITEE SHALL MAINTAIN SAFE PEDESTRIAN ACCESS TO ALL TROLLEY PLATFORMS AND BUS STOPS AT ALL TIMES. A MINIMUM FIVE (5) FOOT WIDE ACCESSIBLE PEDESTRIAN PATH THROUGH THE CONSTRUCTION SITE SHALL BE MAINTAINED AT ALL TIMES. THE CONSTRUCTION BOUNDARY SHALL CONSIST OF A TOP AND BOTTOM RAIL CONSTRUCTED OF PLASTIC PIPE, OSHA PLASTIC MESH, OR APPROVED EQUAL. YELLOW CAUTION TAPE IS NOT ACCEPTABLE.
17. PERMITEE SHALL NOT STORE EQUIPMENT, TOOLS, AND MATERIALS WITHIN FIFTEEN (15) FEET FROM TROLLEY OPERABLE TRACK AND WITHIN TWENTY-FIVE (25) FEET FROM FREIGHT TRACK OPERATIONS.
18. PERMITEE SHALL NOT USE OR STORE HAZARDOUS SUBSTANCES, AS DEFINED BY THE COMPREHENSIVE ENVIRONMENTAL RESPONSE, COMPENSATION, AND LIABILITY ACT, AS AMENDED ("CERCLA") OR PETROLEUM OR OIL AS DEFINED BY APPLICABLE ENVIRONMENTAL LAWS ON MTS R/W.
19. NO VEHICULAR CROSSING OVER TRACKS SHALL BE INSTALLED OR USED BY PERMITEE WITHOUT PRIOR WRITTEN PERMISSION OF RAILROAD.



CONSTRUCTION CHANGE / ADDENDUM				WARNING
CHANGE	DATE	AFFECTED OR ADDED SHEET NUMBERS	APPROVAL NO.	0 1
				IF THIS BAR DOES NOT MEASURE 1" THEN DRAWING IS NOT TO SCALE.

IP_PWP-00154946(818019 Howard Ave.dgn

23-DEC-2021 13:00

ASalvani

G-2

PLANS FOR THE CONSTRUCTION OF
HOWARD AVE – VILLAGE PINE TO IRIS
SIDEWALK
COVER SHEET

SPEC. NO.	CITY OF SAN DIEGO, CALIFORNIA PUBLIC WORKS DEPARTMENT SHEET 2 OF 8 SHEETS	NBS	B-18019		
DATE	01/03/2022	DATE	8/11/16		
FOR CITY ENGINEER	NICOLE GEORGE	FOR CITY ENGINEER	A. GONZALEZ		
DESIGNER	SDTI CITY ENGINEER AND EOR	DESIGNER	A. SALVANI		
DESCRIPTION	BY	APPROVED	DATE	FILMED	PROJECT ENGINEER
ORIGINAL	AS/V/S	01/03/22			146-1743
					1786-6303
					COSBY COORDINATE
CONTRACTOR	NTP				41469-02-D
INSPECTOR	NOC				



- 1 PROTECT IN PLACE
- 2 RELOCATE EXISTING UTILITIES PER SHEET C-1
- 3 ADJUST EXISTING UTILITIES TO GRADE
- 4 APPROXIMATE SURVEY MONUMENT LOCATION TO BE PROTECTED IN PLACE
- 5 REMOVE EXISTING STRIPING BY HYDROBLASTING PER SHEET C-3
- 6 REMOVE EXISTING TRAFFIC SIGNAL POLE PER SHEET E-1
- 7 RELOCATE EXISTING SIGN PER SHEET C-3
- 8 REMOVE CONFLICTING ROOTS OR STUMP AS NEEDED.
- 9 REMOVE EXISTING FENCE

DEMOLITION LEGEND

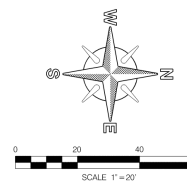
SAWCUT


REMOVE EXISTING ASPHALT PAVEMENT

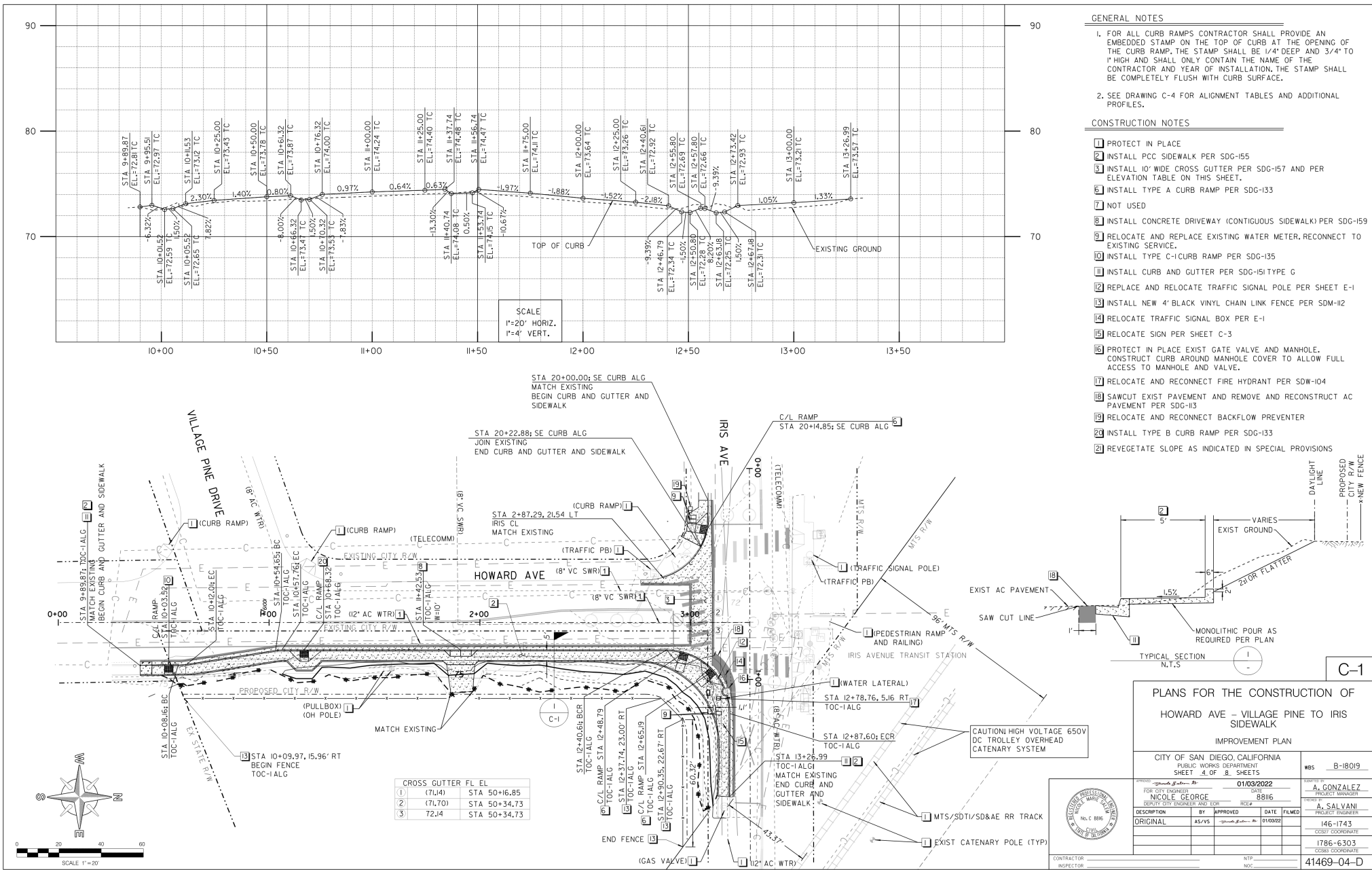
REMOVE EXISTING CONCRETE IMPROVEMENTS

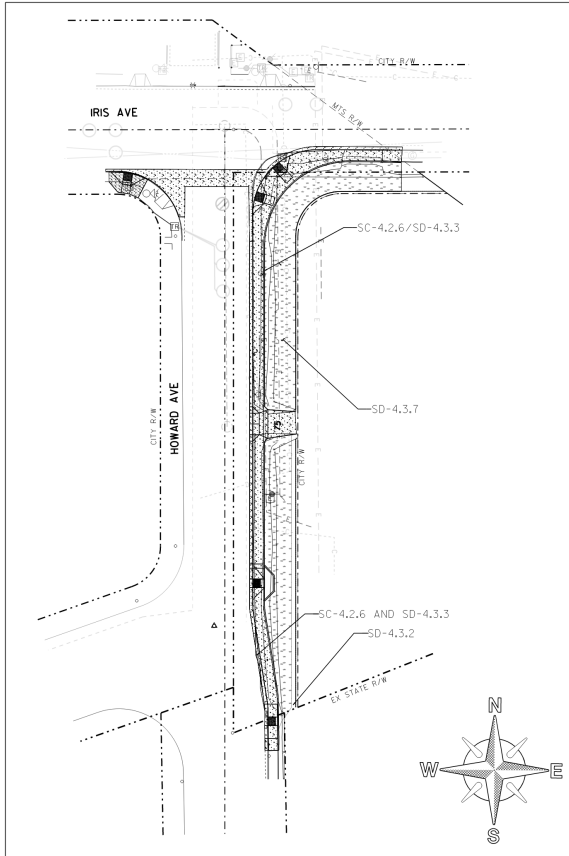
CLEAR AND GRUB

REMOVE EXISTING CURB



PLANS FOR THE CONSTRUCTION OF HOWARD AVE - VILLAGE PINE TO IRIS SIDEWALK DEMOLITION PLAN		NBS <u>B-1019</u>
CITY OF SAN DIEGO, CALIFORNIA PUBLIC WORKS DEPARTMENT SHEET 3 OF 8 SHEETS		DATE <u>01/03/2022</u> BY <u>NICOLE GEORGE</u> PROJECT MANAGER <u>A. GONZALEZ</u> PROJECT NUMBER <u>8816</u> DESIGNER <u>A. SALVANI</u> PROJECT NUMBER <u>1743</u>
	APPROVED <u>NICOLE GEORGE</u> FOR CITY ENGINEER AND APPROVED DATE <u>01/03/22</u>	FIELD NO. <u>1743</u> COAST COORDINATE <u>1786-6303</u> COAST COORDINATE
	DESCRIPTION ORIGINAL AC/FAS <u>NICOLE GEORGE</u>	DATE 01/03/22
CONTRACTOR _____ INSPECTOR _____	NTP _____ MOD _____	41469-03-D





SITE MAP
N.T.S.

SOURCE CONTROL BMP CHECKLIST FOR STANDARD PROJECTS		FORM I-4A	
ALL DEVELOPMENT PROJECTS MUST IMPLEMENT SOURCE CONTROL BMP'S. REFER TO CHAPTER 4 AND APPENDIX E OF THE BMP DESIGN MANUAL FOR INFORMATION TO IMPLEMENT BMP'S SHOWN IN THIS CHECKLIST. NOTE: ALL SELECTED BMP'S MUST BE SHOWN ON THE CONSTRUCTION PLANS.			
SOURCE CONTROL REQUIREMENT		APPLIED/D?	
4.2.1 PREVENTION OF ILLICIT DISCHARGES INTO THE M-4	<input checked="" type="checkbox"/> YES <input type="checkbox"/> NO <input type="checkbox"/> N/A		
4.2.2 STORM DRAIN STENCILING OR SIGNAGE	<input type="checkbox"/> YES <input type="checkbox"/> NO <input checked="" type="checkbox"/> N/A		
4.2.3 PROTECT OUTDOOR MATERIALS STORAGE AREAS FROM RAINFALL, RUN-ON, RUNOFF, AND WIND DISPERSAL	<input type="checkbox"/> YES <input type="checkbox"/> NO <input checked="" type="checkbox"/> N/A		
4.2.4 PROTECT MATERIALS STORED IN OUTDOOR WORK AREAS FROM RAINFALL, RUN-ON, RUNOFF, AND WIND DISPERSAL	<input type="checkbox"/> YES <input type="checkbox"/> NO <input checked="" type="checkbox"/> N/A		
4.2.5 PROTECT TRASH STORAGE AREAS FROM RAINFALL, RUN-ON, RUNOFF, AND WIND DISPERSAL	<input type="checkbox"/> YES <input type="checkbox"/> NO <input checked="" type="checkbox"/> N/A		
4.2.6 BMP'S BASED ON POTENTIAL SOURCES OF RUNOFF POLLUTANTS	<input checked="" type="checkbox"/> YES <input type="checkbox"/> NO <input type="checkbox"/> N/A		
ON-SITE STORM DRAIN INLETS	<input type="checkbox"/> YES <input type="checkbox"/> NO <input checked="" type="checkbox"/> N/A		
INTERIOR FLOOR DRAINS AND ELEVATOR SHAFT SUMP PUMPS	<input type="checkbox"/> YES <input type="checkbox"/> NO <input checked="" type="checkbox"/> N/A		
INTERIOR PARKING GARAGES	<input type="checkbox"/> YES <input type="checkbox"/> NO <input checked="" type="checkbox"/> N/A		
NEED FOR FUTURE INDOOR AND STRUCTURAL PEST CONTROL	<input type="checkbox"/> YES <input type="checkbox"/> NO <input checked="" type="checkbox"/> N/A		
LANDSCAPE / OUTDOOR PESTICIDE USE	<input type="checkbox"/> YES <input type="checkbox"/> NO <input checked="" type="checkbox"/> N/A		
POOLS, SPAS, PONDS, DECORATIVE FOUNTAINS, AND OTHER WATER FEATURES	<input type="checkbox"/> YES <input type="checkbox"/> NO <input checked="" type="checkbox"/> N/A		
FOOD SERVICE	<input type="checkbox"/> YES <input type="checkbox"/> NO <input checked="" type="checkbox"/> N/A		
REFUSE AREAS	<input type="checkbox"/> YES <input type="checkbox"/> NO <input checked="" type="checkbox"/> N/A		
INDUSTRIAL PROCESSES	<input type="checkbox"/> YES <input type="checkbox"/> NO <input checked="" type="checkbox"/> N/A		
OUTDOOR STORAGE OF EQUIPMENT OR MATERIALS	<input type="checkbox"/> YES <input type="checkbox"/> NO <input checked="" type="checkbox"/> N/A		
VEHICLE / EQUIPMENT REPAIR AND MAINTENANCE	<input type="checkbox"/> YES <input type="checkbox"/> NO <input checked="" type="checkbox"/> N/A		
FUEL DISPENSING AREAS	<input type="checkbox"/> YES <input type="checkbox"/> NO <input checked="" type="checkbox"/> N/A		
LOADING DOCKS	<input type="checkbox"/> YES <input type="checkbox"/> NO <input checked="" type="checkbox"/> N/A		
FIRE SPRINKLER TEST WATER	<input type="checkbox"/> YES <input type="checkbox"/> NO <input checked="" type="checkbox"/> N/A		
MISCELLANEOUS DRAIN OR WASH WATER	<input type="checkbox"/> YES <input type="checkbox"/> NO <input checked="" type="checkbox"/> N/A		
PLAZAS, SIDEWALKS, AND PARKING LOTS	<input checked="" type="checkbox"/> YES <input type="checkbox"/> NO <input type="checkbox"/> N/A		
SC-6A: LARGE TRASH GENERATING FACILITIES	<input type="checkbox"/> YES <input type="checkbox"/> NO <input checked="" type="checkbox"/> N/A		
SC-6B: ANIMAL FACILITIES	<input type="checkbox"/> YES <input type="checkbox"/> NO <input checked="" type="checkbox"/> N/A		
SC-6C: PLANT NURSERIES AND GARDEN CENTERS	<input type="checkbox"/> YES <input type="checkbox"/> NO <input checked="" type="checkbox"/> N/A		
SC-6D: AUTOMOTIVE-RELATED USES	<input type="checkbox"/> YES <input type="checkbox"/> NO <input checked="" type="checkbox"/> N/A		
DISCUSSION / JUSTIFICATION FOR ALL "NO" ANSWER SHOWN ABOVE: N/A			

SITE DESIGN BMP CHECKLIST FOR STANDARD PROJECTS		FORM I-5A	
ALL DEVELOPMENT PROJECTS MUST IMPLEMENT SITE DESIGN BMP'S. SD-1 THROUGH SD-8. REFER TO CHAPTER 4 AND APPENDIX E OF THE BMP DESIGN MANUAL FOR INFORMATION TO IMPLEMENT BMP'S SHOWN IN THIS CHECKLIST. NOTE: ALL SELECTED BMP'S MUST BE SHOWN ON THE CONSTRUCTION PLANS.			
SITE DESIGN REQUIREMENT		APPLIED/D?	
4.3.1 MAINTAIN NATURAL DRAINAGE PATHWAYS AND HYDROLOGIC FEATURES	<input type="checkbox"/> YES <input type="checkbox"/> NO <input checked="" type="checkbox"/> N/A		
4.3.2 CONSERVE NATURAL AREAS, SOILS, AND VEGETATION	<input checked="" type="checkbox"/> YES <input type="checkbox"/> NO <input type="checkbox"/> N/A		
4.3.3 MINIMIZE IMPERVIOUS AREA	<input checked="" type="checkbox"/> YES <input type="checkbox"/> NO <input type="checkbox"/> N/A		
4.3.4 MINIMIZE SOIL COMPACTION	<input checked="" type="checkbox"/> YES <input type="checkbox"/> NO <input type="checkbox"/> N/A		
4.3.5 IMPERVIOUS AREA DISPERSION	<input type="checkbox"/> YES <input type="checkbox"/> NO <input checked="" type="checkbox"/> N/A		
4.3.6 RUNOFF COLLECTION	<input type="checkbox"/> YES <input type="checkbox"/> NO <input checked="" type="checkbox"/> N/A		
4.3.7 LANDSCAPING WITH NATIVE OR DROUGHT TOLERANT SPECIES	<input checked="" type="checkbox"/> YES <input type="checkbox"/> NO <input type="checkbox"/> N/A		
4.3.8 HARVESTING AND USING PRECIPITATION	<input type="checkbox"/> YES <input type="checkbox"/> NO <input checked="" type="checkbox"/> N/A		
DISCUSSION / JUSTIFICATION FOR ALL "NO" ANSWER SHOWN ABOVE: N/A			
(i) ANSWER FOR EACH SOURCE CONTROL AND SITE DESIGN CATEGORY SHALL BE PURSUANT TO THE FOLLOWING: "YES" MEANS THE PROJECT WILL IMPLEMENT THE BMP AS DESCRIBED IN CHAPTER 4 AND/OR APPENDIX E OF THE BMP DESIGN MANUAL. DISCUSSION / JUSTIFICATION IS NOT REQUIRED. "NO" MEANS THE BMP IS APPLICABLE TO THE PROJECT BUT IT IS NOT FEASIBLE TO IMPLEMENT. DISCUSSION / JUSTIFICATION MUST BE PROVIDED. "N/A" MEANS THE BMP IS NOT APPLICABLE AT THE PROJECT SITE BECAUSE THE PROJECT DOES NOT INCLUDE THE FEATURE THAT IS ADDRESSED BY THE BMP (E.G., THE PROJECT HAS NO OUTDOOR MATERIALS STORAGE AREAS). DISCUSSION / JUSTIFICATION MAY BE PROVIDED.			

SITE DESIGN AND SOURCE CONTROL BMP OPERATION AND MAINTENANCE PROCEDURE				
O&M RESPONSIBLE PARTY: DESIGNER, TRANSPORTATION AND STORM WATER DEPARTMENT				
BMP DESCRIPTION	INSPECTION FREQUENCY	MAINTENANCE FREQUENCY	MAINTENANCE METHOD	SHEET NUMBER
SITE DESIGN ELEMENTS	N/A	N/A	N/A	N/A
DESCRIPTION: N/A				
SOURCE CONTROL ELEMENTS	EVERY 6 MO.	AS NEEDED	SWEEPING	493 LF C-1
DESCRIPTION: SIDEWALK				
SOURCE CONTROL ELEMENTS	EVERY 6 MO.	AS NEEDED	TRIMMING/WEED CONTROL	3503 SF L-1
DESCRIPTION: LANDSCAPING				

STORM WATER NOTES

- THIS PROJECT IS SUBJECT TO MUNICIPAL CODE SECTION 4303 AND ORDER NO. R9-2013-0001 AS AMENDED BY R9-2015-0001 AND R9-2015-0002
- ALL SAW CUTTING, SANDBLASTING AND OTHER OPERATIONS WITH POTENTIAL TO PRODUCE A DISCHARGE MUST IMPLEMENT EFFECTIVE BMP'S WHILE THE WORK IS BEING PERFORMED.
- LANDSCAPING OF SLOPE TO BE COMPLETED PER LANDSCAPING PLAN IN SPECIAL PROVISIONS.

C-2

PLANS FOR THE CONSTRUCTION OF HOWARD AVE - VILLAGE PINE TO IRIS SIDEWALK IMPROVEMENT PLAN				
CITY OF SAN DIEGO, CALIFORNIA PUBLIC WORKS DEPARTMENT SHEET 5 OF 8 SHEETS				WBS B-18019
DESIGNED BY NICOLE GEORGE SENIOR CITY ENGINEER AND TOR	DATE 01/03/2022	PROJECT MANAGER A. CONZALEZ		
DESCRIPTION ORIGINAL	BY AS/V/S	DATE 01/03/22	PROJECT ENGINEER A. SALVANI	
			COST COORDINATOR 1786-6303	
			COST COORDINATOR 41469-05-D	
CONTRACTOR INSPECTOR				NTP NOC

STRIPING AND SIGNING GENERAL NOTES

1. INSTALLATION OF ALL STRIPING, SIGNS AND PAVEMENT MARKERS SHALL BE THE RESPONSIBILITY OF THE CONTRACTOR.
2. ALL STRIPING AND SIGNING SHALL CONFORM TO THE MOST RECENTLY ADOPTED EDITION OF THE FOLLOWING MANUALS:

DOCUMENT NO.	EDITION	DESCRIPTION
PWPIOI019-01	2018	STANDARD SPECIFICATIONS FOR PUBLIC WORKS CONSTRUCTION (THE "GREEN BOOK")
PWPIOI019-02	2018	CITY OF SAN DIEGO SPECIFICATIONS FOR PUBLIC WORKS CONSTRUCTION (THE "WHITEBOOK")
PWPIOI019-03	2018	CITY OF SAN DIEGO STANDARD DRAWINGS
PWPIO4220-09	2014	CALIFORNIA MUTCD MANUAL 2014 EDITION REVISION 5
PWPIO3019-06	2018	CALTRANS STANDARD PLANS

3. ALL SIGNING AND STRIPING IS SUBJECT TO THE APPROVAL OF THE CITY ENGINEER PRIOR TO INSTALLATION AND/OR REMOVAL.
4. THE CONTRACTOR SHALL REMOVE ALL CONFLICTING STRIPING, PAVEMENT MARKINGS AND LEGENDS BY SANDBLASTING AND/OR GRINDING WITH THE SEAL. ANY DEBRIS SHALL BE PROMPTLY REMOVED BY THE CONTRACTOR.
5. SIGN POSTS SHALL BE INSTALLED WITH SQUARE PERFORATED STEEL TUBING WITH A BREAKAWAY BASE PER CITY OF SAN DIEGO STANDARD DRAWING M-45.
6. ALL RAISED MEDIAN NOSES SHALL BE PAINTED YELLOW.
7. ALL SIGNS SHOWN ON THE STRIPING AND SIGNING PLANS SHALL BE NEW SIGNS PROVIDED AND INSTALLED BY THE CONTRACTOR, EXCEPT FOR EXISTING SIGNS SPECIFICALLY INDICATED TO BE RELOCATED OR TO REMAIN.
8. STRIPED CROSSWALKS SHALL HAVE AN INSIDE DIMENSION OF 10 FEET UNLESS INDICATED OTHERWISE.
9. ALL LIMIT LINES/STOP LINES, CROSSWALK LINES, PAVEMENT LEGENDS, AND ARROWS (EXCEPT WITHIN BIKE LANES) SHALL BE THERMOPLASTIC.
10. THE CONTRACTOR SHALL NOTIFY THE CITY TRAFFIC ENGINEER AT (858)495-4742 A MINIMUM OF (5) WORKING DAYS PRIOR TO AND UPON COMPLETION OF STRIPING AND SIGNING.

CONSTRUCTION NOTES

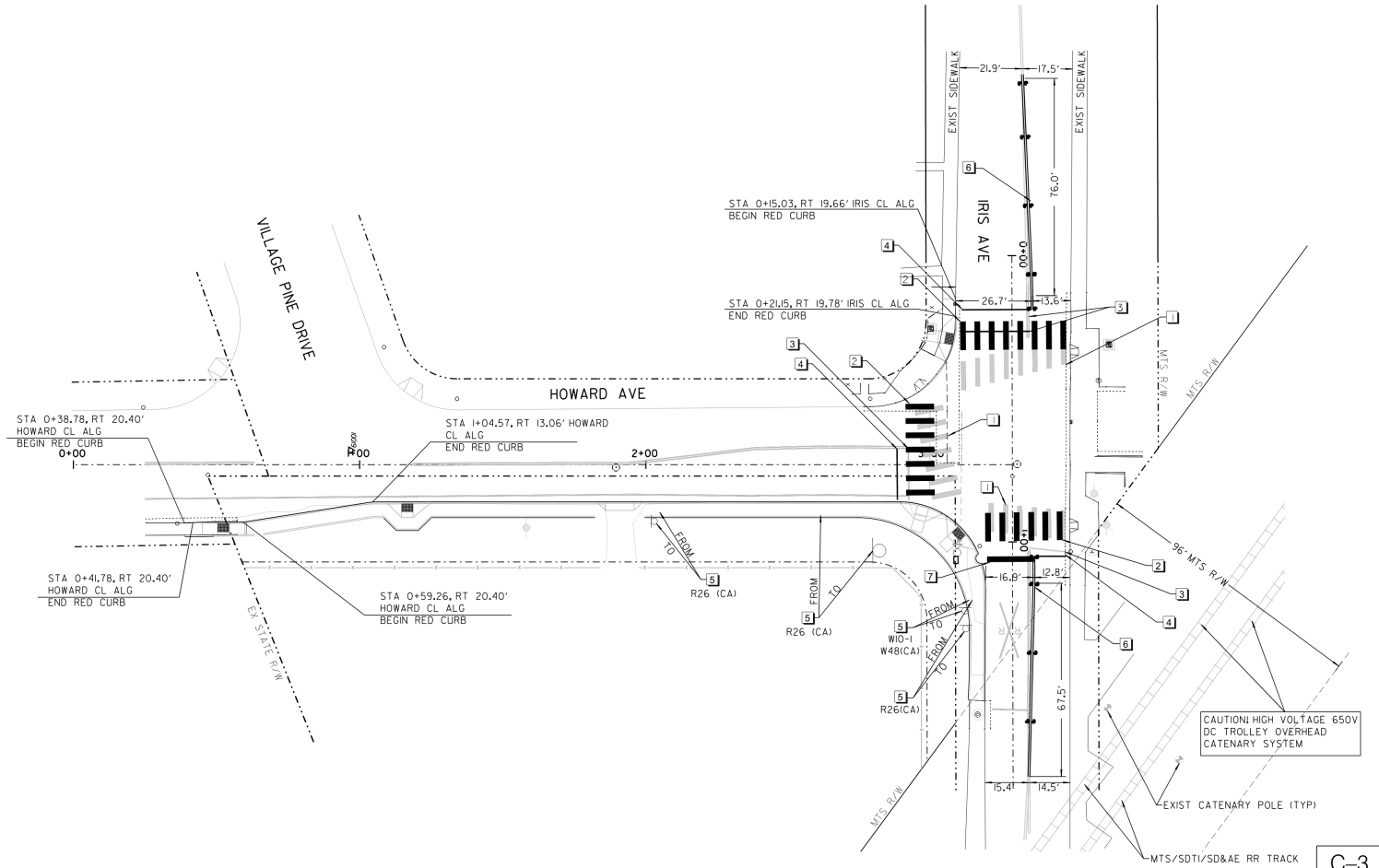
- 1 HYDROBLAST EXISTING THERMOPLASTIC YELLOW CONTINENTAL CROSSWALK
- 2 INSTALL THERMOPLASTIC YELLOW CONTINENTAL CROSSWALK PER SDM-I6
- 3 HYDROBLAST EXISTING TRAFFIC STRIPE
- 4 INSTALL THERMOPLASTIC 12" WHITE LIMIT LINE PER SDM-I6
- 5 REMOVE AND REINSTALL TRAFFIC SIGNS (MAINTAIN 48" HORIZONTAL CLEARANCE AND 84" VERTICAL CLEARANCE AROUND OBJECTS)
- 6 INSTALL CENTERLINE PER CA MUTCD FIGURES 3A-10(CA) THROUGH 3A-13 (CA).
- 7 INSTALL 24" RAIL ROAD STOP LINE PER CA MUTCD.

SIGNS THIS SHEET

N.T.S.



W10-1



PLANS FOR THE CONSTRUCTION OF HOWARD AVE - VILLAGE PINE TO IRIS SIDEWALK

SIGNING AND STRIPING PLAN

CITY OF SAN DIEGO, CALIFORNIA
PUBLIC WORKS DEPARTMENT
SHEET 5 OF 8 SHEETS

DATE: 01/03/2022
PROJECT NO.: 88116
PROJECT ENGINEER: A. SALVANI
COST COORDINATOR: 1786-6303
COST COORDINATOR: 41469-06-D



DESCRIPTION	BY	APPROVED	DATE	FILMED
ORIGINAL	VS	Nicole George	01/03/22	

CONTRACTOR: NTP
INSPECTOR: NDC

Alignment: TOC - 1					
POINT	STATION	NORTHING (Y)	EASTING (X)	ELEMENT	BRG/DELTA
POB	9+89.87	1787546.51	6310043.15	STRAIGHT	N 2°13'48" W
PI	9+95.51	1787552.15	6310042.93	STRAIGHT	N 1°00'58" W
PI	10+00.00	1787556.64	6310042.85	STRAIGHT	N 0°57'45" E
PI	10+08.16	1787564.79	6310042.98	STRAIGHT	N 0°57'45" E
PC	10+08.72	1787565.35	6310042.99	R = -20.00	Δ = 9°25'15" LT
PT	10+12.01	1787568.63	6310042.78	STRAIGHT	N 8°27'30" W
PC	10+54.65	1787610.81	6310036.51	R = +20.00	Δ = 8°54'50" RT
PT	10+57.76	1787613.91	6310036.29	STRAIGHT	N 0°27'21" E
PC	12+40.29	1787796.43	6310037.74	R = +30.00	Δ = 90°21'36" RT
PT	12+87.60	1787826.19	6310068.17	STRAIGHT	S 89°11'03" E
POE	13+26.99	1787825.63	6310107.55		

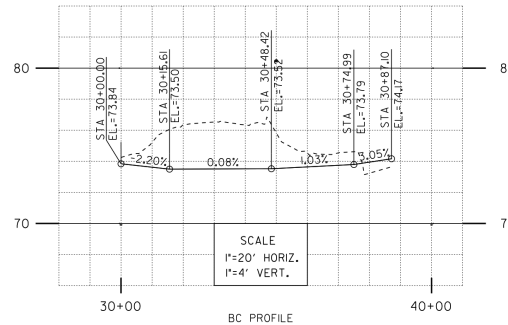
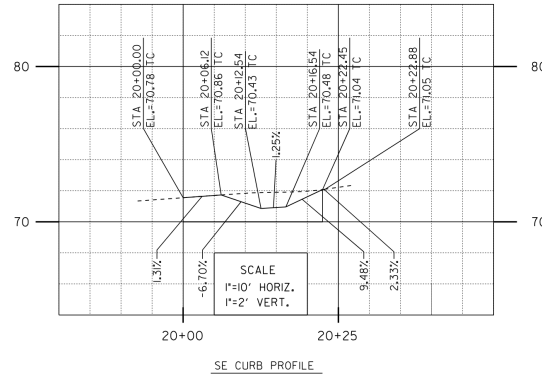
Alignment: SE CURB					
POINT	STATION	NORTHING (Y)	EASTING (X)	ELEMENT	BRG/DELTA
POB	20+00.00	1787816.57	6309966.97	STRAIGHT	S 89°18'55" E
PI	20+02.30	1787816.54	6309969.27	STRAIGHT	S 88°05'31" E
PI	20+10.99	1787816.25	6309977.95	STRAIGHT	S 80°46'14" E
PI	20+11.42	1787816.25	6309977.95	STRAIGHT	S 80°46'14" E
PI	20+14.95	1787815.69	6309981.44	STRAIGHT	S 75°43'10" E
PI	20+16.67	1787815.26	6309983.11	STRAIGHT	S 71°11'11" E
PI	20+19.23	1787814.44	6309985.52	STRAIGHT	S 65°27'23" E
PI	20+21.76	1787813.39	6309987.83	STRAIGHT	S 61°01'16" E
POE	20+22.88	1787812.84	6309988.81		

Alignment: Howard CL					
POINT	STATION	NORTHING (Y)	EASTING (X)	ELEMENT	BRG/DELTA
POB	0+00.00	1787507.89	6310022.45	STRAIGHT	N 0°27'21" E
PI	0+98.61	1787606.50	6310023.23	STRAIGHT	N 0°27'21" E
POE	3+28.02	1787835.91	6310025.06		

Alignment: Iris CL					
POINT	STATION	NORTHING (Y)	EASTING (X)	ELEMENT	BRG/DELTA
POB	0+00.00	1787836.31	6309952.04	STRAIGHT	S 89°40'54" E
PI	0+77.01	1787835.89	6310029.06	STRAIGHT	S 89°40'54" E
POE	1+86.78	1787835.28	6310138.82		

Alignment: BC					
POINT	STATION	NORTHING (Y)	EASTING (X)	ELEMENT	BRG/DELTA
PC	30+00.00	1787781.30	6310042.62	R = +40.00	Δ = 90°21'36" RT
PT	30+63.08	1787820.97	6310083.19	STRAIGHT	S 89°11'03" E
PI	30+78.36	1787820.76	6310098.47	STRAIGHT	S 87°11'15" E
POE	30+87.10	1787820.33	6310107.20		

Alignment: CROSS GTR					
POINT	STATION	NORTHING (Y)	EASTING (X)	ELEMENT	BRG/DELTA
POB	50+00.00	1787813.17	6309989.34	STRAIGHT	N 89°30'25" E
PI	50+16.85	1787813.31	6310006.19	STRAIGHT	S 89°20'08" E
PI	50+34.70	1787813.11	6310024.04	STRAIGHT	S 89°20'08" E
POE	50+52.56	1787812.90	6310041.89		



C-4

PLANS FOR THE CONSTRUCTION OF

HOWARD AVE - VILLAGE PINE TO IRIS SIDEWALK

ALIGNMENT TABLES AND PROFILES

CITY OF SAN DIEGO, CALIFORNIA				NBS B-18019	
PUBLIC WORKS DEPARTMENT					
SHEET 7 OF 8 SHEETS					
DESIGNED BY: COLE GEORGE CHECKED BY: COLE GEORGE DATE: 01/03/2022 SCALE: 8816		DRAWN BY: A. SALVANI DATE: 01/03/2022 SCALE: 146-1743		PROJECT ENGINEER: A. SALVANI PROJECT NO.: 1786-6303 CDSB COORDINATE: 41469-07-D	
ORIGINAL BY: AS/VIS DATE: 01/03/22		APPROVED: COLE GEORGE DATE: 01/03/22		NTP: 41469-07-D NDC: 41469-07-D	

CONTRACTOR: _____
 INSPECTOR: _____



Howard Avenue - Village Pine to Iris Avenue Sidewalk Project

General Revegetation Notes

1. Revegetation of the Project Area shall be in accordance with the latest edition of the City of San Diego Whitebook, Landscape Standards (2018) (Part 8) and City of San Diego Biological Resource Guidelines.
2. Revegetation of the site will include treatment and removal of non-native vegetation, application of native seed mix, hydroseed slurry, installation of native container plantings, supplemental irrigation, and a long-term maintenance (Table 2).
3. These plans are to be used as a general guide with the final layout to be determined onsite by the Project Biologist.
4. All erosion control measures (i.e. jute netting, straw wattles, gravel bags) will be installed immediately following the completion of construction activities. Revegetation activities such as installation of container plants, hydroseed application, and temporary irrigation should be conducted during rainy season (October to April) following completion of construction activities.
5. Contractor shall repair and/or replace all above ground erosion control BMPs damaged during the 120 Day PEP and 25-month maintenance and monitoring period. Any above grade erosion control measures or BMPs shall be removed by the contractor and as directed by the Project Biologist following acceptance of the 25-month maintenance and monitoring period by the City Representative and Project Biologist.
6. Contractor shall remove all trash and/or debris from the revegetation site prior to and following the revegetation installation, and until the end of the 25-month maintenance and monitoring period.
7. Orange construction fence (or if in a wildlife area, a yellow rope barrier as directed by the RE) shall be installed to prevent unauthorized access to the Project Area. The Contractor is responsible for maintaining the fence/barrier throughout the duration of the Project.
8. Final acceptance of revegetation is subject to meeting success criteria (Table 1). Final success criteria may be lowered by Project Biologist if natural site conditions prevent the establishment of vegetation.

Site Preparation

1. Non-native plant species currently occupying revegetation areas shall be removed or treated with herbicide prior to installation of native plant material. The Contractor shall coordinate with the Project Biologist regarding identification of invasive species to be removed/treated.
2. If erosion control materials such as silt fencing and fiber rolls remain on site prior to planting, they must be in serviceable condition prior to the restoration implementation and should remain in place. If they are degraded, they should be replaced prior to planting and hydroseeding the area and shall remain until vegetation has been established.
3. Areas that will be hydroseeded or hand-seeded must be cleared of loose rocks and debris prior to seed application. Compacted soil surfaces should be scarified to a depth between 0.25" - 0.50" for increased soil contact and seed bedding.

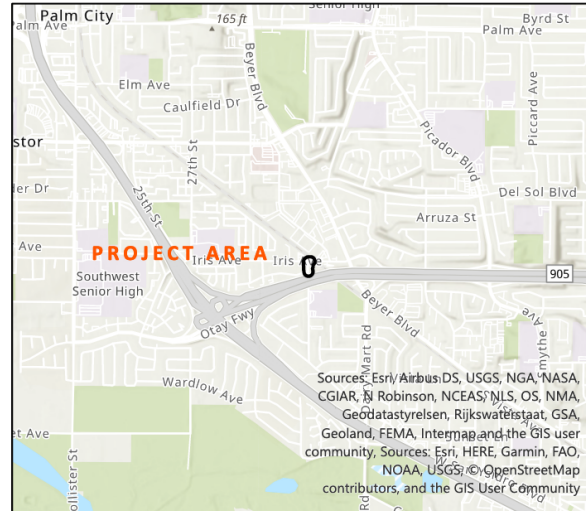
Irrigation

1. The contractor will be responsible for providing sufficient water to the site to ensure container plants and hydroseed become well established and the site meets success criteria. The contractor will be required to submit the method of irrigation to the city representative and project biologist for approval.
2. Irrigation shall deliver water sufficiently and shall be appropriate to the needs of the plant materials. Overwatering as evidenced by soggy soils, standing water, runoff, erosion or other similar conditions shall be managed and prevented by the Contractor. The amount of water applied must be adjusted when warranted by site conditions.
3. Repairs to the irrigation system due to vandalism or any other reason shall be the responsibility of the contractor.
4. Irrigation shall be discontinued prior to the end of the 25-month maintenance and monitoring period or earlier, as directed by the Project Biologist.
5. After the final 25-month success criteria are met and the mitigation and monitoring program has been signed off, any components of the irrigation system shall be carefully removed from the site without adversely impacting native vegetation.

Hydroseed

All hydroseed shall be applied in accordance with the City of San Diego Whitebook (2018) Part 8. Hydroseed shall be applied in a two-step process as follows:

1. The seed mix shown below shall be mixed with Type 11 wood fiber hydromulch and applied evenly over all disturbed soils.
2. Immediately following application of the Type-11 wood fiber hydromulch, Type-13 bonded fiber matrix hydromulch shall be applied over the area.
3. All wood fiber and bonded fiber matrix hydromulch shall be applied per the manufacturers stated application rates.



Container Planting

All container planting shall be installed in accordance with the City of San Diego Whitebook (2018) Part 8.

1. Installation shall occur under the direction of the Project Biologist. Spotting of container stock plants before planting may be required. Plants shall be planted and watered as specified immediately after the removal from the containers. Containers shall not be cut prior to placing the plants in the planting area.
2. Planting pits for container plants shall be approximately 1.5 times as deep and 3 times as wide as the container size. All planting pits shall be filled with water and allowed to completely drain prior to plant installation. After the planting pits have been presoaked, Re-vegetation or Restoration Contractor shall backfill the hole to the appropriate planting depth and set plants in the center of the hole, then backfill the hole and thoroughly apply more water.
3. A watering basin, approximately twice the size of the plant canopy shall be created. Re-vegetation or Restoration Contractor shall apply 2-inches of weed free mulch inside the watering basin.
4. Planting shall not be performed if plant pits contain standing water or if pits are over saturated to a condition which may result in an unhealthy condition for the plant.
5. Unless specified otherwise or directed by the Project biologist, installation of plant and seed material shall occur during the rainy season (Oct 1 - Feb 15).

Maintenance and Monitoring Requirements

1. The 120-Day PEP will begin following successful completion of revegetation installation and acceptance by the Project Biologist and/or City Representative.
2. The maintenance period begins following completion and acceptance of the 120-day PEP and may be extended at the determination of the City Representative. Revegetation areas shall be maintained for a period of not less than 25-months. All revegetated areas shall be maintained by the contractor until final approval by the City.
3. Prior to final approval, the City representative may require corrective action including but not limited to re-seeding and the repair of any soil erosion or slope slippage, in consultation with the Project Biologist.
4. Weeding and/or herbicide application shall be done regularly by the contractor. Weeding shall be done at a minimum of bi-weekly until the end of the 120-day PEP, and monthly throughout the 25 months maintenance.
5. Contractor shall control weeds as identified by the Project Biologist.

	Percent Cover (Native Vegetation)	Percent Cover Non-native Vegetation (CAL-IPC Listed Highly Invasive Species)	Container Plant Survival (%)
Plant Establishment Period (PEP)	NA ²	0	100
25-Month Maintenance and Monitoring Period	45	0	NA

¹ Final success criteria may be lowered by the Project Biologist, in consultation with the City Representative, if natural site condition prevents the establishment of vegetation.
² Site BMPs must be in good condition and there must be no erosion issues by the end of the 120-day PEP.

Period	Contractor Responsibilities	Project Biologist Responsibilities	Reporting and Submittals
Installation	Contractor is responsible for preparation of site, implementation of the revegetation plan, and installation of container plants and seed as shown on the plans or as directed by the Project Biologist.	Project Biologist is responsible for monitoring installation, as needed, to ensure successful installation and implementation of the revegetation plan.	Project Biologist to submit memo to City Representative within 7 days of installation completion.
120-Day PEP	Contractor is responsible for all necessary maintenance (watering, weed abatement, replacement planting, maintain BMPs) to ensure establishment of vegetation and site remains erosion free. Maintenance activities shall occur as needed, but not less than bi-weekly.	Project Biologist is responsible for monitoring revegetation and providing maintenance recommendations. Monitoring shall occur bi-weekly for the first two months, then monthly thereafter.	Contractor to notify City Representative prior to the completion of the 120 Day PEP for site inspection. Project Biologist to submit monitoring memo to City Representative following each site visit and completion memo within 7 days of completion.
25-Month Maintenance and Monitoring	Contractor is responsible for all necessary maintenance (watering, weed abatement, replacement planting, maintain BMPs) to meet success criteria. Maintenance activities shall occur as needed, but not less than monthly.	Project Biologist is responsible for monitoring revegetation and providing maintenance recommendations. Monitoring shall occur quarterly.	Project Biologist to submit quarterly monitoring memo to City Representative. Prior to completion of the 25 Month, Project Biologist to submit final memo within 14 days of completion of the 25 months

Species	Common Name	Density Lbs./Acre
<i>Acmispon glaber</i>	Coastal deerweed	4
<i>Bromus carinatus</i> "Cucamonga"	Cucamonga brome	4
<i>Deinandra fasciculata</i>	Fascicled tarplant	4
<i>Encelia californica</i>	California encelia	4
<i>Eriogonum fasciculatum</i>	California buckwheat	1
<i>Eschscholzia californica</i>	California poppy	1
<i>Festuca microstachys</i>	Small fescue	2
<i>Lupinus succulentus</i>	Arroyo lupine	2
<i>Stipa pulchra</i>	Purple needle grass	4
<i>Trifolium wildenowii</i>	Tomcat clover	2
Total		27 lbs./acre

Species	Common Name	Unit Size	Quantity/Acre
<i>Acmispon glaber</i>	Coastal deerweed	1-gallon	500
<i>Encelia californica</i>	California encelia	1-gallon	250
<i>Eriogonum fasciculatum</i>	California buckwheat	1-gallon	250
Total			1,000/Acre

REVEGETATION PLAN - SHEET 1

8/11/2020

HOWARD AVE – VILLAGE PINE TO IRIS SIDEWALK

LEGEND

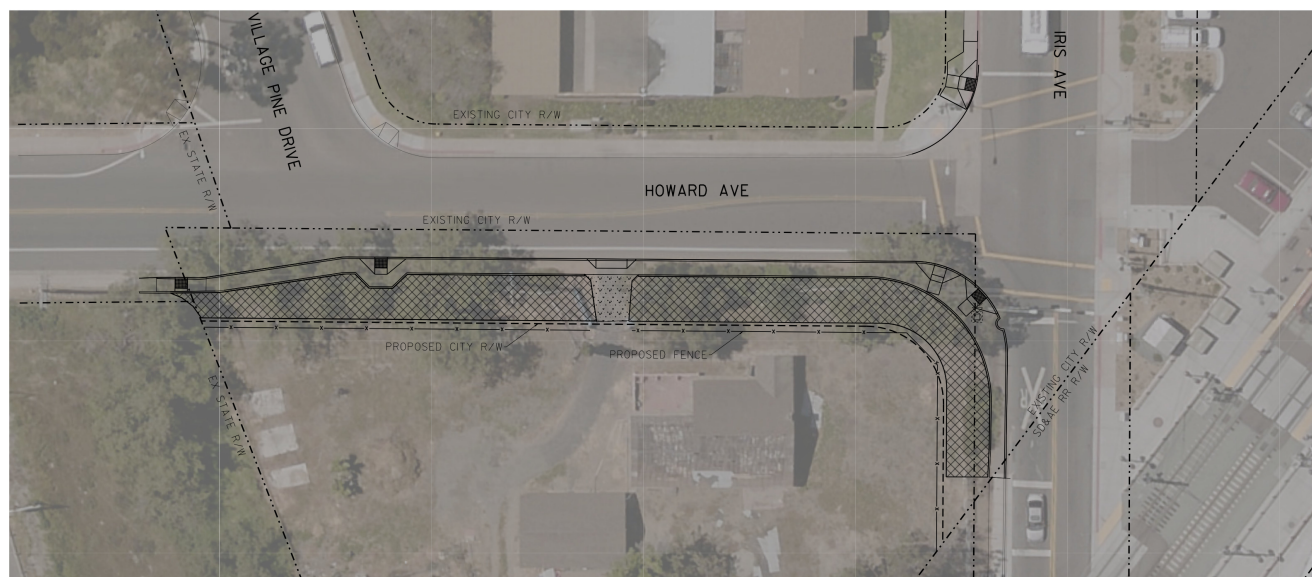
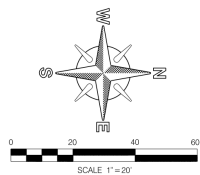
REVEGETATION AREA
(HYDROSEEDING/CONTAINER
PLANTS, 0.09 ACRES)



NEW CONCRETE SIDEWALK



NEW CURB RAMP



REVEGETATION PLAN – SHEET 2

CERTIFICATION OF COMPLIANCE WITH AMERICANS WITH DISABILITIES ACT (ADA)

TR-0405 (REV 03/2015)

Permit No.

11-22-NCS-0067

Dist/Co/Rte/PM

11/SD/CA-905/3.633

Encroachment permit projects that create, alter, or affect pedestrian facilities are required to be designed and constructed in accordance with the policies and standards in the current Design Information Bulletin 82 (DIB 82). Certification of compliance must be submitted by the permittee or permittee's authorized representative prior to the issuance of an encroachment permit or rider AND after construction is completed. DIB 82 can be found at:

<http://www.dot.ca.gov/hq/oppd/dib/dibprg.htm>

A separate TR-0405 form must be used for the Design and Post Construction Certifications. A California Licensed Professional Engineer, Licensed Architect or Licensed Landscape Architect's Stamp* is required except when (1) an authorized utility company representative or (2) an authorized Caltrans representative signs the form (at the discretion of the District Permit Engineer).

Design Certification (prior to issuance of encroachment permit)

- ☒ I, Nicole George a California Licensed Professional Engineer, Licensed Architect or Licensed Landscape Architect, do hereby certify that:
- ☐ I, _____ an authorized Caltrans representative, do hereby certify that:
- ☐ I, _____ an authorized representative of _____ (utility company only) do certify that:

☒ This project has been designed in accordance with DIB 82.

☐ An approved Exception to Accessibility Design Standards is attached.

SIGNATURE



TITLE

Deputy City Engineer

DATE

11/23/2021

Post Construction Certification

- ☐ I, _____ a California Licensed Professional Engineer, Licensed Architect or Licensed Landscape Architect, do hereby certify that:
- ☐ I, _____ an authorized Caltrans representative, do hereby certify that:
- ☐ I, _____ an authorized representative of _____ (utility company only) do certify that:

☐ This project has been constructed in accordance with DIB 82.

☐ An approved Exception to Accessibility Design Standards is attached.

SIGNATURE

TITLE

DATE

CA. LICENSED PROFESSIONAL ENGINEER, LICENSED ARCHITECT OR LICENSED LANDSCAPE ARCHITECT'S STAMP



I attest to the technical information contained herein and have judged the qualifications of all technical specialists providing engineering data upon which recommendations, conclusions, and decisions were based.

*A Licensed Architect or Licensed Landscape Architect may prepare this document and sign and seal it in lieu of a Registered Civil Engineer, provided the same Licensed Architect or Licensed Landscape Architect designed the on-site improvements. Use the seal of the appropriate licensed person in responsible charge.

STORMWATER SPECIAL PROVISIONS FOR MINIMAL OR NO IMPACT (SWSP)

TR-0400 (Rev 05/2018)

1. **GENERAL:** The purpose of these Special Provisions is to provide the Permittee with specifications for water pollution control to minimize, prevent, or control the discharge of material into the air, surface waters, groundwater, and storm sewers owned by the State or local agencies. These provisions are not intended to take the place of the Caltrans Water Pollution Control Program (WPCP) for projects where soil disturbance from work activities less than one acre, or work activities of one acre or more subject to the preparation of the Caltrans Storm Water Pollution Prevention Plan (SWPPP). The Permittee must comply with the following Special Provisions and the direction of the State Representative. All Stormwater Best Management Practices (BMPs) must conform to Section 13 Water Pollution Control of Caltrans' Standard Specifications.
2. **NPDES REQUIREMENTS:** The Permittee must be responsible for full compliance with the Caltrans Storm Water Program and the Caltrans National Pollutant Discharge Elimination System (NPDES) Permit requirements (*Order No. 2012-0011-DWQ, NPDES No CAS000003*) and for and projects disturbing one acre or more of soil, full compliance with the California Construction General Permit (*Order No. 2009-0009-DWQ, NPDES No CAS000002*) or for projects for projects that have one acre or more of soil disturbance in the Lahontan Region (*Order No. R6T-2016-0010, NPDES No CAG616002*). It is the Permittee's responsibility to install, inspect, and repair or maintain facilities and devices used for water pollution control practices (BMPs) before performing daily work activities. Installation, inspection and maintenance responsibilities on the job site include: 1) soil stabilization materials in work areas that are inactive or prior to storm events, 2) water pollution control devices to control sediment and erosion, 3) implementation of spill and leak prevention procedures for chemical and hazardous substances stored on the job site, 4) material storage, 5) stockpile management, 6) waste management, 7) non-stormwater management, 8) water conservation, 9) tracking controls and 10) illicit connection, illegal discharge detection and reporting. The Permittee must report to the State representative when discharges enter into receiving waters, adjacent property, drainage systems or when discharges could be a cause or a threat for water pollution. The Permittee must also control illicit discharges or illegal dumping prior to start of daily work schedule. Copies of written notices or orders from the Regional Water Quality Control Board or other regulatory agency must be provided to the State representative within 48 hours of reported activity. For additional information on stormwater compliance, visit the State Water Resources Control Boards storm water Website at:

http://www.waterboards.ca.gov/water_issues/programs/stormwater
3. **RESPONSIBILITY FOR DEBRIS REMOVAL:** The Permittee must be responsible for preventing sediment, trash, debris, and other construction waste from entering the street, the storm drains, local creeks, or any other bodies of water.
4. **SPOILS AND RESIDUE:** The Permittee must vacuum any saw-cut concrete waste material, debris, residue, etc. No spoils, debris, residue, etc. must be washed into a drainage system.
5. **SWEEPING:** Sweep paved roads at construction entrance and exit locations and surrounding paved areas daily within the job site during: 1) clearing and grubbing, 2) earthwork, 3) trenching, 4) soil disturbance, 5) pavement grinding and/or cutting, and 6) after observing tracking of material onto or off the State property. Keep dust to a minimum during sweeping activities. Use vacuum whenever dust generation is excessive or sediment pickup is ineffective. Roadways or work areas must not be washed down with water. Street sweeping operations must conform to Section 13 Water Pollution Control of Caltrans' Standard Specifications.
6. **VEHICLES AND EQUIPMENT:** Permittee must prevent all vehicles, equipment, etc. from leakage or mud tracking onto roadways. If leaks cannot be repaired immediately, remove the vehicle or equipment from the job site.
7. **MAINTENANCE AND FUELING OF VEHICLES AND EQUIPMENT:** Maintenance and fueling of equipment must not result in any pollution at the job site. The Permittee must immediately clean up spills/leaks, and properly dispose of contaminated soil and materials.
8. **CLEANING VEHICLES AND EQUIPMENT:** Limit vehicle and equipment cleaning or washing at the job site except what is necessary to control vehicle tracking or hazardous waste. The Permittee must clean all equipment within a bermed area or over a drip pan large enough to prevent run-off. No soaps, solvents, degreasers, etc. must be used in State right-of-way. Any water from this operation must be collected and disposed of at an appropriate site. Containment berms or dikes must be used for fueling, washing, maintaining and washing vehicles or equipment in outside areas. Containment must be performed at least 100 feet from concentrated flows of storm water, drainage courses, and storm drain inlets if within a flood plain, otherwise at least 50 feet if outside the floodplain. Keep adequate quantities of absorbent spill- cleanup material and spill kits in the fueling or maintenance area and on fueling trucks.
9. **DIESEL FUELS:** The use of diesel fuel from petroleum or other fossil fuel as a form-oil or solvent is not allowed.
10. **WEATHER CONDITIONS AT WORKSITE:** Any activity that would generate fine particles or dust that could be transported off site by stormwater must be performed during dry weather.
11. **WIND EROSION PROTECTION:** The use of Wind Erosion BMPs must be deployed year-round in instances where dust or fine particles could be transported off site.
12. **HOT MIX ASPHALT:** Runoff from washing hot mix asphalt must not enter into any drainage conveyances.
13. **PROTECTION OF DRAINAGE FACILITIES:** The Permittee must protect/cover gutters, ditches, drainage courses, and inlets with gravel bags, fiber rolls, State approved fabric filters, etc., to the satisfaction of the State representative during grading, paving, saw-cutting, etc. and materials must conform to Section 13-6.02 Materials for Water Pollution Control of Caltrans' Standard Specifications. No such protection measures must cause an obstruction to the traveling public. The Permittee must implement spill and leak prevention procedures for chemicals and hazardous substances stored on the job site (including secondary containment requirements) in accordance to section 13-4.03B Spill Prevention and Control, and 14-11 Hazardous Waste and Contamination, Water Pollution Control of Caltrans' Standard Specifications.
14. **PAINT:** Rinsing of painting equipment and materials is not permitted in State right-of-way. When thoroughly dry, dispose of

the following as solid waste: dry latex paint, paint cans, used brushes, rags, gloves, absorbent materials, and drop cloths. Oil based paint sludge and unusable thinner must be disposed of at an approved hazardous waste site.

15. **CONSTRUCTION MATERIALS:** Stockpile of all construction materials, including, but not limited to; pressure treated wood, asphalt concrete, cold mix asphalt concrete, concrete, grout, cement containing premixes, and mortar, must conform to section 13-4.03C (2) Material Storage & 13-4.03C (3) Stockpile Management of Caltrans' Standard Specifications.
16. **CONCRETE EQUIPMENT:** Concrete equipment must be washed in a designated washing area in a way that does not contaminate soil, receiving waters, or storm drain systems.
17. **EXISTING VEGETATION:** Established existing vegetation is the best form of erosion control. Minimize disturbance to existing vegetation. Damaged or removed vegetation must be replaced as directed by the State Representative.
18. **SOIL DISTURBANCE:** Soil disturbing activities must be avoided during the wet weather season. If construction activities during wet weather are allowed in your permit, all necessary erosion control and soil stabilization measures must be implemented in advance of soil disturbing activity.
19. **SLOPE STABILIZATION AND SEDIMENT CONTROL:** Consider a certified expert in Erosion and Sediment control in cases where slopes are disturbed during construction. The Permittee is directed to comply with Section 13.5 Temporary Soil Stabilization and Section 21 Erosion Control of Caltrans' Standard Specifications during application of temporary soil stabilization measures to the soil surface. Fiber rolls or silt fences may be required down slope until permanent soil stabilization is established. Remove the accumulated sediment whenever the sediment accumulates to 1/3 of the linear sediment barrier height. The Permittee must limit the use of plastic materials when more sustainable, environmentally friendly alternatives exist or when environmental regulations prohibit their use within the project.
20. **STOCKPILES:** Stockpiles containing aggregate and/or soil must be stored at least 100 feet from concentrated flows of storm water, drainage courses, and storm drain inlets if within a flood plain, otherwise at least 50 feet if outside the floodplain, and must be covered and protected with a temporary perimeter sediment barrier. Cold mix stockpiles must be stored on an impermeable surface and covered with 9 mil plastic to prevent contact with water. Minimize stockpiling of materials on the job site. Manage stockpiles by implementing the water pollution control practices in Section 13-4.03C (3) Stockpile Management of the State of California standard specifications for construction.
21. **DISCOVERY OF CONTAMINATION:** The State Representative must be notified in case any unusual discoloration, odor, or texture of ground water, is found in excavated material or if abandoned, underground tanks, pipes, or buried debris are encountered.
22. **SANITARY AND SEPTIC WASTE:** Do not bury or discharge wastewater from a sanitary or septic system within the highway. Properly connected sewer facilities are free from leaks. With State Representative approval place portable sanitary facility at least 50 feet away from storm drains, receiving waters, and flow lines. Permittee must comply with local health agency provisions when

using an on-site disposal system.

23. **LIQUID WASTE:** Prevent job site liquid waste from entering storm drain systems and receiving waters. Drilling slurries, grease or oil-free waste water or rinse water, dredging, wash water or rinse water running off a surface or other non-storm water liquids not covered under separate waste water permits must be held in structurally sound, leak-proof containers, such as portable bins or portable tanks. Store containers at least 50 feet away from moving vehicles and equipment. Liquid waste may require testing to determine hazardous material content prior to disposal. All measures must conform to section 13-4.03D (5) Liquid Waste, Water Pollution Control of Caltrans' Standard Specifications.
24. **WATER CONTROL AND CONSERVATION:** Manage water use in a way that will prevent erosion and the discharge of pollutants into storm drain systems and receiving waters. Direct runoff, including water from water line repair from the job site to areas where it can infiltrate into the ground. Direct water from off-site sources around the job site or from contact with jobsite runoff.
25. **PILE DRIVING:** Keep spill kits and cleanup materials at pile driving locations. Park pile driving equipment over drip pans, absorbent pads, or plastic sheeting with absorbent material, and away from stormwater run-on when not in use.
26. **DEWATERING:** Dewatering consists of discharging accumulated storm water, groundwater, or surface water from excavations or temporary containment facilities. All dewatering operations must comply with the latest Caltrans guidelines including the Field Guide for Construction Site Dewatering. Contact State representative for approval of dewatering discharge by infiltration or evaporation, otherwise, any effluent discharged into a permitted storm water system requires approval from the Regional Water Quality Control Board. Prior to the start of dewatering, the Permittee must provide the State Representative with a dewatering and discharge work plan that complies with section 13-4.03G Dewatering, Water Pollution Control of Caltrans' Standard Specifications. A copy of the Waste Discharge Permit and a copy of a valid WDID number issued by the Regional Board must be provided to the State representative.

NOTICE OF COMPLETION
TR-0128 (REV 06/01) CT #7541-5529-1

PERMIT NO. 11-22-NCS-0067

11-SD-905/3.63

Dear Sir or Madam:

*All work authorized by the above-numbered permit was
completed on* _____
DATE

SIGNATURE OF PERMITTEE

ADA Notice For individuals with sensory disabilities, this document is available in alternate formats. For information call (916) 654-6410 or TDD (916) 654-3880 or write Records and Forms Management, 1120 N Street, MS-89, Sacramento, CA 95814.

FM 92 1546 M

NOTICE OF COMPLETION
TR-0128 (REV 06/01) CT #7541-5529-1

PERMIT NO. 11-22-NCS-0067

11-SD-905/3.63

Dear Sir or Madam:

*All work authorized by the above-numbered permit was
completed on* _____
DATE

SIGNATURE OF PERMITTEE

ADA Notice For individuals with sensory disabilities, this document is available in alternate formats. For information call (916) 654-6410 or TDD (916) 654-3880 or write Records and Forms Management, 1120 N Street, MS-89, Sacramento, CA 95814.

FM 92 1546 M

NOTICE OF COMPLETION
TR-0128 (REV 06/01) CT #7541-5529-1

PERMIT NO. 11-22-NCS-0067

11-SD-905/3.63

Dear Sir or Madam:

*All work authorized by the above-numbered permit was
completed on* _____
DATE

SIGNATURE OF PERMITTEE

ADA Notice For individuals with sensory disabilities, this document is available in alternate formats. For information call (916) 654-6410 or TDD (916) 654-3880 or write Records and Forms Management, 1120 N Street, MS-89, Sacramento, CA 95814.

FM 92 1546 M

NOTICE OF COMPLETION
TR-0128 (REV 06/01) CT #7541-5529-1

PERMIT NO. 11-22-NCS-0067

11-SD-905/3.63

Dear Sir or Madam:

*All work authorized by the above-numbered permit was
completed on* _____
DATE

SIGNATURE OF PERMITTEE

ADA Notice For individuals with sensory disabilities, this document is available in alternate formats. For information call (916) 654-6410 or TDD (916) 654-3880 or write Records and Forms Management, 1120 N Street, MS-89, Sacramento, CA 95814.

FM 92 1546 M

CUSTOMER SERVICE QUESTIONNAIRE

TR-0164 (REV 2/2001)

PERMIT NUMBER

11-22-NCS-0067

Dear Customer,

Our goal is to provide the best service possible to our customers. Please take a few minutes to complete this questionnaire. Your comments will enable us to see how we are doing overall and any areas which may need improvement.

PLEASE TELL US HOW WE'RE DOING

INSIDE THE OFFICE	EXCELLENT	VERY GOOD	GOOD	POOR
Staff courteous and helpful	<input type="checkbox"/>	<input type="checkbox"/>	<input type="checkbox"/>	<input type="checkbox"/>
Staff quick and efficient	<input type="checkbox"/>	<input type="checkbox"/>	<input type="checkbox"/>	<input type="checkbox"/>
Explanations and instructions clear	<input type="checkbox"/>	<input type="checkbox"/>	<input type="checkbox"/>	<input type="checkbox"/>
TELEPHONE ANSWERING				
Timely response	<input type="checkbox"/>	<input type="checkbox"/>	<input type="checkbox"/>	<input type="checkbox"/>
Receiving information or answers	<input type="checkbox"/>	<input type="checkbox"/>	<input type="checkbox"/>	<input type="checkbox"/>
INSPECTION				
Inspector courteous and helpful	<input type="checkbox"/>	<input type="checkbox"/>	<input type="checkbox"/>	<input type="checkbox"/>
Pre-construction meeting set and held in a timely manner	<input type="checkbox"/>	<input type="checkbox"/>	<input type="checkbox"/>	<input type="checkbox"/>
Inspector at job site frequently	<input type="checkbox"/>	<input type="checkbox"/>	<input type="checkbox"/>	<input type="checkbox"/>
Inspector able to answer questions and deal with problems	<input type="checkbox"/>	<input type="checkbox"/>	<input type="checkbox"/>	<input type="checkbox"/>
OVERALL PERFORMANCE				
What would you say is our overall performance?	<input type="checkbox"/>	<input type="checkbox"/>	<input type="checkbox"/>	<input type="checkbox"/>
Is there a staff person you would like to commend?	STAFF'S NAME:			

COMMENTS:

NAME (Optional)

BUSINESS PHONE NUMBER

DATE

ADA Notice

For individuals with sensory disabilities, this document is available in alternate formats. For alternate format information, contact the Forms Management Unit at (916) 445-1233, TTY 711, or write to Records and Forms Management, 1120 N Street, MS-89, Sacramento, CA 95814.